

# TV006-SideCabinet Installation Instruction

## Tips:

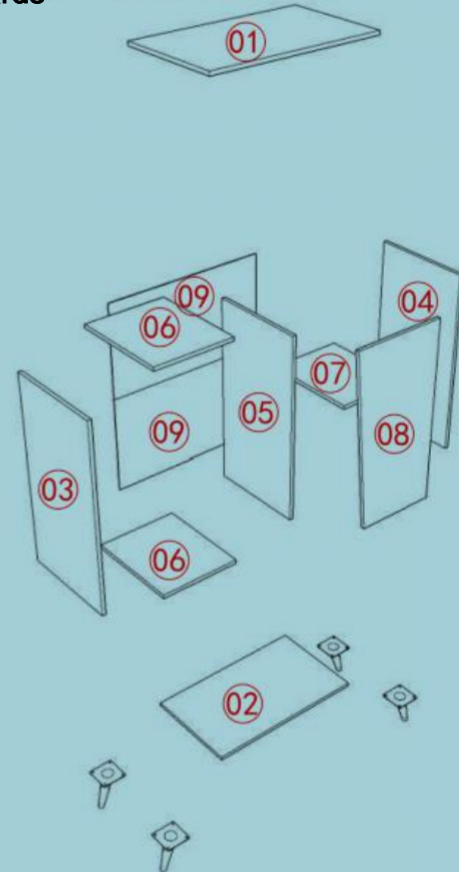
1. Lay out all parts and tools. Use the manual to find the correct screws and match boards with product labels for easy assembly.
2. Follow the manual 's order, securing each part before moving to the next step.
3. If you find extra screws after assembly, they 're spare ones for your convenience.



## Product Display



## Boards

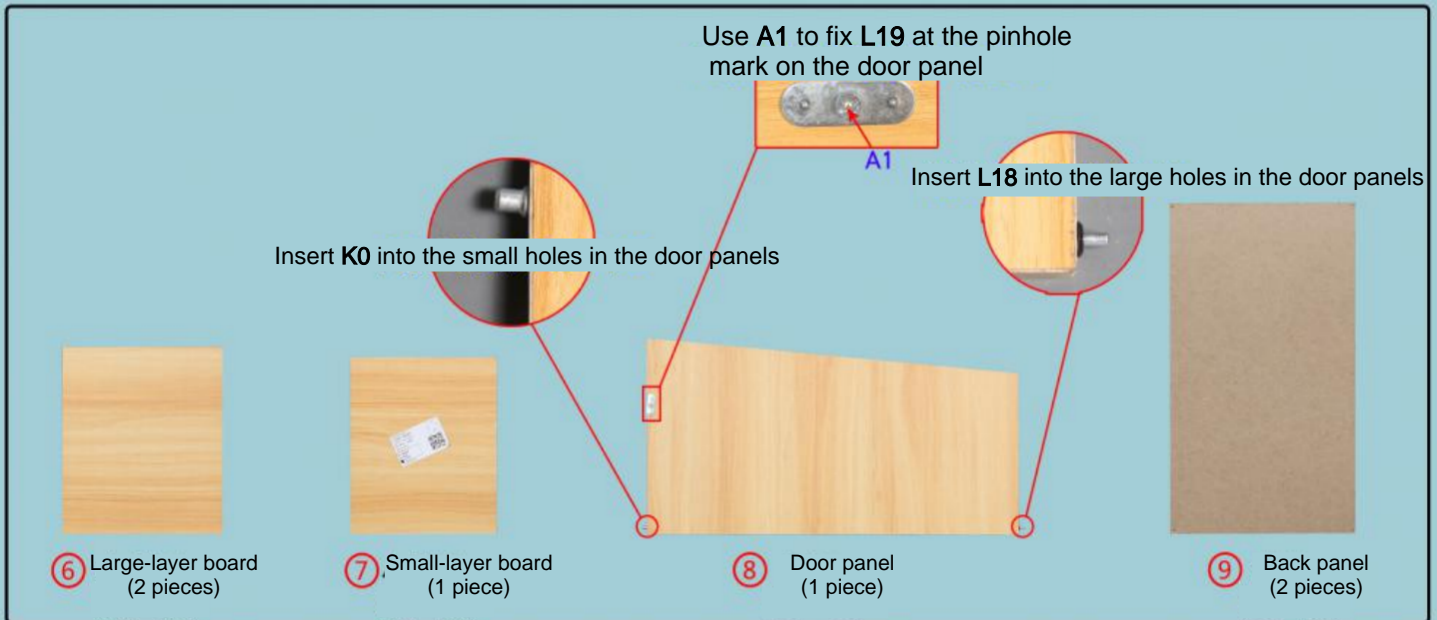
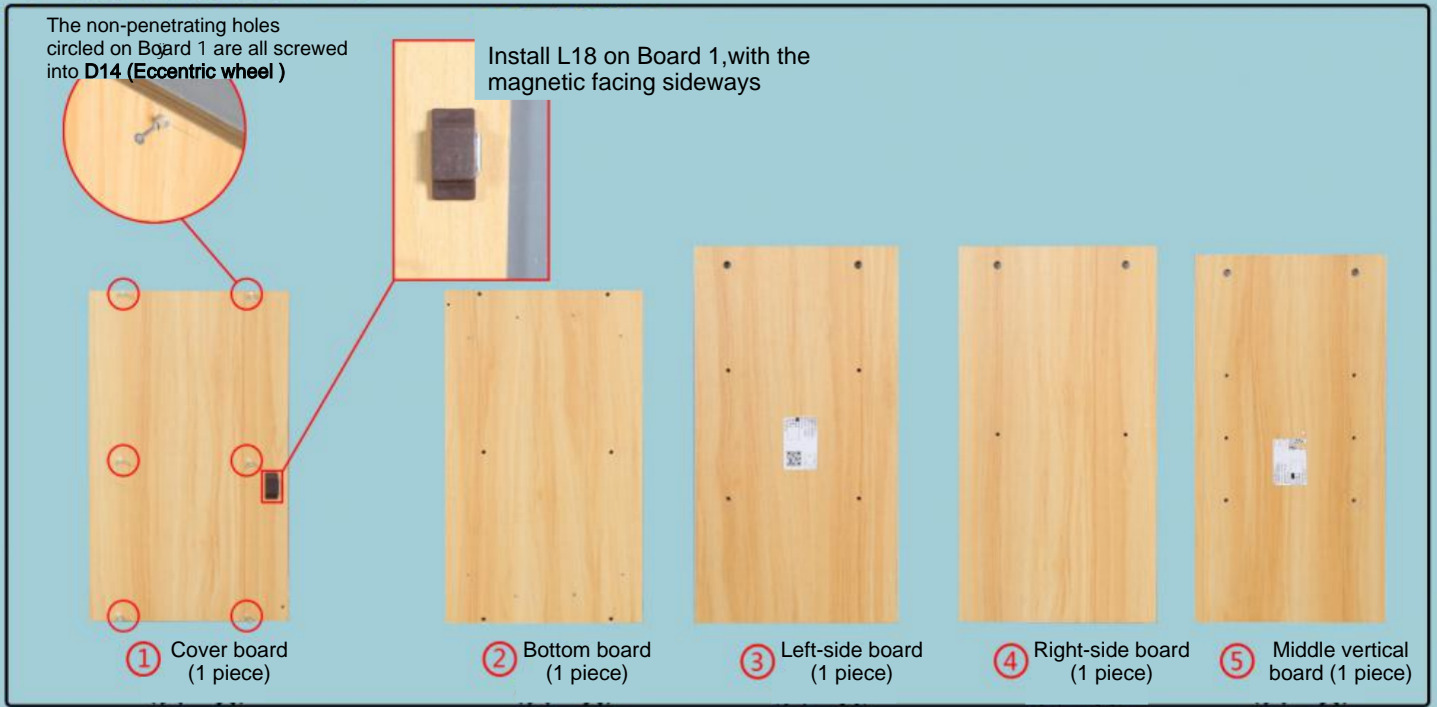


## Accessories

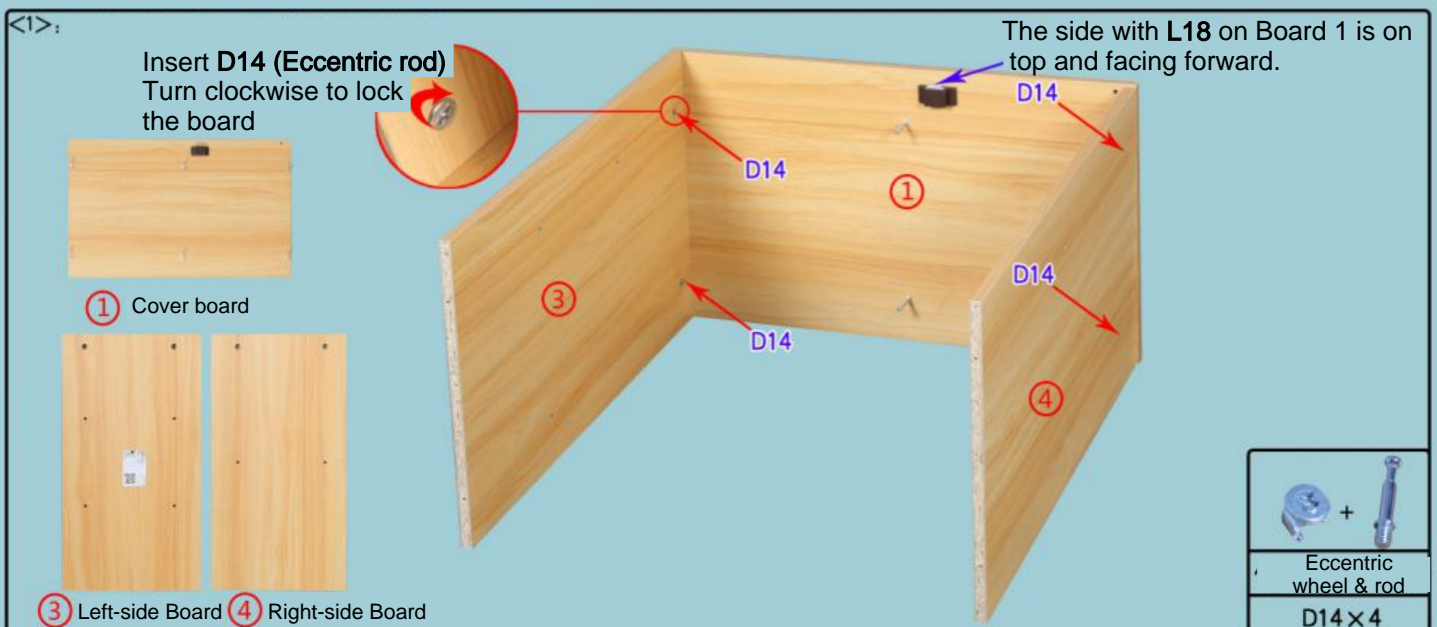
4*40 Self-tapping screw	3.5*12 Self-tapping screw	Eccentric wheel & rod	Metal shelf pin	Spring shelf pin	Screwdriver
B4 × 26	A1 × 19	D14 × 7	K0 × 2	L8 × 1	1
Nail	Embedded door stopper	Single-hole door stopper plate	Metal tripod leg		
K20 × 18	L18 × 1	L19 × 1	M40 × 4		

## Notes:

1. Use the drawings to identify the boards during installation.
2. Tighten screws about 70%, then fully tighten once assembly is complete.
3. Ensure boards with a red side face downward or inward.
4. Product color may vary; refer to the actual product, as the manual is for reference only.



## Installation Instructions



<2>:

D14

⑤

D14

⑤ Middle vertical board

D14 × 2

Eccentric wheel & rod

<3>:

B4

⑥

B4

B4

B4

B4

B4

B4

B4

⑥ Large-layer board

B4 × 8

4\*40 Self-tapping screw

<4>:

B4

⑦

B4

B4

B4

B4

⑦ Small-layer board

B4 × 4

4\*40 Self-tapping screw

<5>:

B4

B4

B4

B4

B4

B4

B4

② Bottom board

B4 × 6

4\*40 Self-tapping screw

<6>: Flip the whole thing over, so that L18 (on Board 1) is on the bottom.

①

<7>:

K20

K20

K20

K20

K20

K20

K20

K20

K20

K20

K20

⑨

⑨

⑨ Back panel

K20 × 16

Nail

Hammer K20 into the panel (use your own hammer)

<8>: Flip over with the Bottom board(2) facing up



<9>:

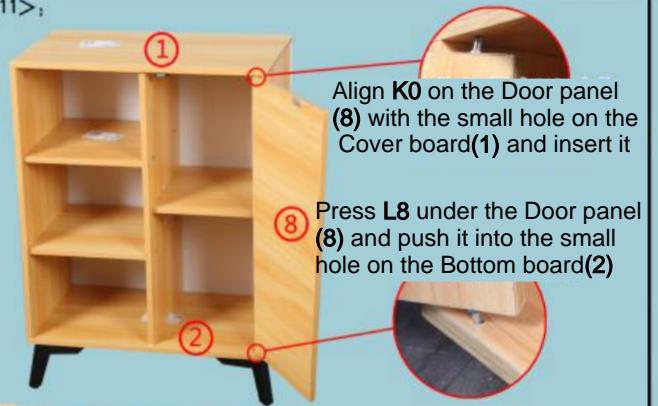




	
Metal tripod leg	3.5*12 Self-tapping screw
M40×4	A1×16

<10>: Flip and straighten it as shown



<11>:



	
Spring shelf pin	Metal shelf pin
L8×1	K0×1

<12>:



Installation Completed