

# SOCE017-120CM Installation Instruction

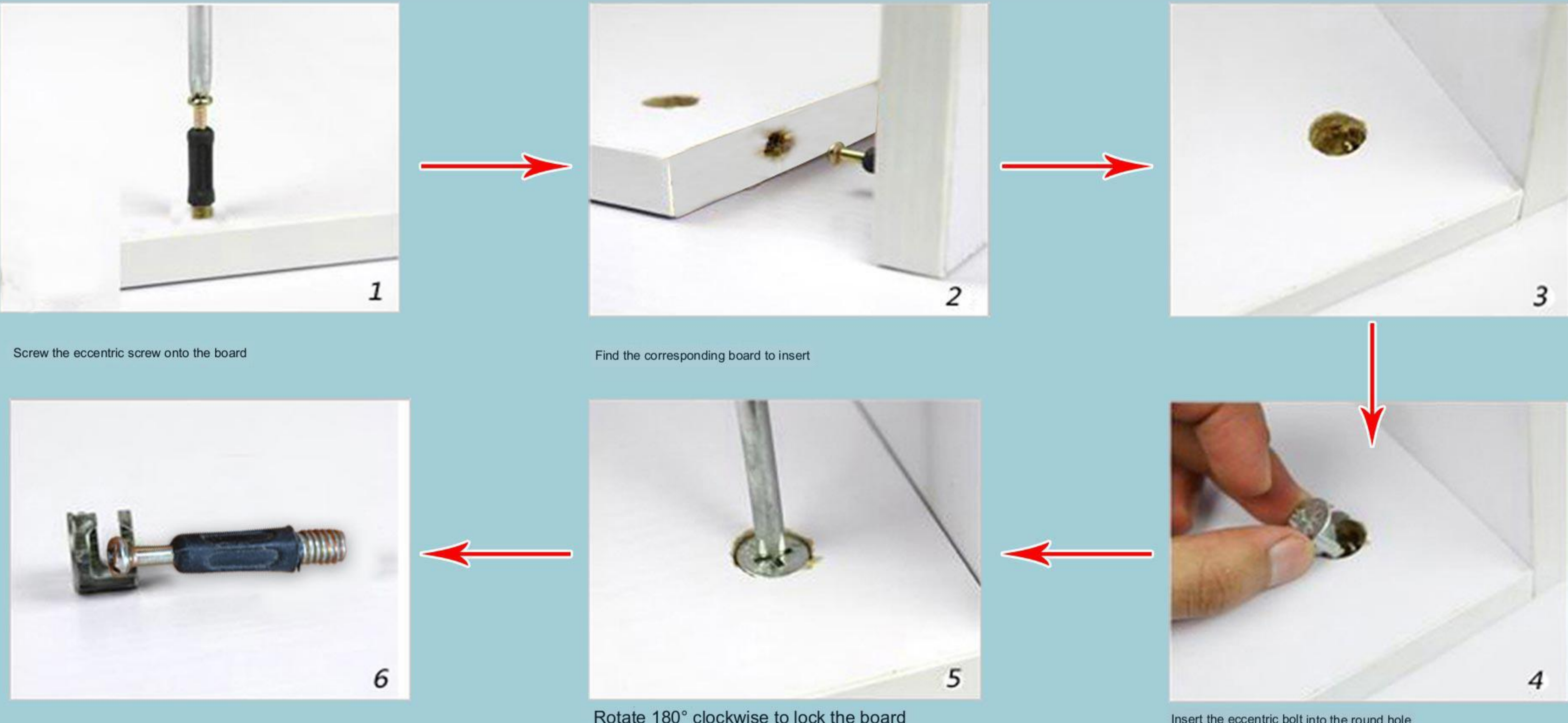
|   |   |   |   |  |   |   |   |   |
|---|---|---|---|--|---|---|---|---|
|  |  |  |  |  |  |  |  |  |
| Eccentric screw   | Eccentric Bolt  | 3.5CM self-tapping screw  | metal pin   | spring pin   | Smallest self-tapping screw   | air hole  | small nail  | 3CM flat head screw   |
| A*8   | B*8   | C*35  | D*22  | E*4  | F*16  | G*1   | H*30  | I*5   |

Kind tips:

Tighten it when you're all done!

Eccentric installation principle:

|  |  |  |
|--|--|--|
|  |  |  |
| double bouncer   | rebounder  | Iron sheets  |
| J*1  | K*2  | L*4  |



1 Screw the eccentric screw onto the board

2 Find the corresponding board to insert

3

4 Insert the eccentric bolt into the round hole

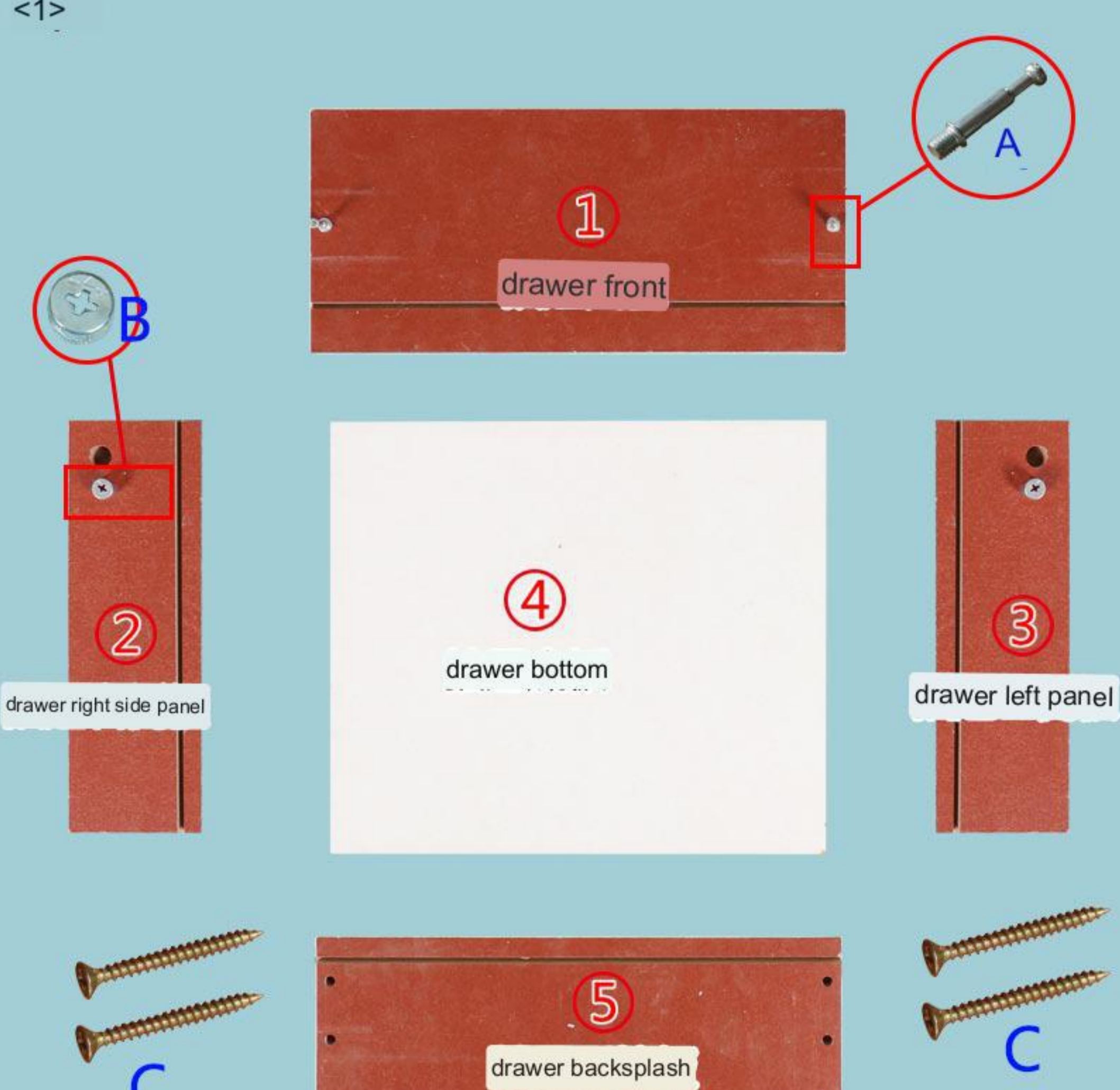
5 Rotate 180° clockwise to lock the board

6

installation steps:

Step 1: Drawer part installation

<1>



1 drawer front

2 drawer right side panel

3 drawer left panel

4 drawer bottom

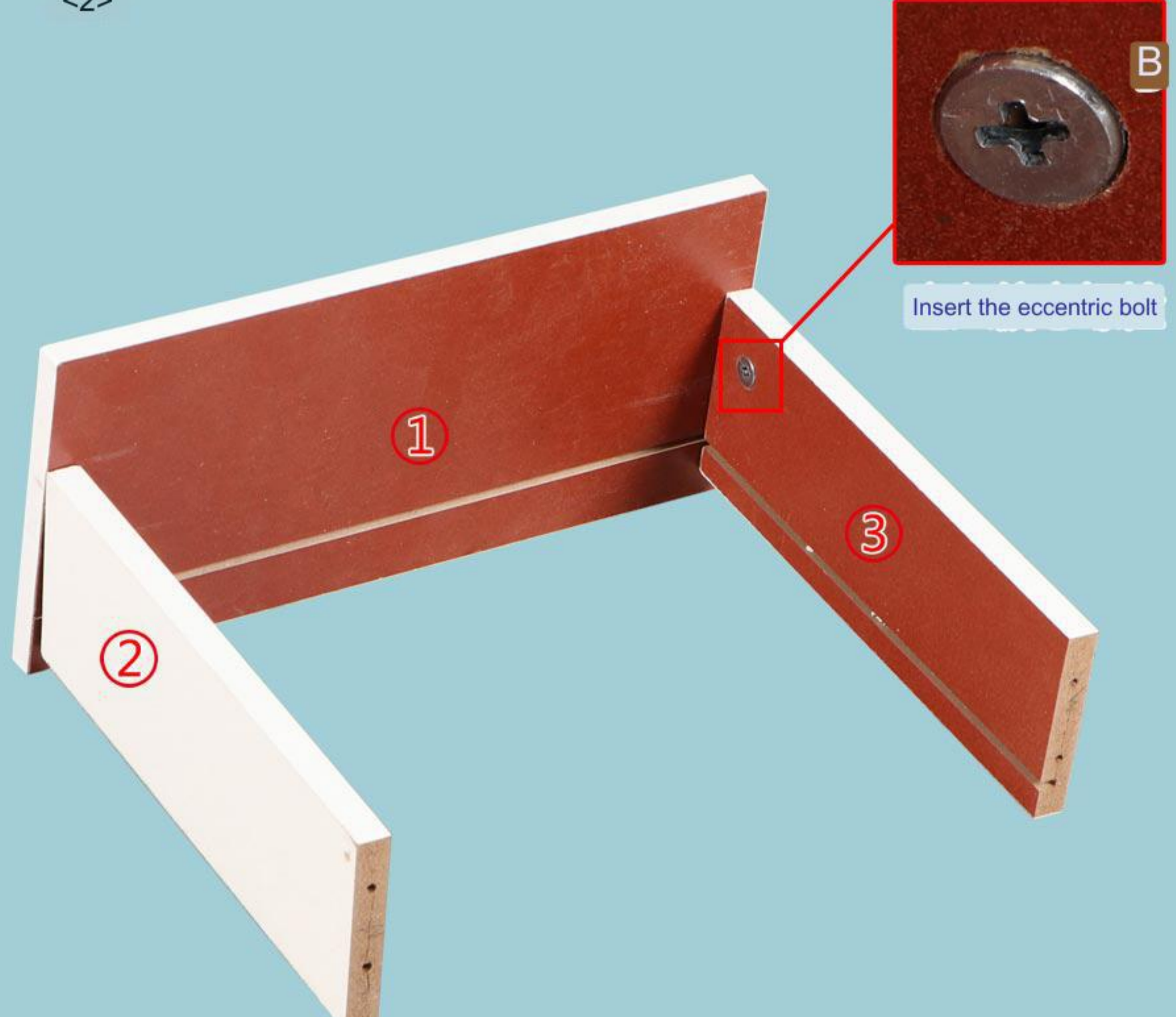
5 drawer backplash

A

B

C

<2>



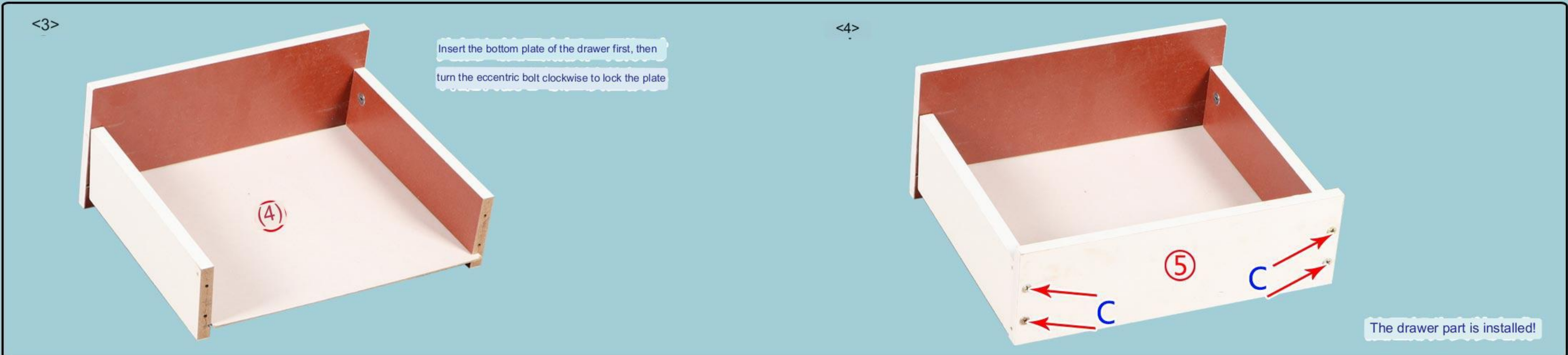
1

2

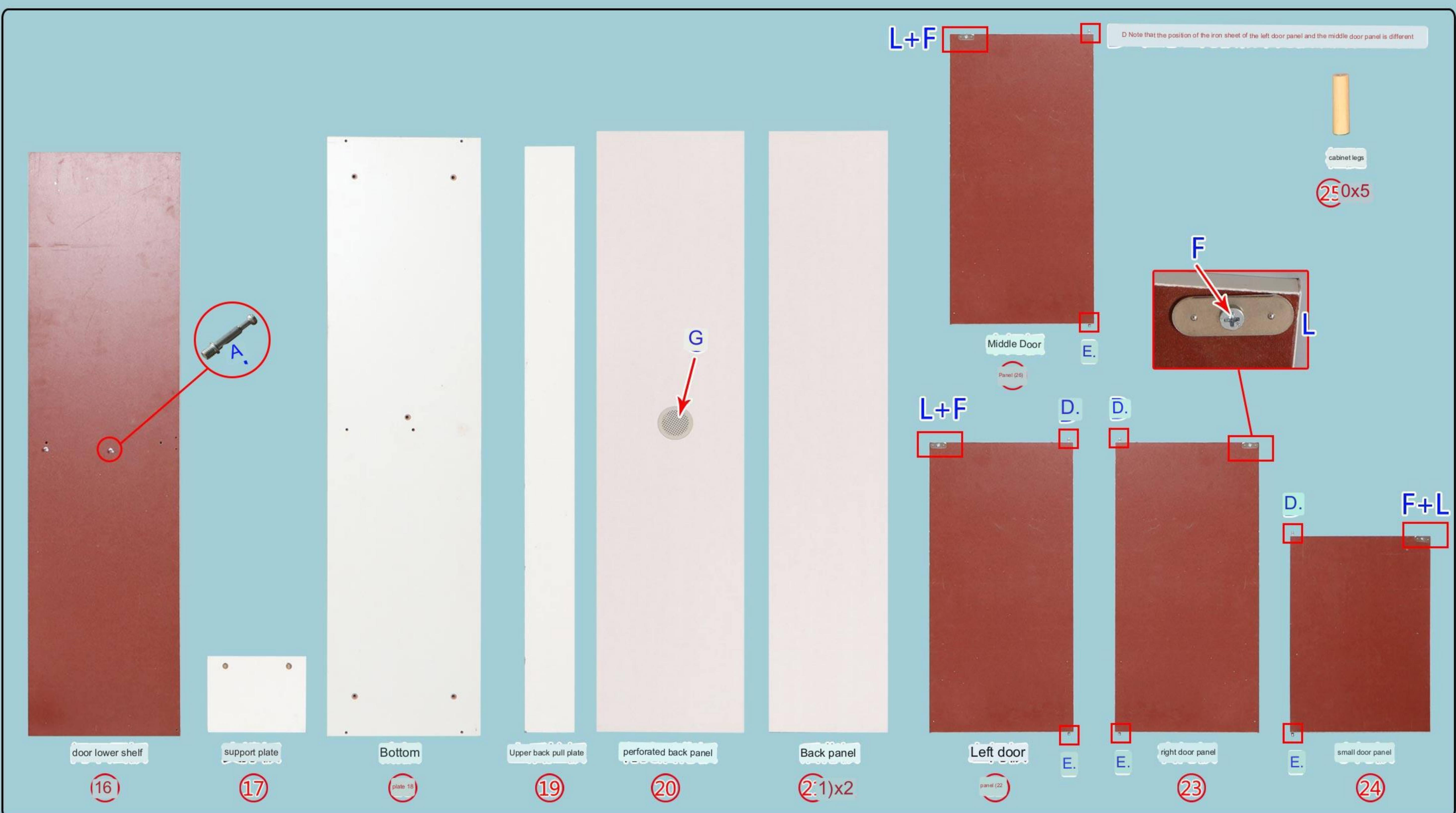
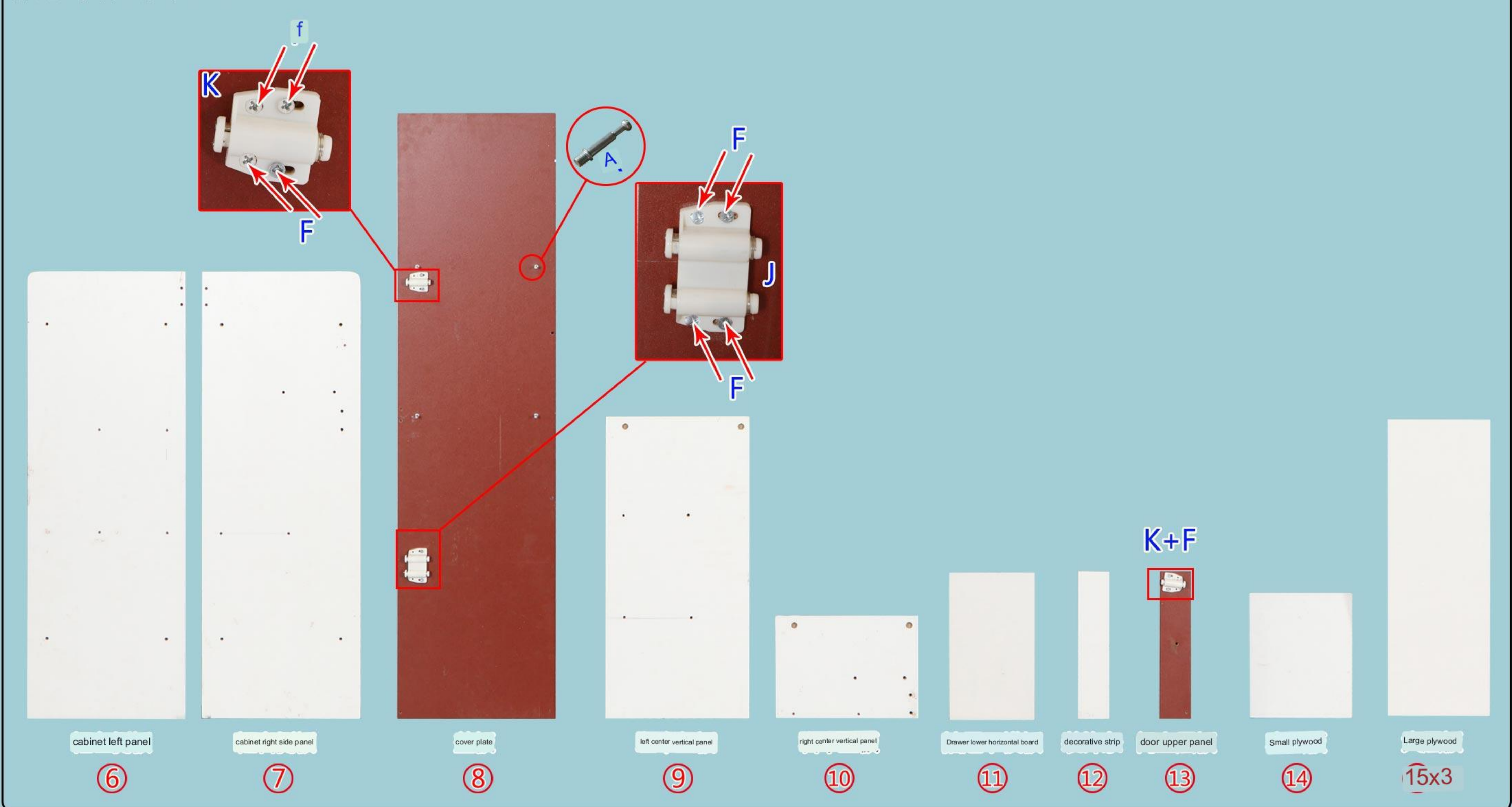
3

Insert the eccentric bolt

B

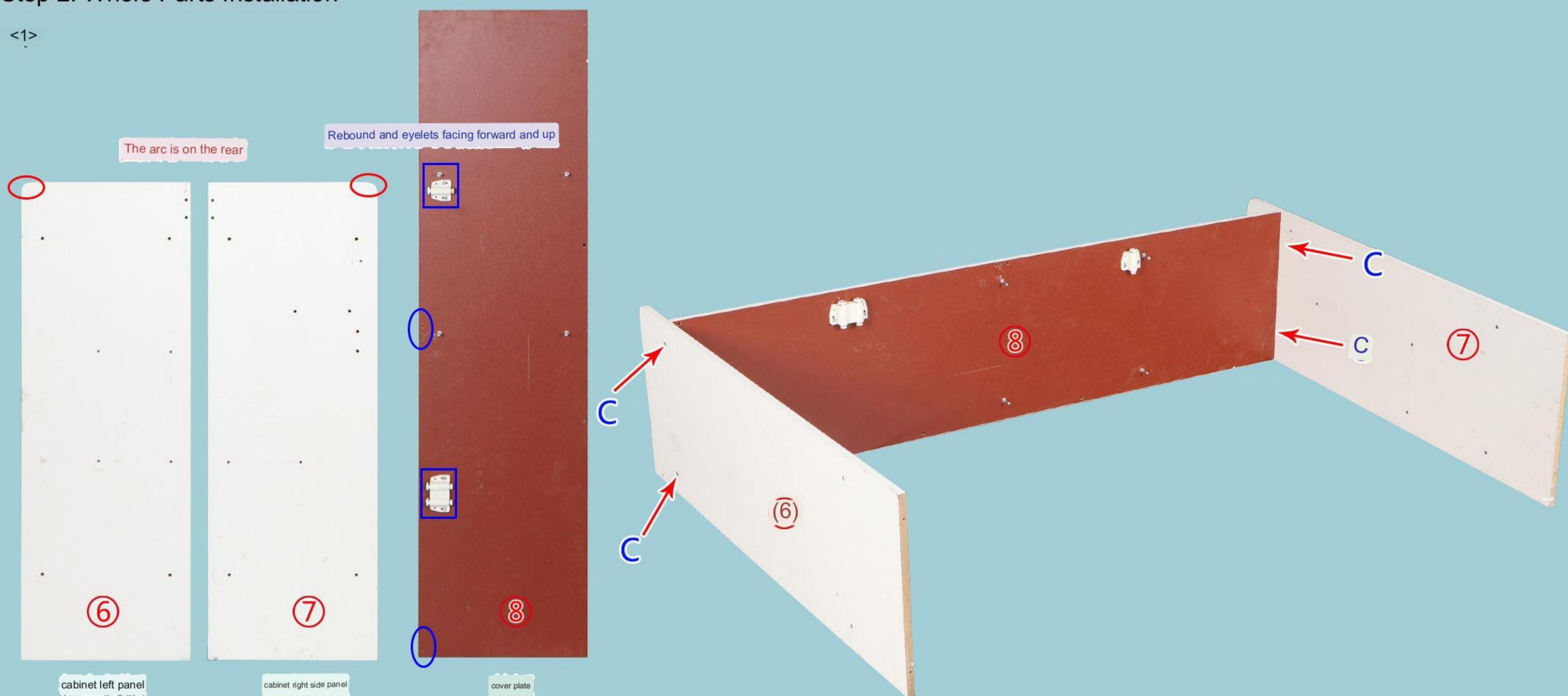


Board name and serial number:

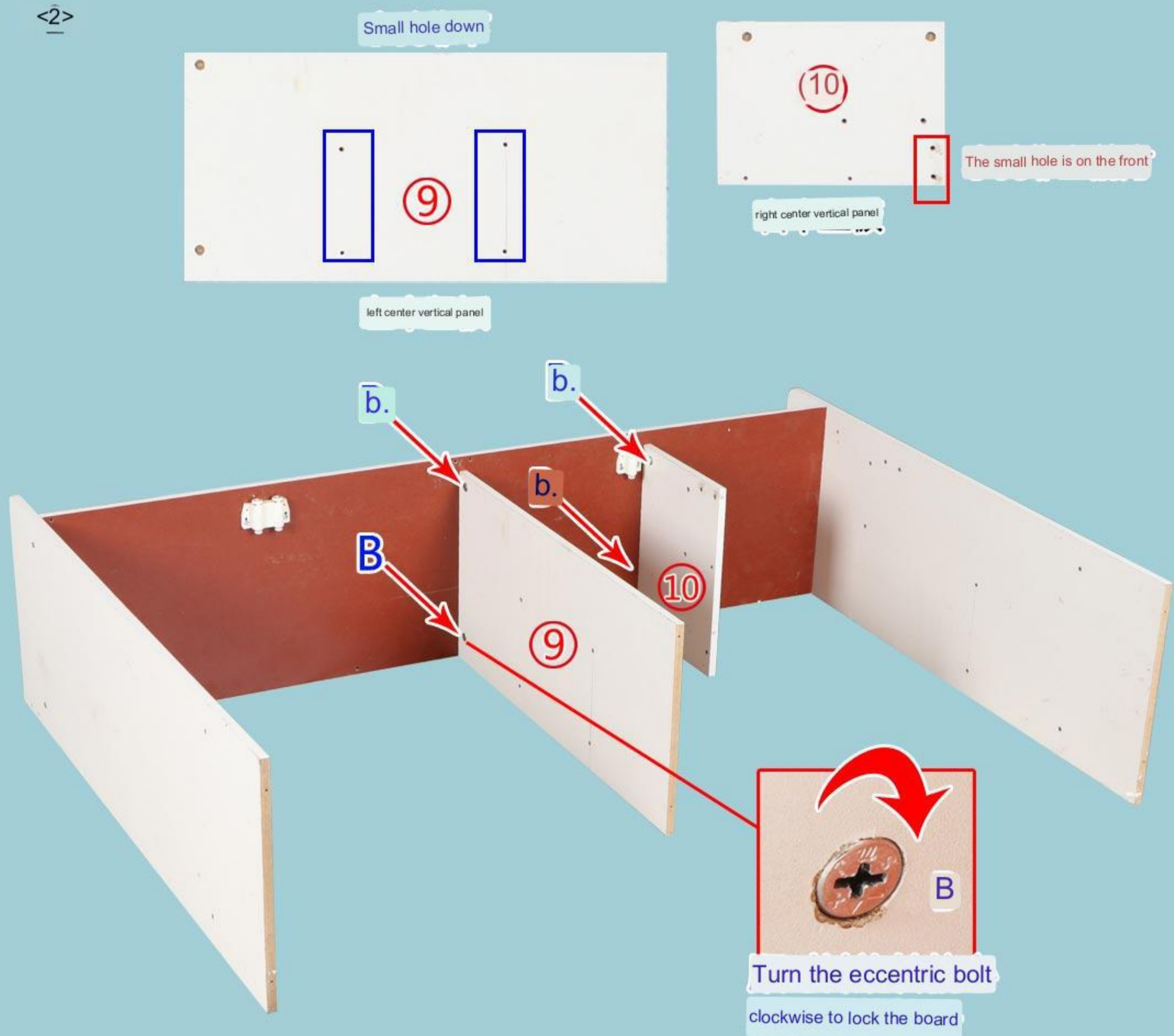


## Step 2: Whole Parts Installation

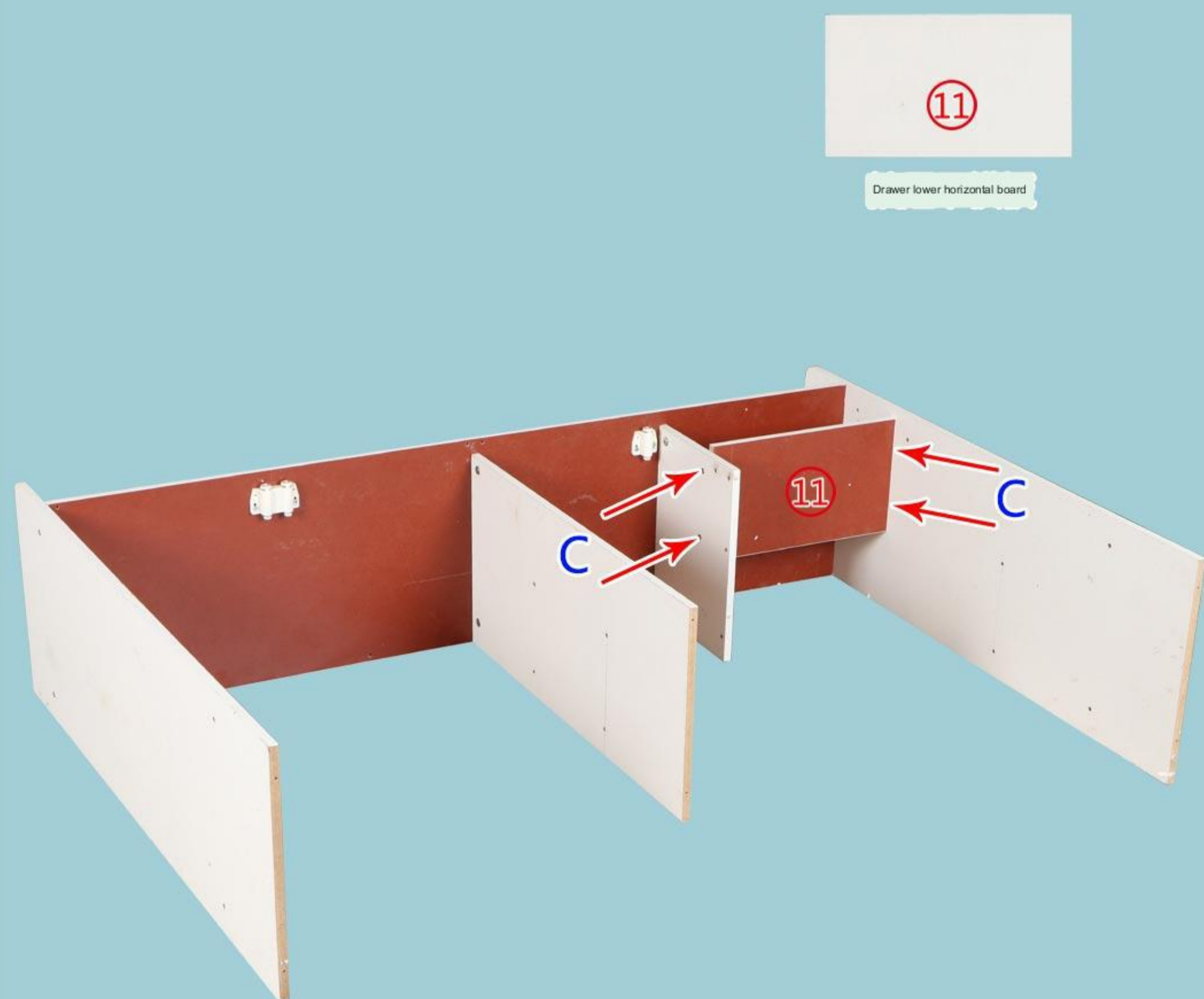
<1>



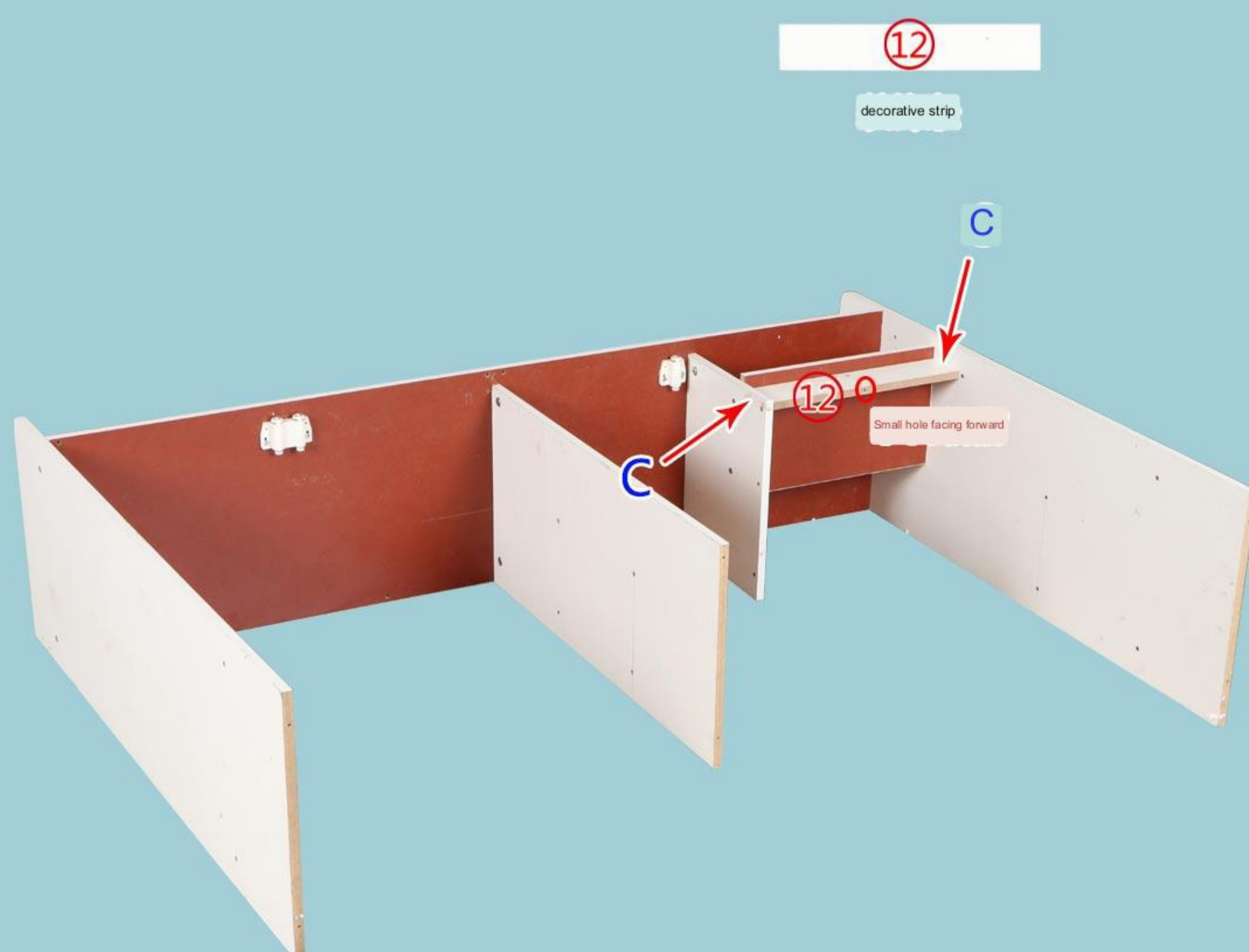
<2>



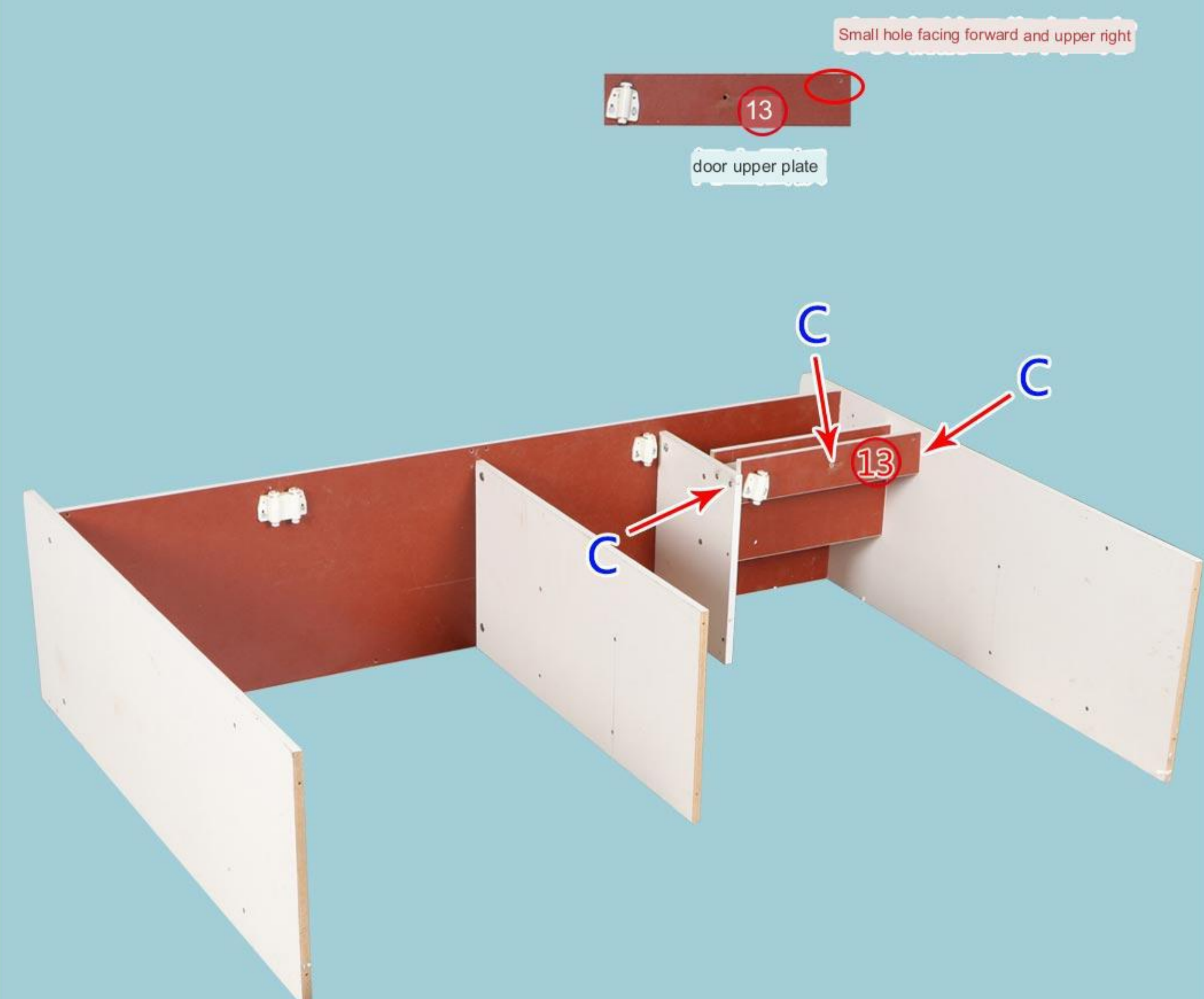
<3>

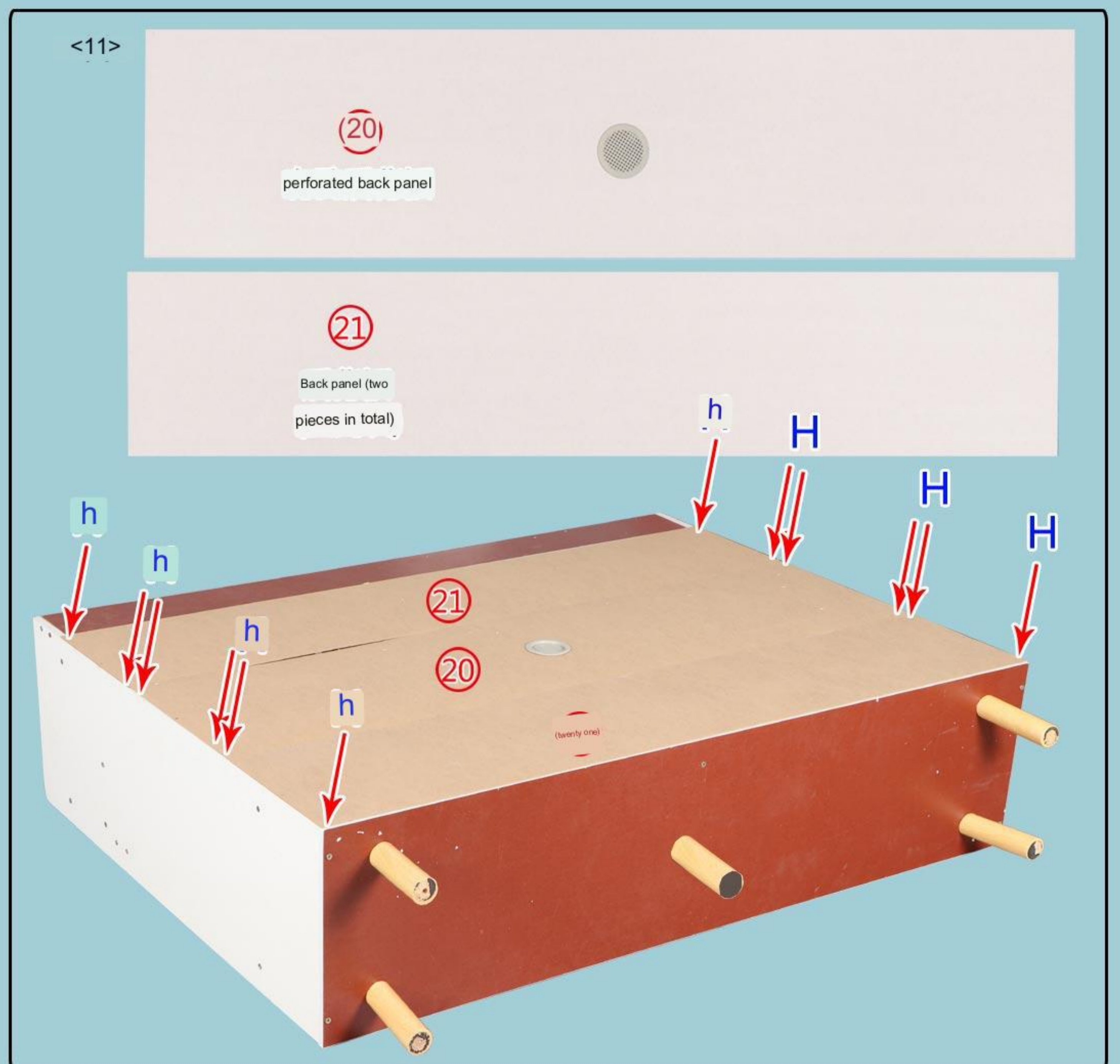
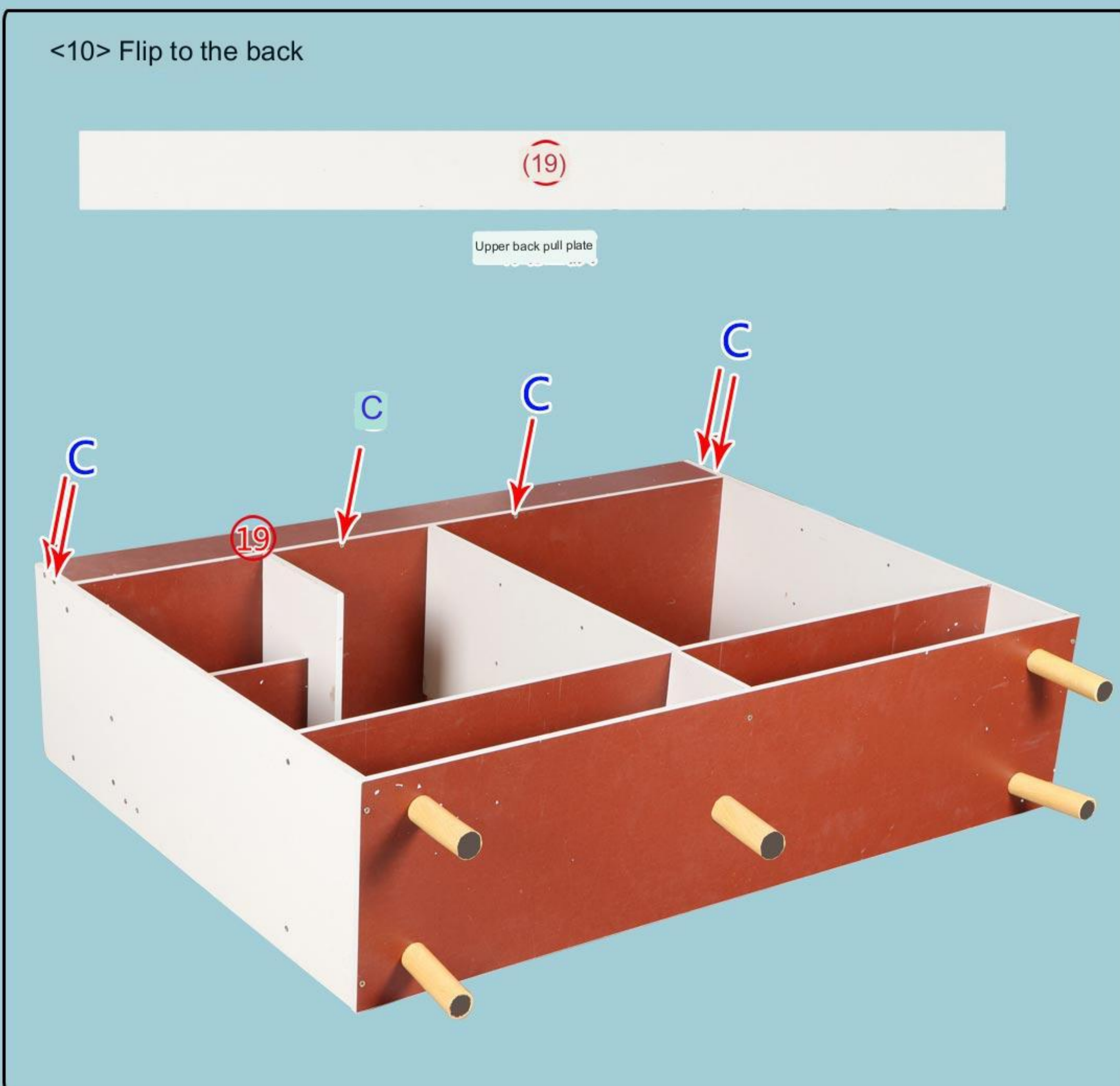
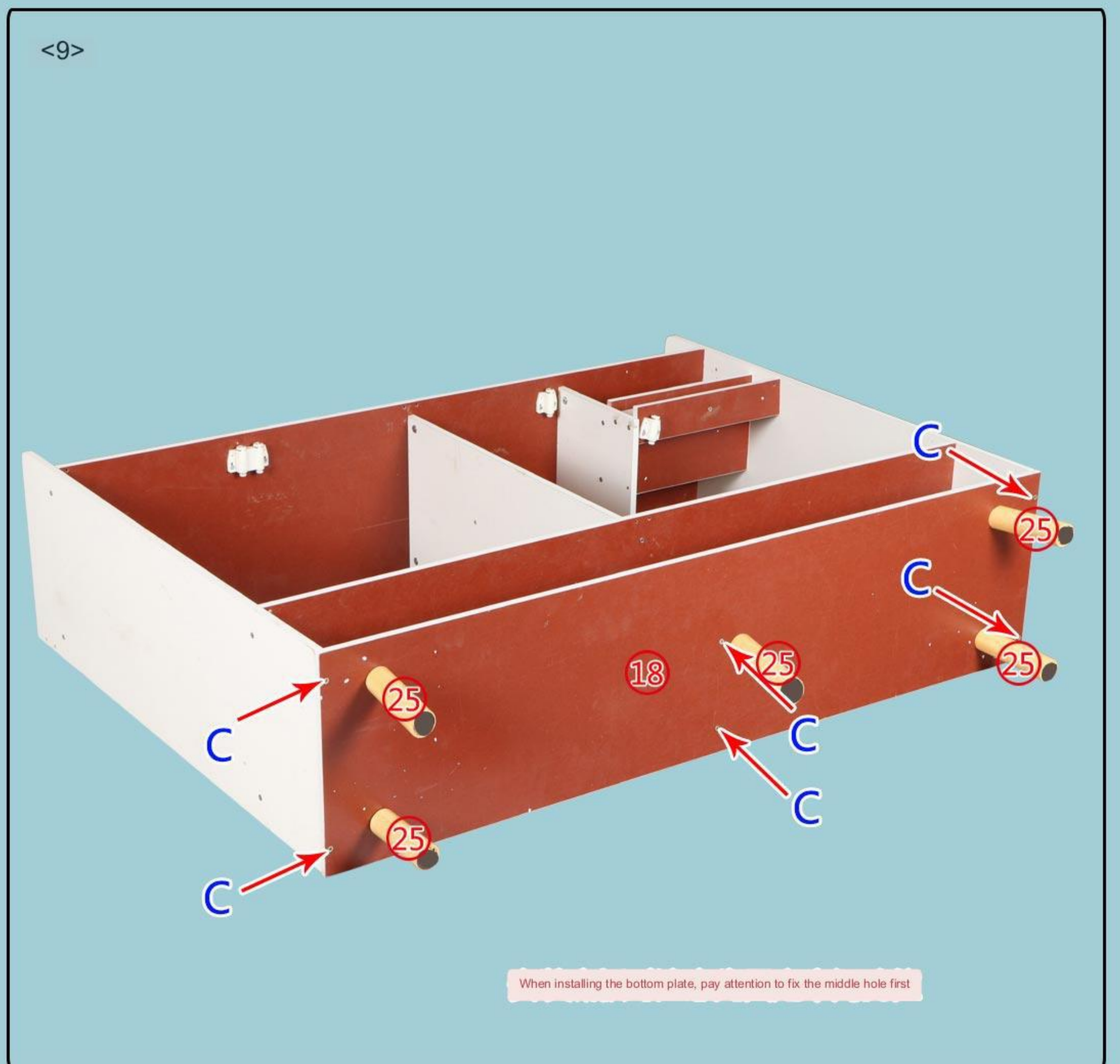
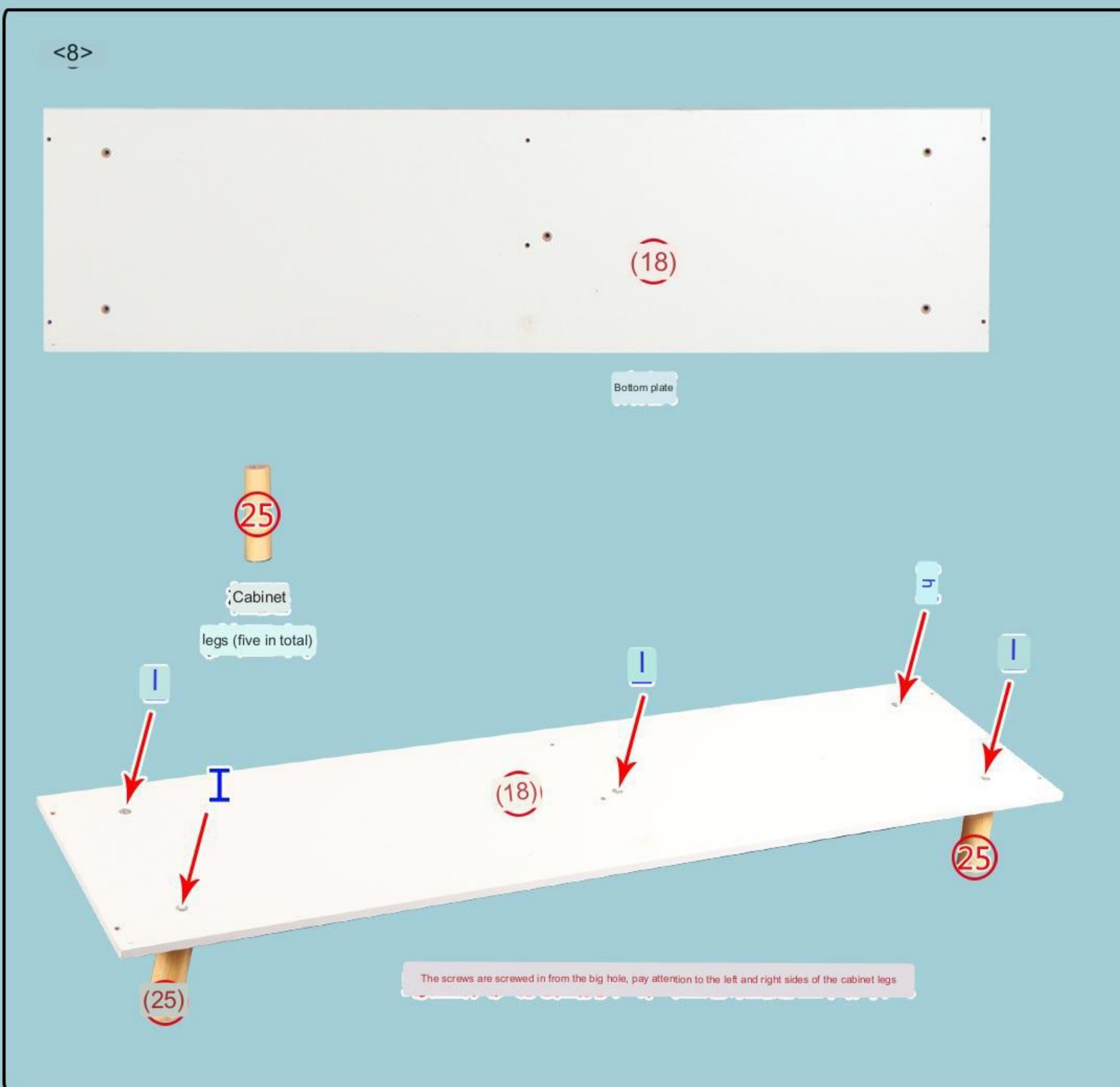
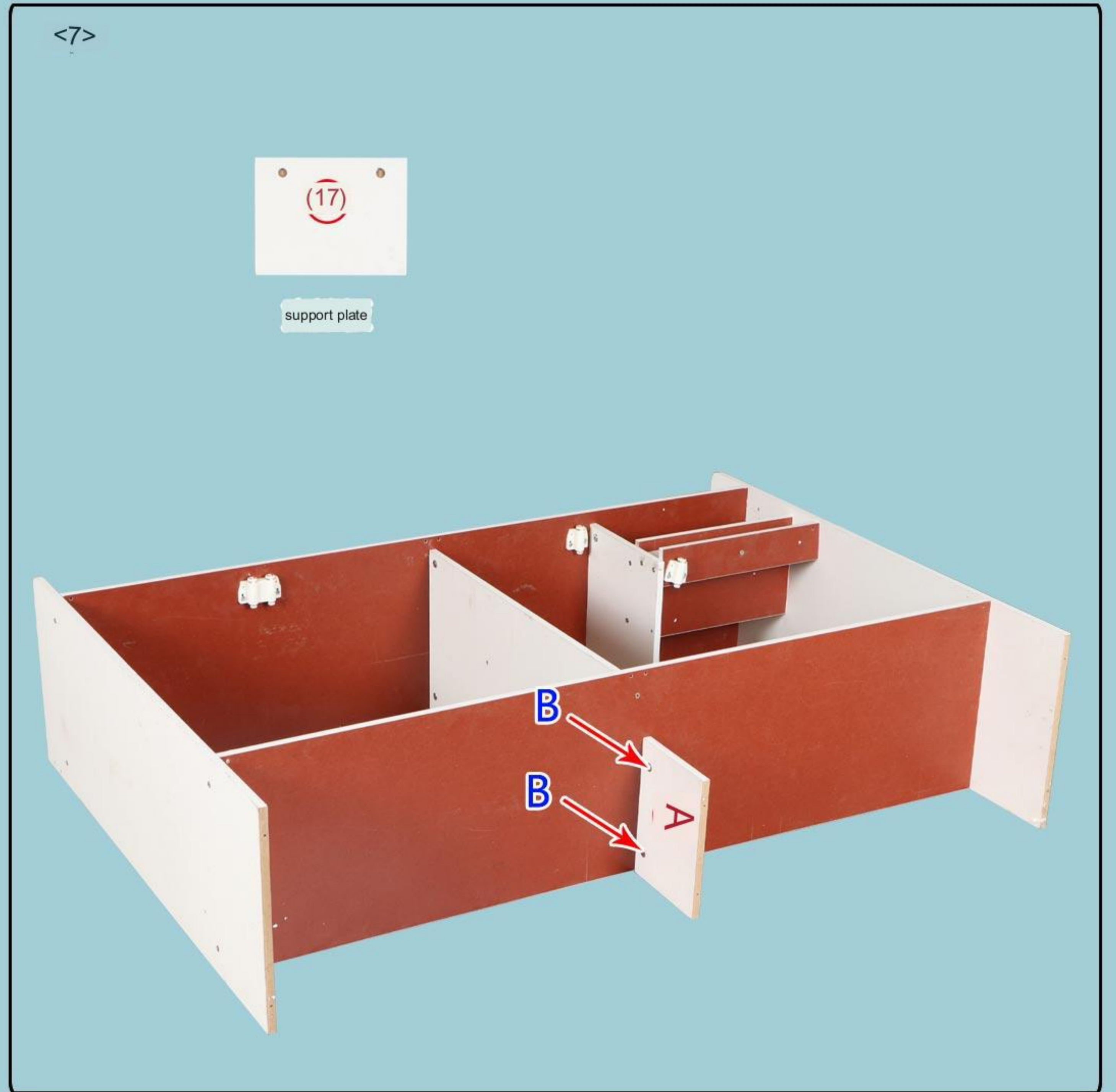
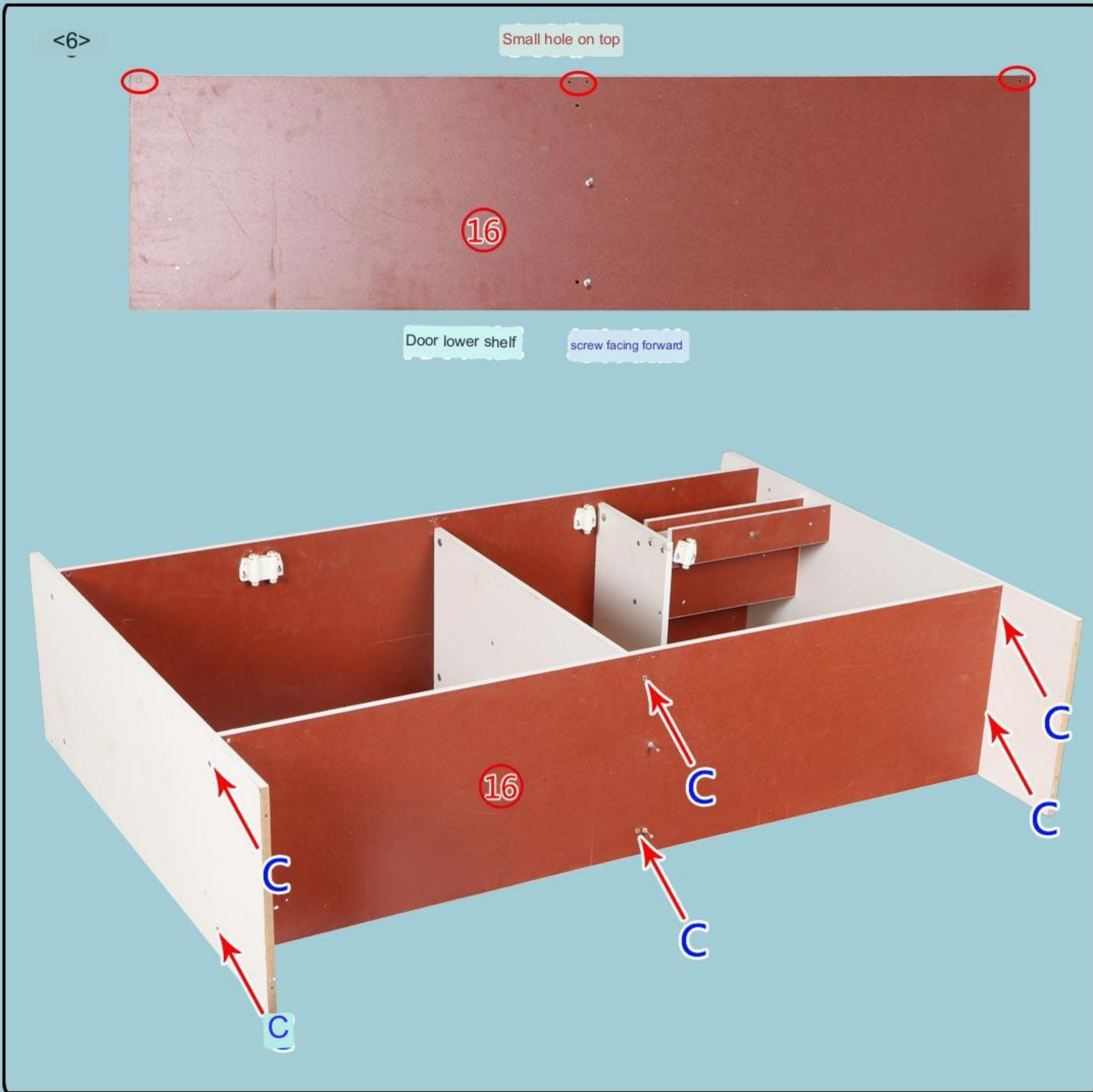


<4>



<5>





<12> The overall alignment, facing forward



<13> Put in large and small laminates



<14>

Note that the position of the iron sheet on the left door panel and the middle door panel is different



<15> Slowly push into the drawer

Method 1: Insert the metal pin after pushing in the drawer.

Method 2: After inserting the metal pin, the drawer is tilted 45 degrees

Push.

Complete drawing!

