



# SOCE012 60CM Installation Instruction

1. Product accessories and quantity (it is recommended to put more spare screws)

		
4*40 self-tapping screw	tipping gear	Three-layer plastic tipping bucket hinge
B4*22 (2 spares included)	S15*2	P9*2
		
spring shelf pin	straight arm hinge	3.5*14 self-tapping screw
L8*2	F0*2	A2*28 (including 2 spares)
		
Eccentric wheel + eccentric rod	screwdriver	
D0*3 (includes 1 spare)	1	

## Kind tips:

1. When installing, please refer to the drawings to distinguish the boards.

The color of the product is not subject to the instructions;

2. Tighten the screw seven times, and then tighten it after all is completed!

3. Some boards have a red side, and the red side faces down or inward.

4, Please read all the drawings before installation

5. If there are extra screw accessories, they are spare screws given by the manufacturer!

## 2. Hinge installation steps:

The door gap is too large



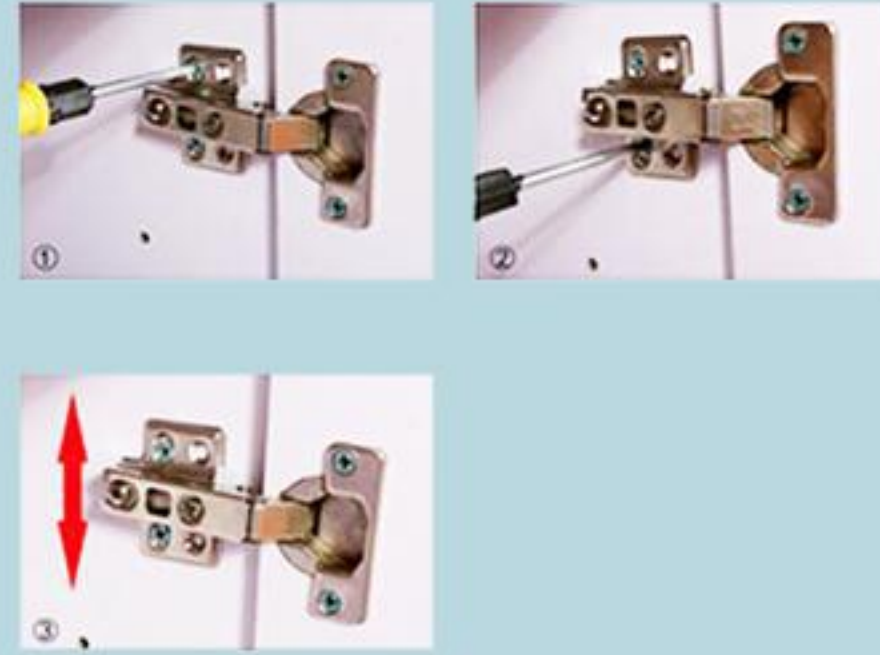
As shown in the picture, the screw pointed by the screwdriver is used to adjust the gap of the cabinet door, and the clockwise rotation is to adjust the gap of the door panel to become smaller.

The gap between the door panel and the side panel is too large



As shown in the picture, the screw pointed by the screwdriver is used to adjust the front and rear position of the door panel. First loosen the screw counterclockwise, then adjust the position of the door panel back and forth. After the position adjustment is completed, tighten the screw clockwise.

uneven door panels



As shown in the picture, the screw pointed by the screwdriver is used to fix the door panel on the side panel. First loosen the screw clockwise, then adjust the position of the door panel up and down, and then tighten the screw clockwise after adjusting the door panel to be flush.

## 3. Installation steps of eccentric parts



Screw the eccentric rod to the plate



Find the corresponding board to insert



find the hole



Insert the eccentric into the round hole



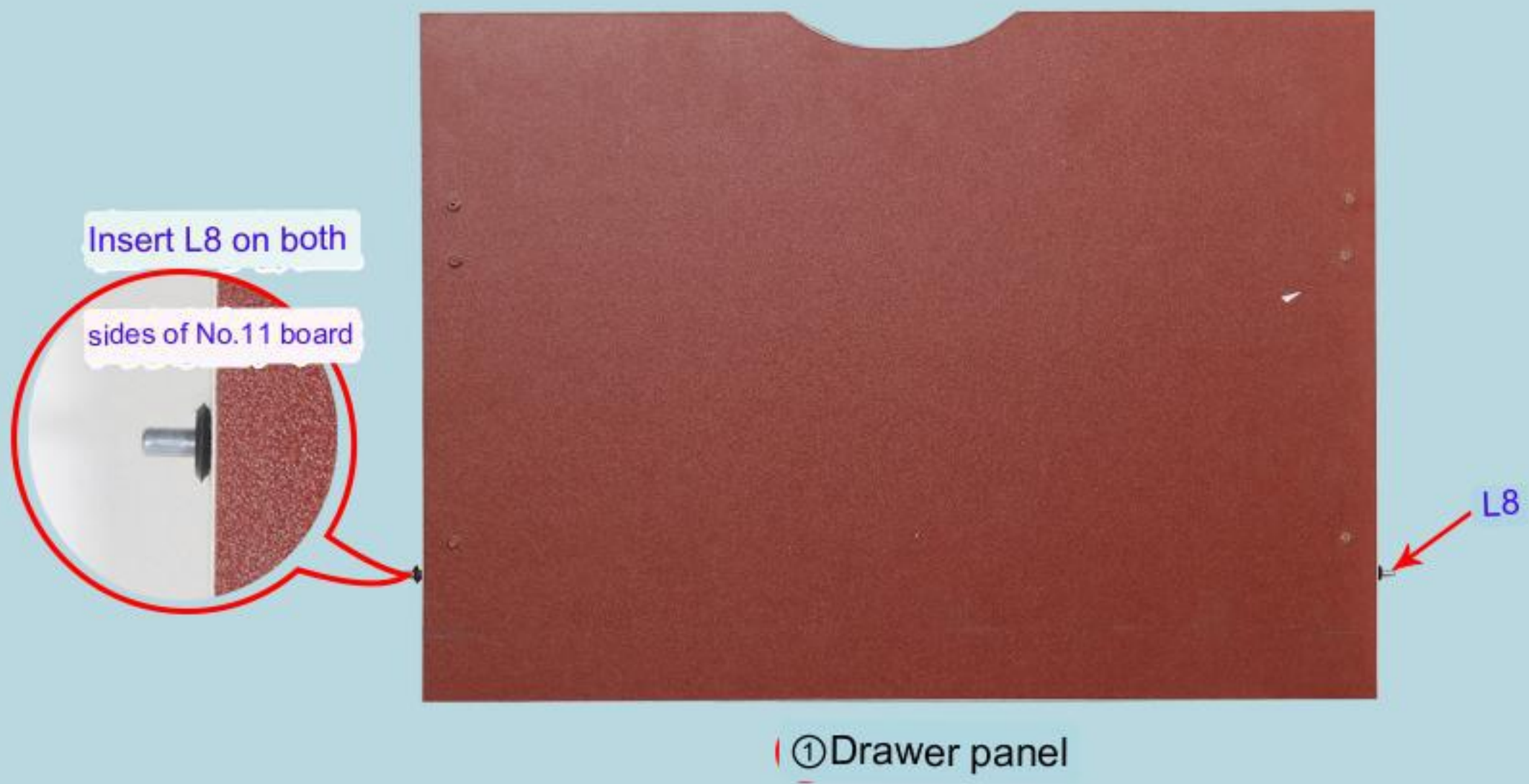
Rotate 180° clockwise to lock the board



6

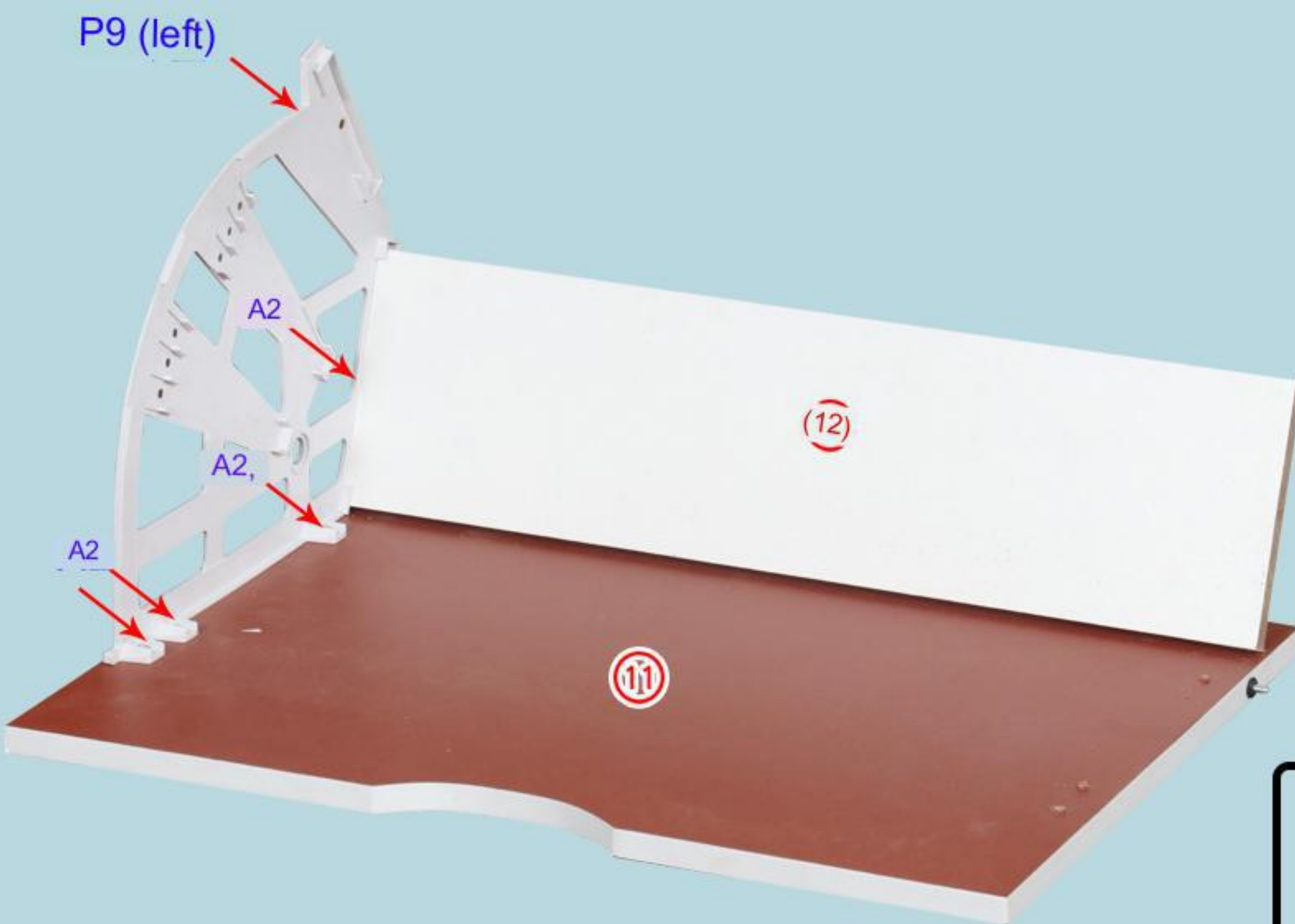
4. Start the installation: the installation of the tipping bucket

<1>



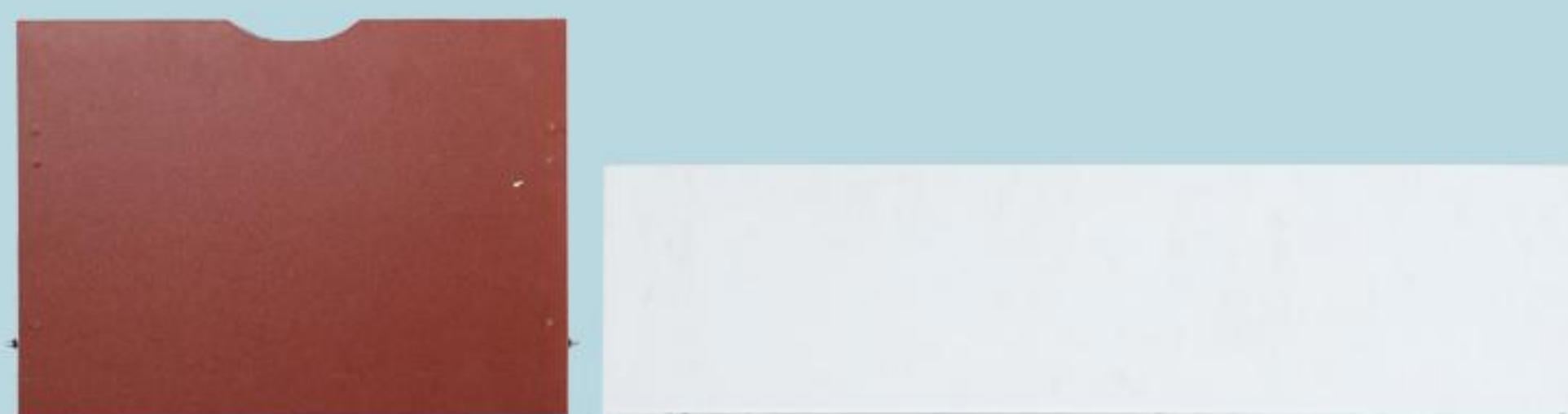

spring spacer pin
L8*2

<2>

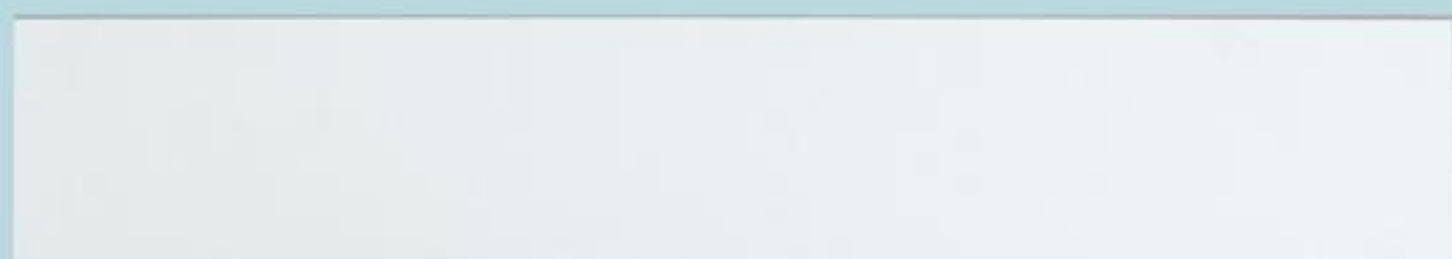



3.5*14 self-tapping screw
A2*4

Three-layer plastic tipping bucket hinge left
P9*1







② Tipping bucket laminate



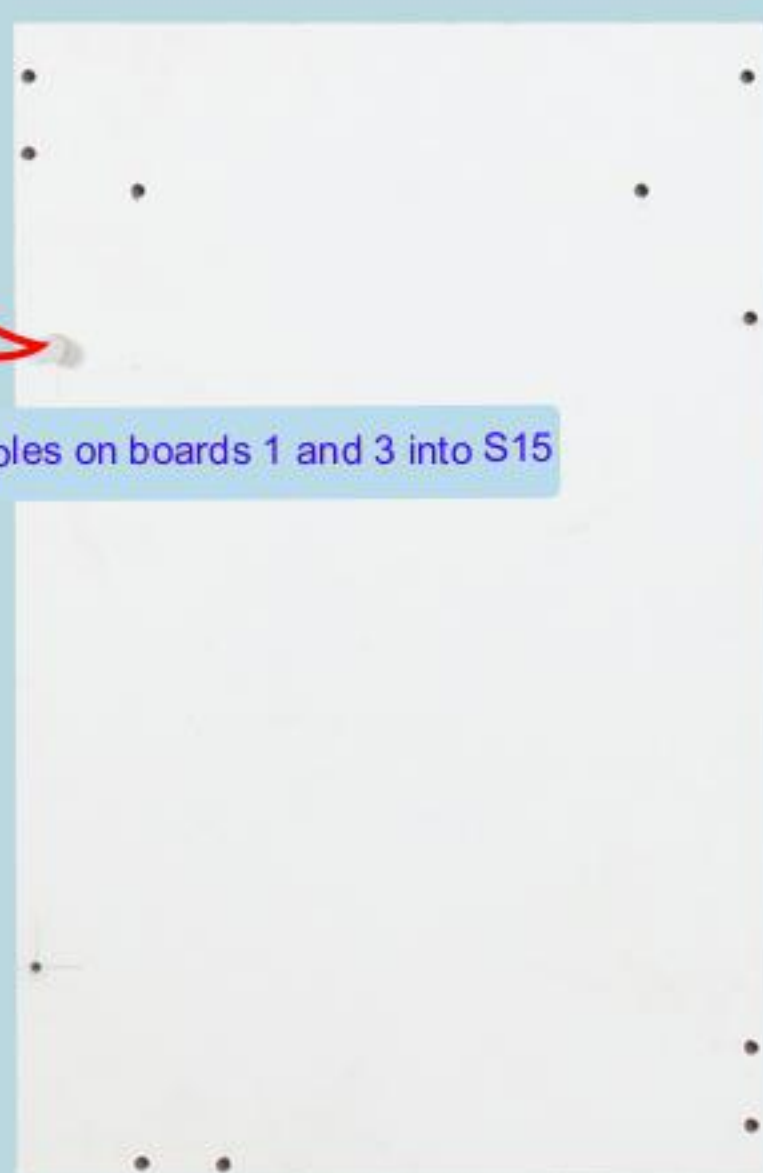
The tipping part is installed

### five .Integral part installation

<1>



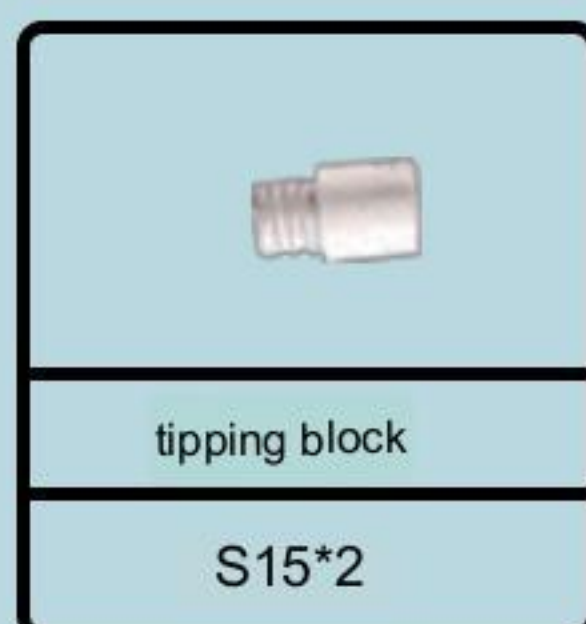
Plug the non-penetrating holes on boards 1 and 3 into S15



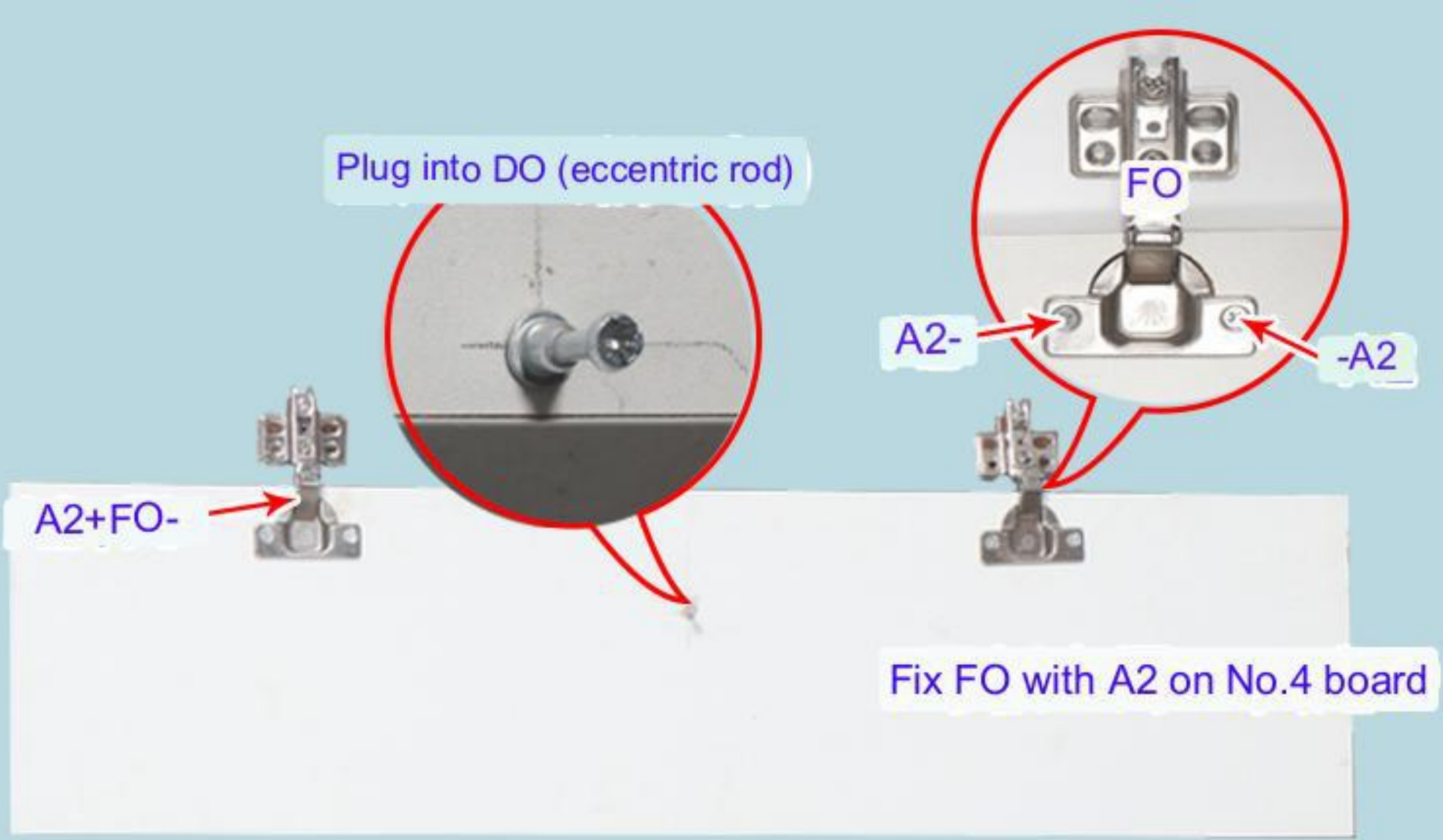
① Left panel



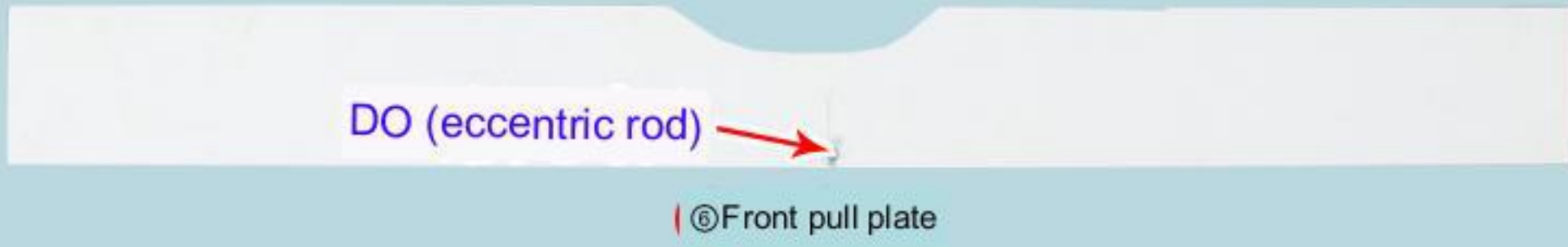
③ Right side panel



<2>

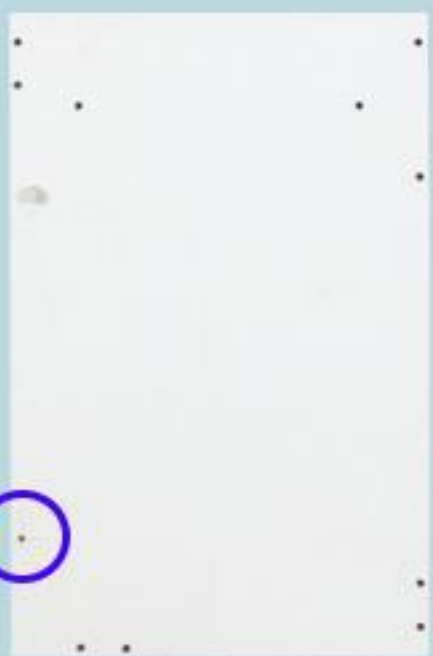


④ Upper and rear pull plate

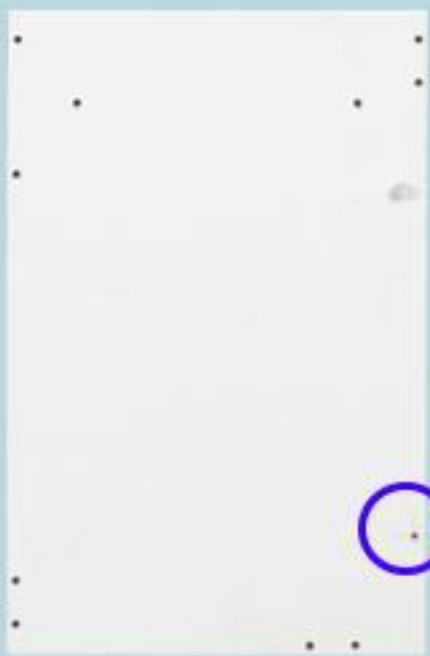


		
Eccentric rod	3.5*14 self-tapping screw	straight arm hinge
D0*2	A2*4	F0*2

<3>



① left panel



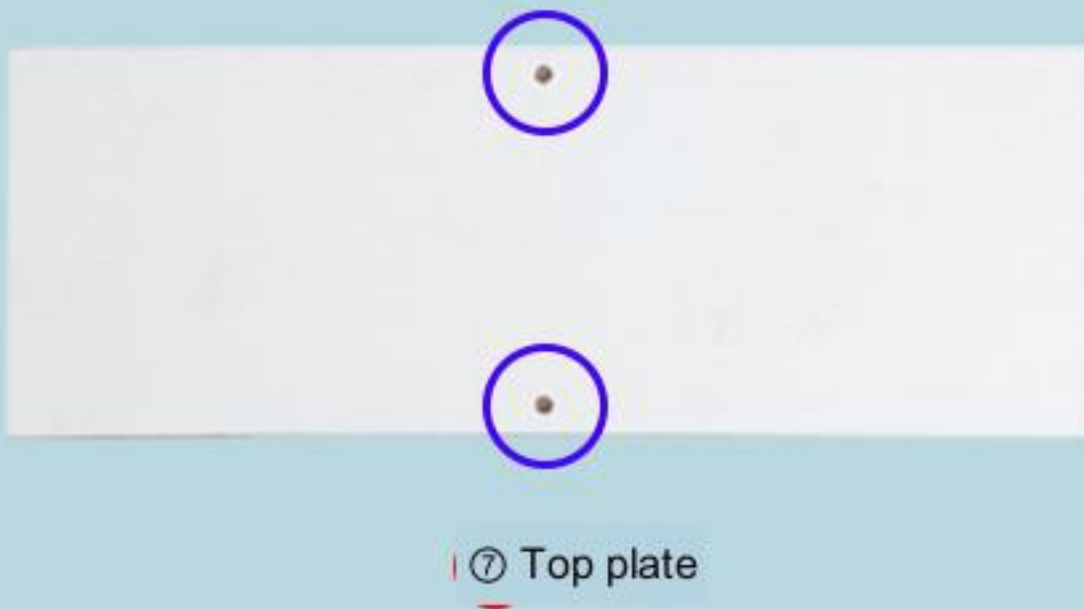
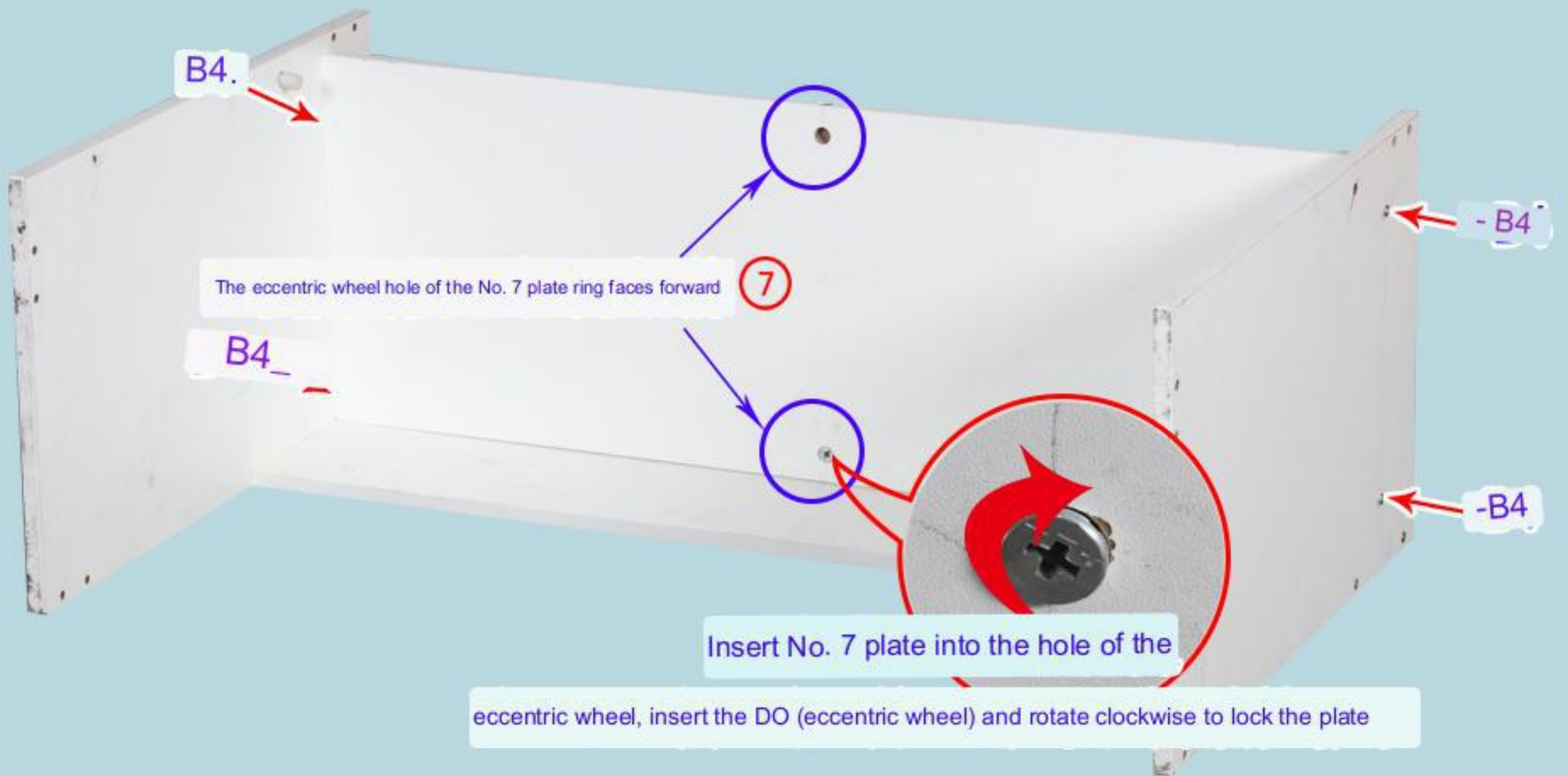
③ Right side panel




④ Upper back pull plate


4*40 self-tapping screws
B4*4

<4>



	
Eccentric wheel	4*40 self-tapping screws
D0*1	B4*4

<5>

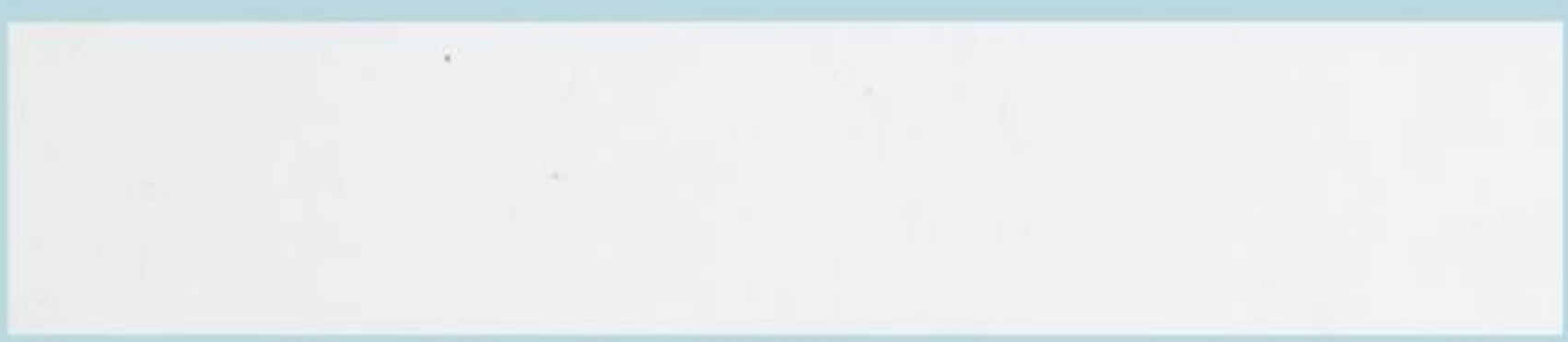


	
Eccentric wheel	4*40 self-tapping screws
D0*1	B4*4




⑨ Drop-down plate


4*40 self-tapping screws
B4*4



⑩ Bottom plate


4*40 self-tapping screws
B4*4

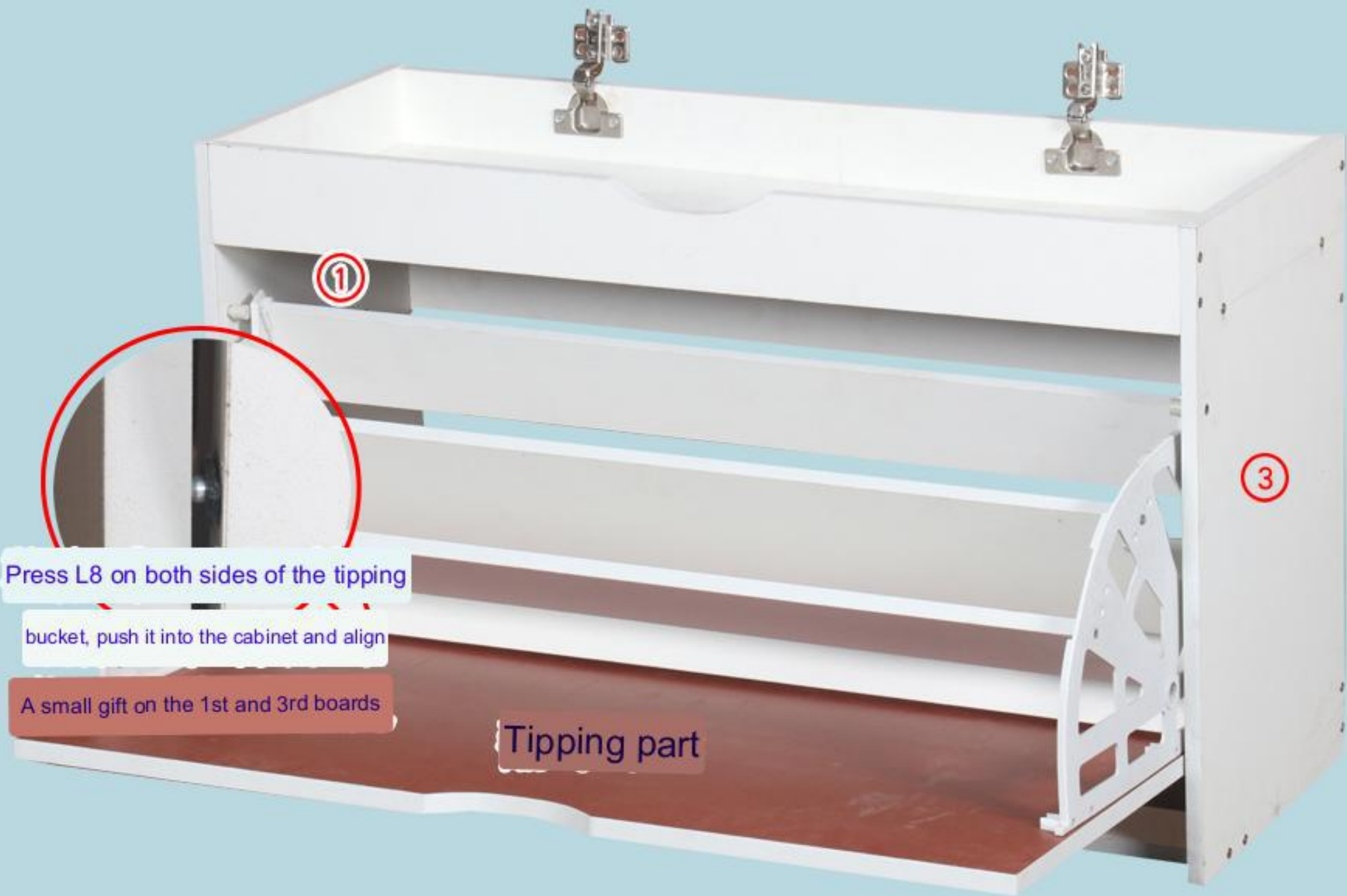


<8>

straighten the whole



<9>



Press L8 on both sides of the tipping

bucket, push it into the cabinet and align

A small gift on the 1st and 3rd boards

Tipping part

Fixed FO with A2 on board 14



④ Cushion



<11>Complete figure



The installation is complete

Producer: LIN

Reviewer: Big Dog