





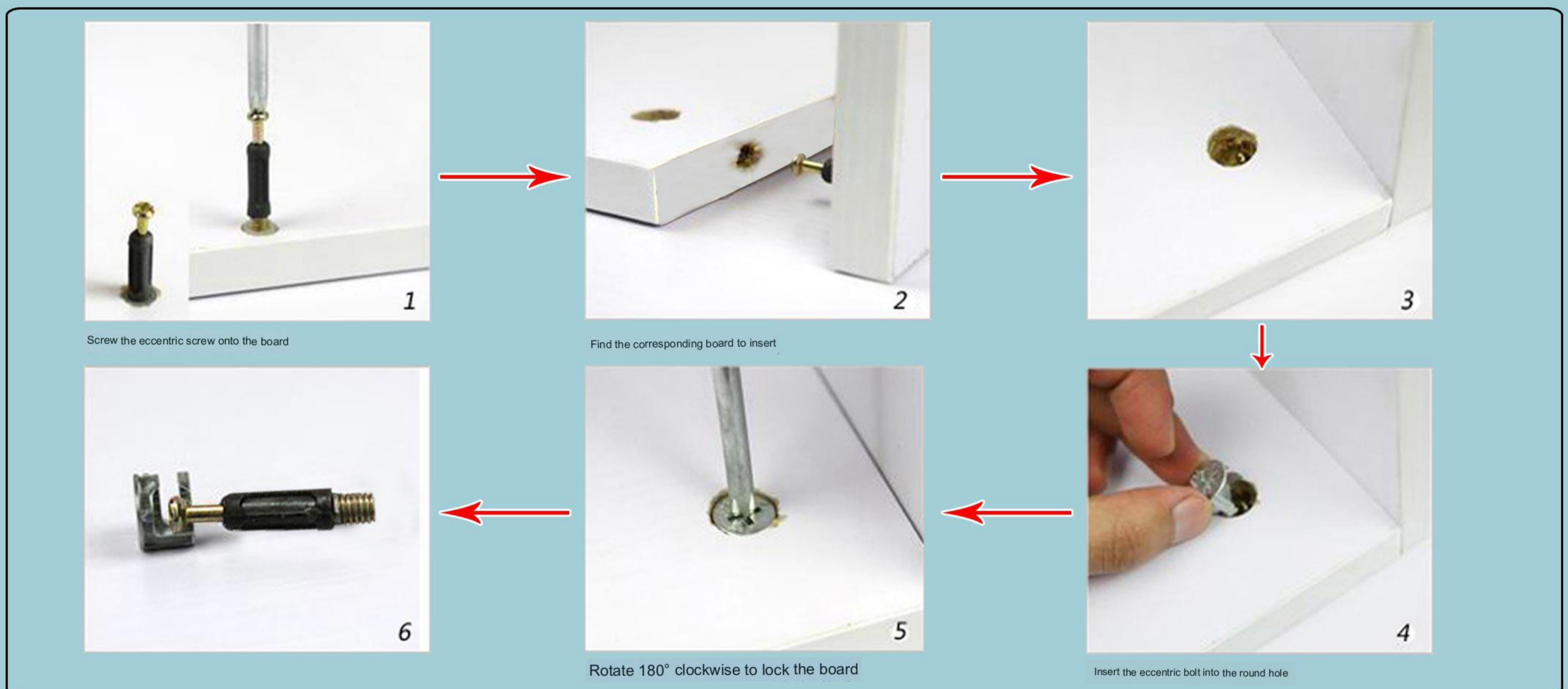
BS007-14 Tiers with Drawer Installation Instruction

								
Eccentric screw	Eccentric Bolt	4CM self-tapping screw	Smallest self-tapping screw	angle iron	No trace nail	metal pin	spring pin	small nail
A*2	B*2	C*35	D*3	E*1	F*1	G*2	H*1	I*10

Reminder: The

Tighten it when you're all done!

installation principle of eccentric parts:

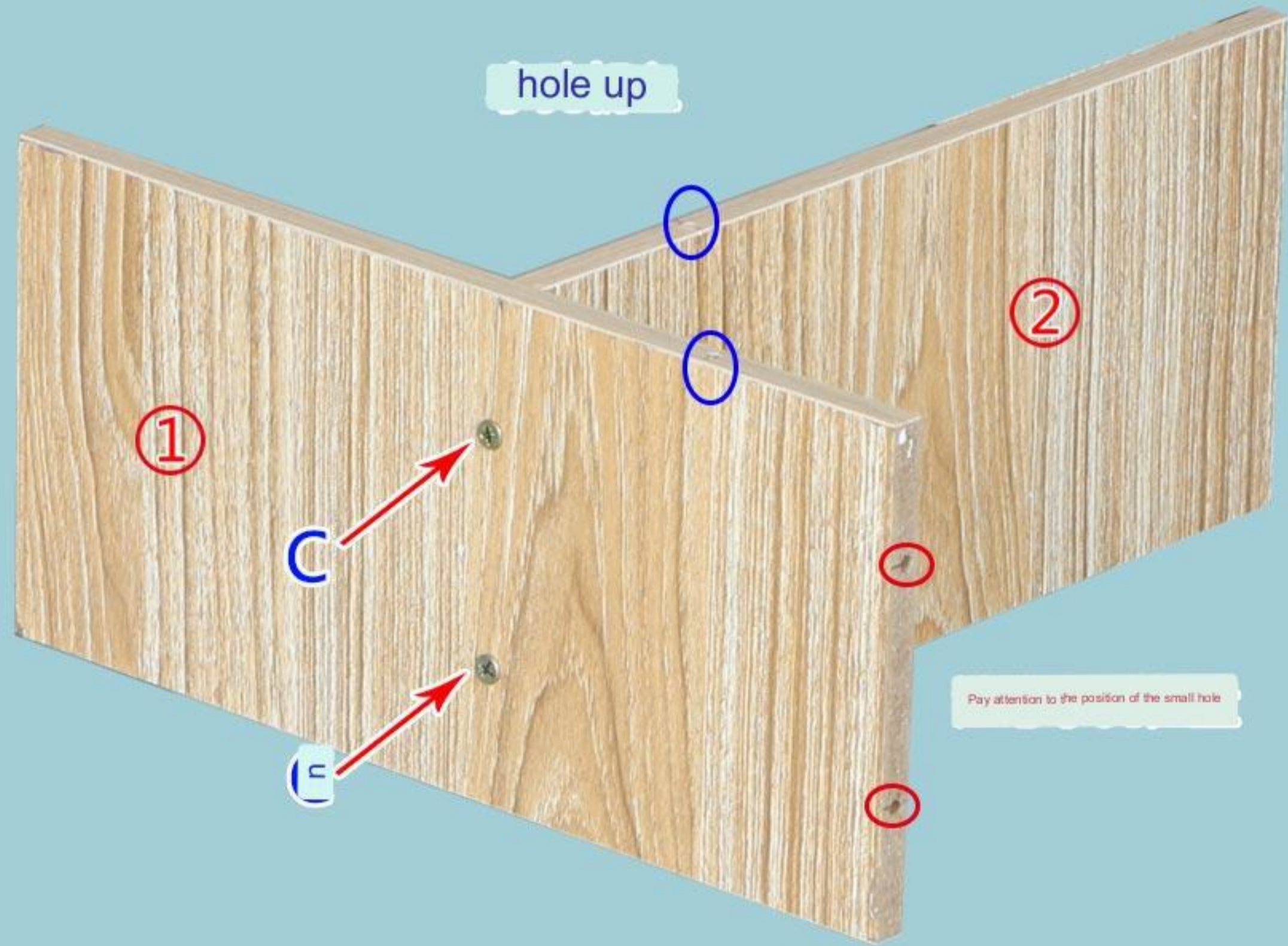
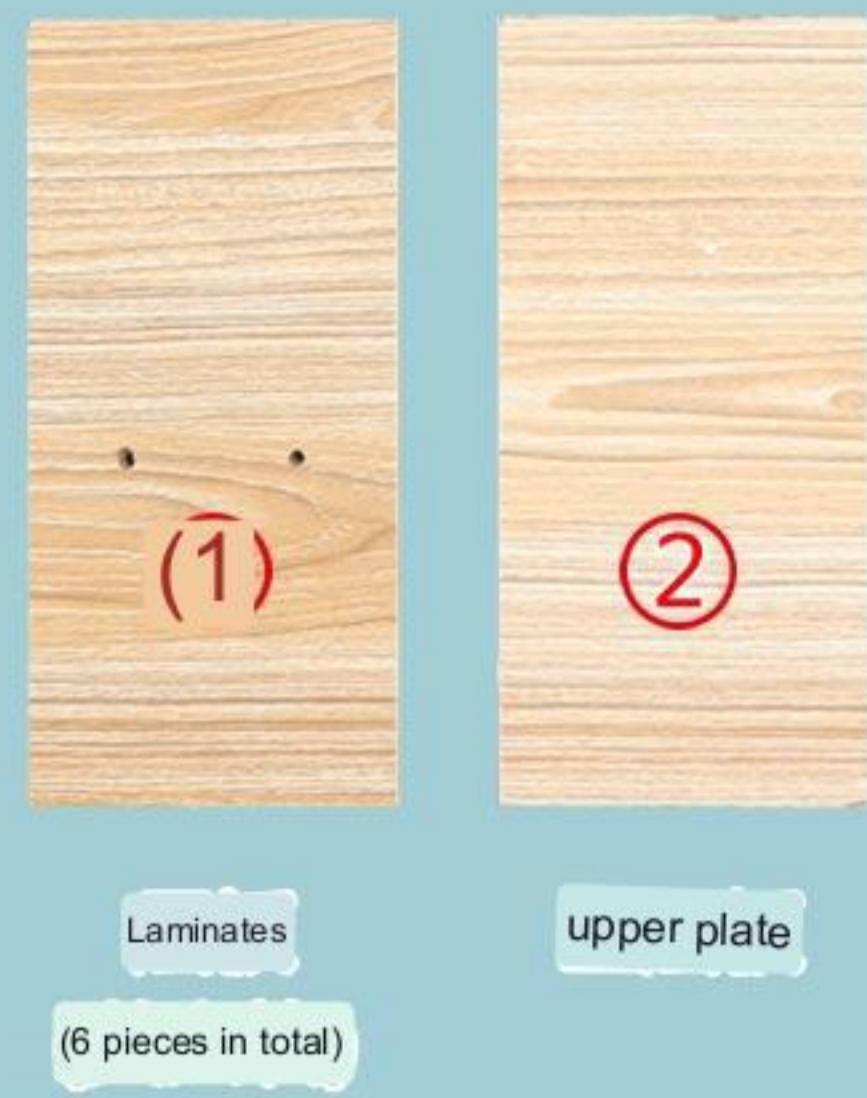


installation steps:

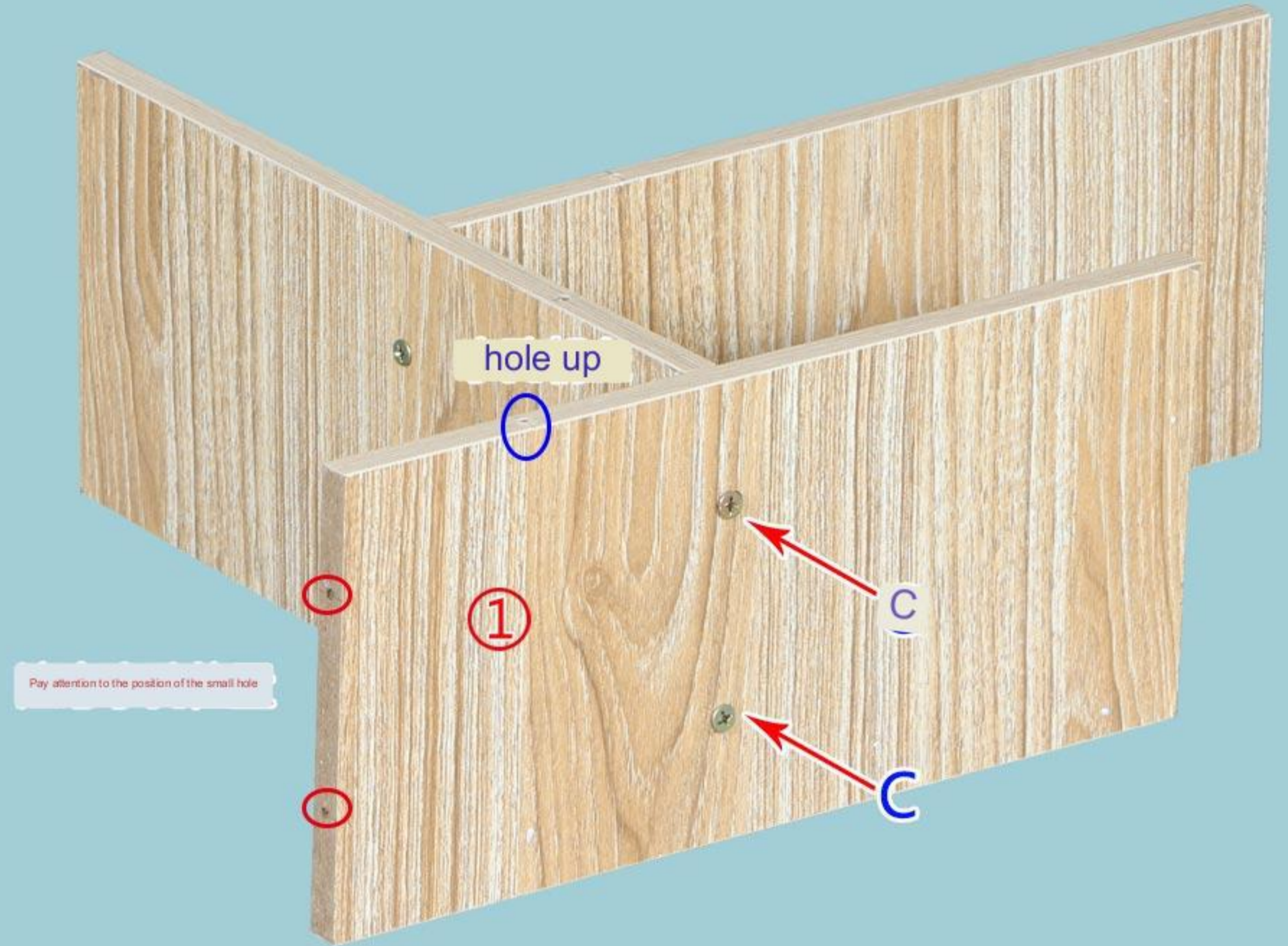


Step 1: Whole Parts Installation

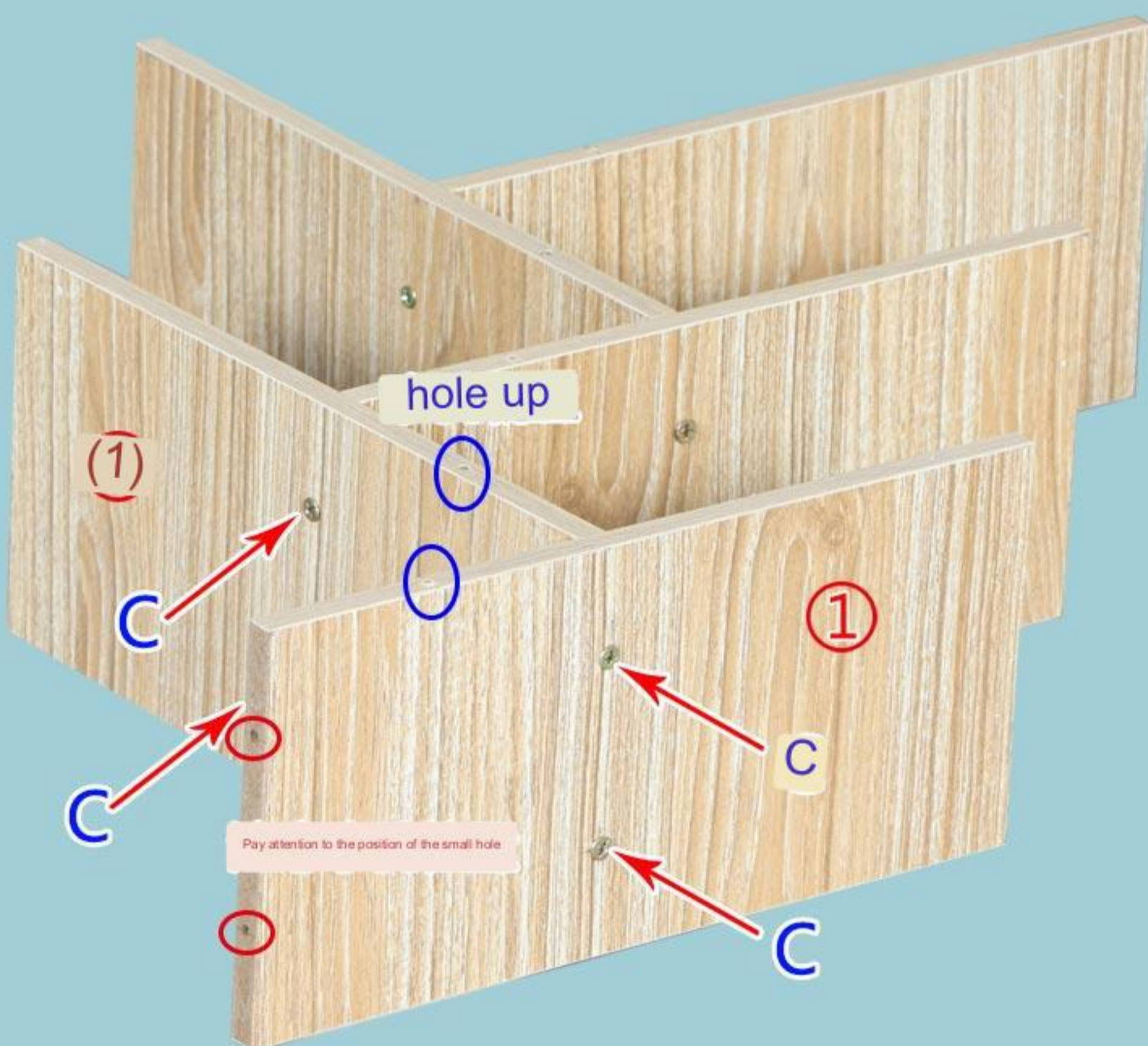
<1>



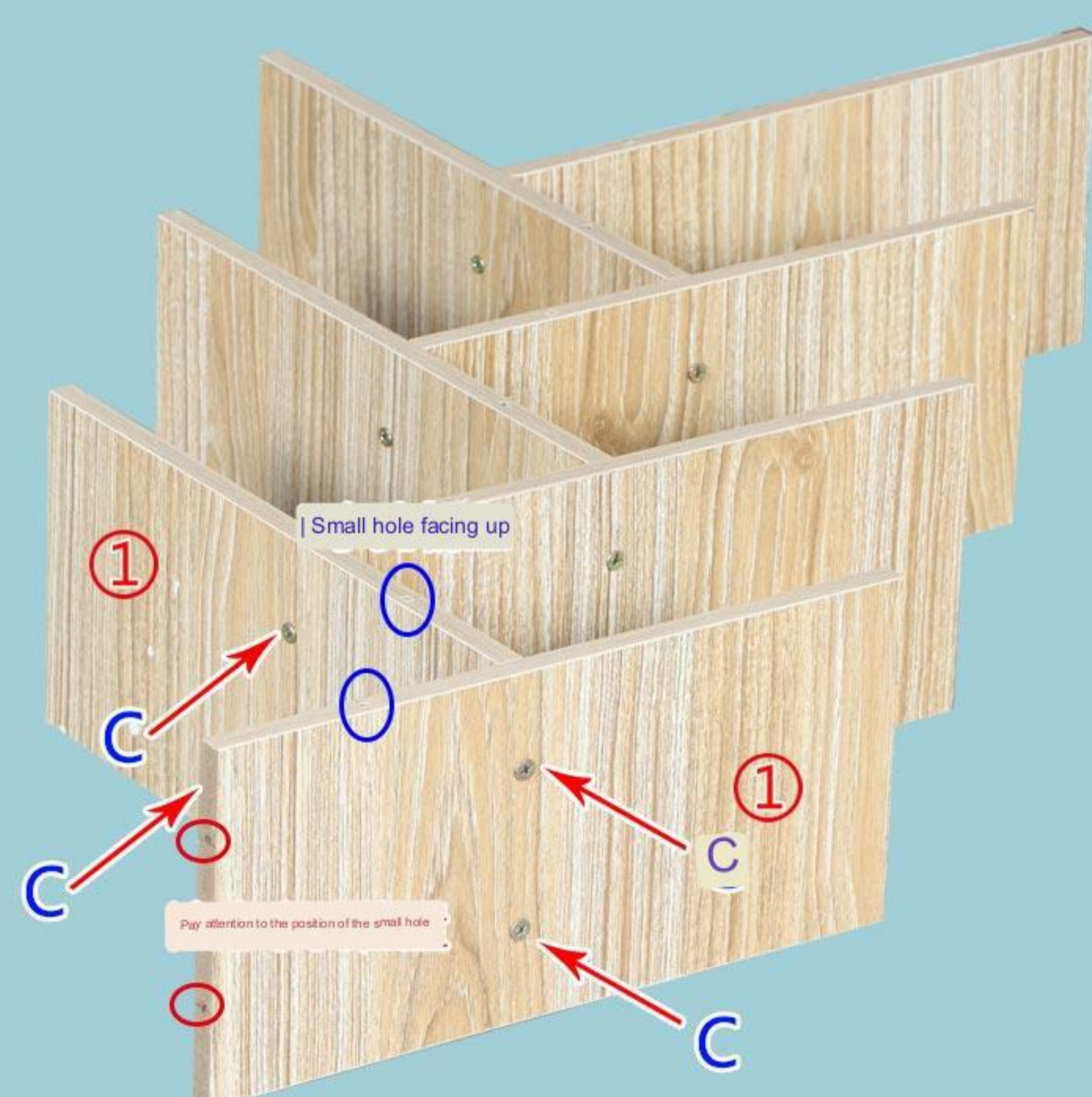
<2>



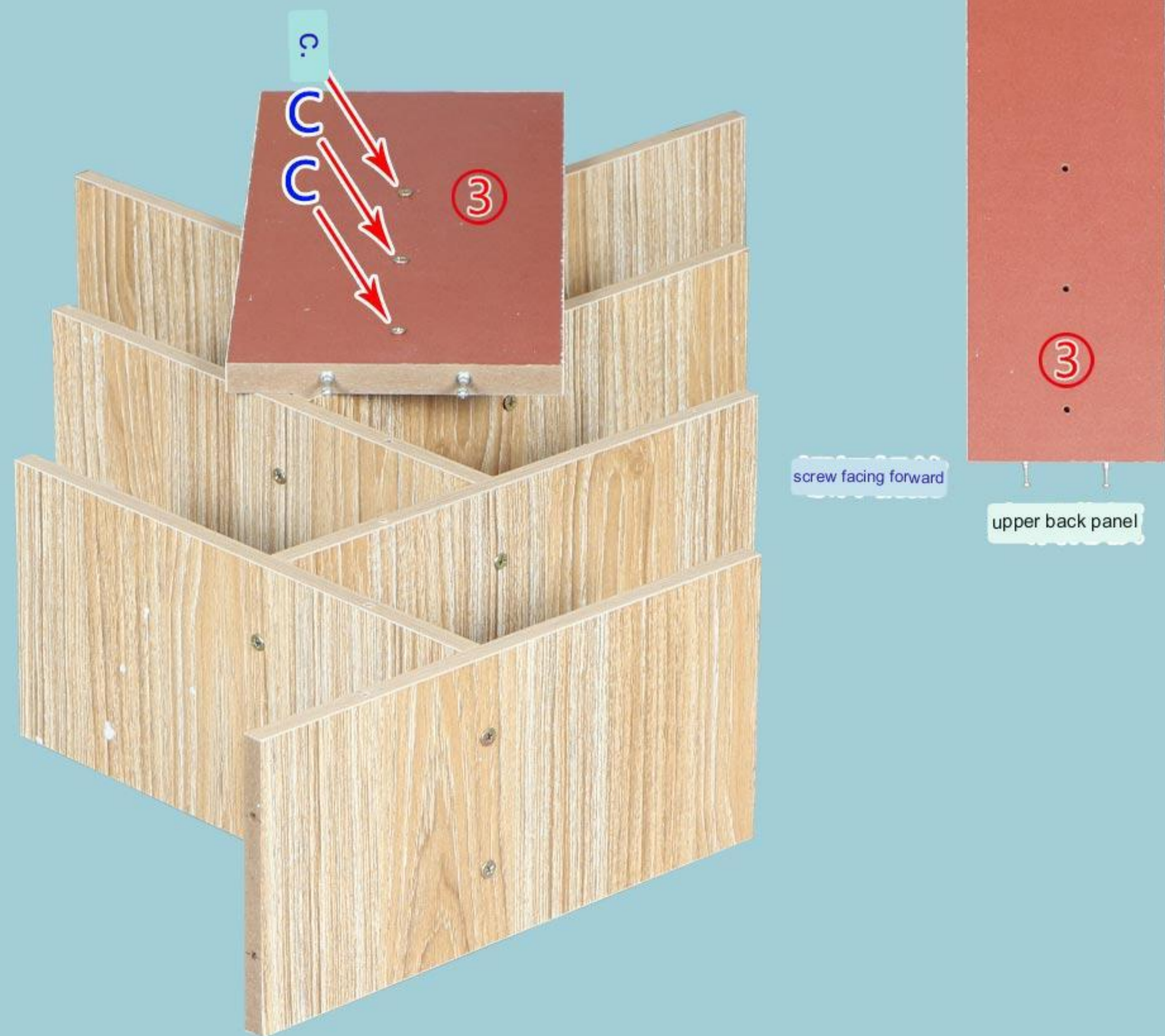
<3>



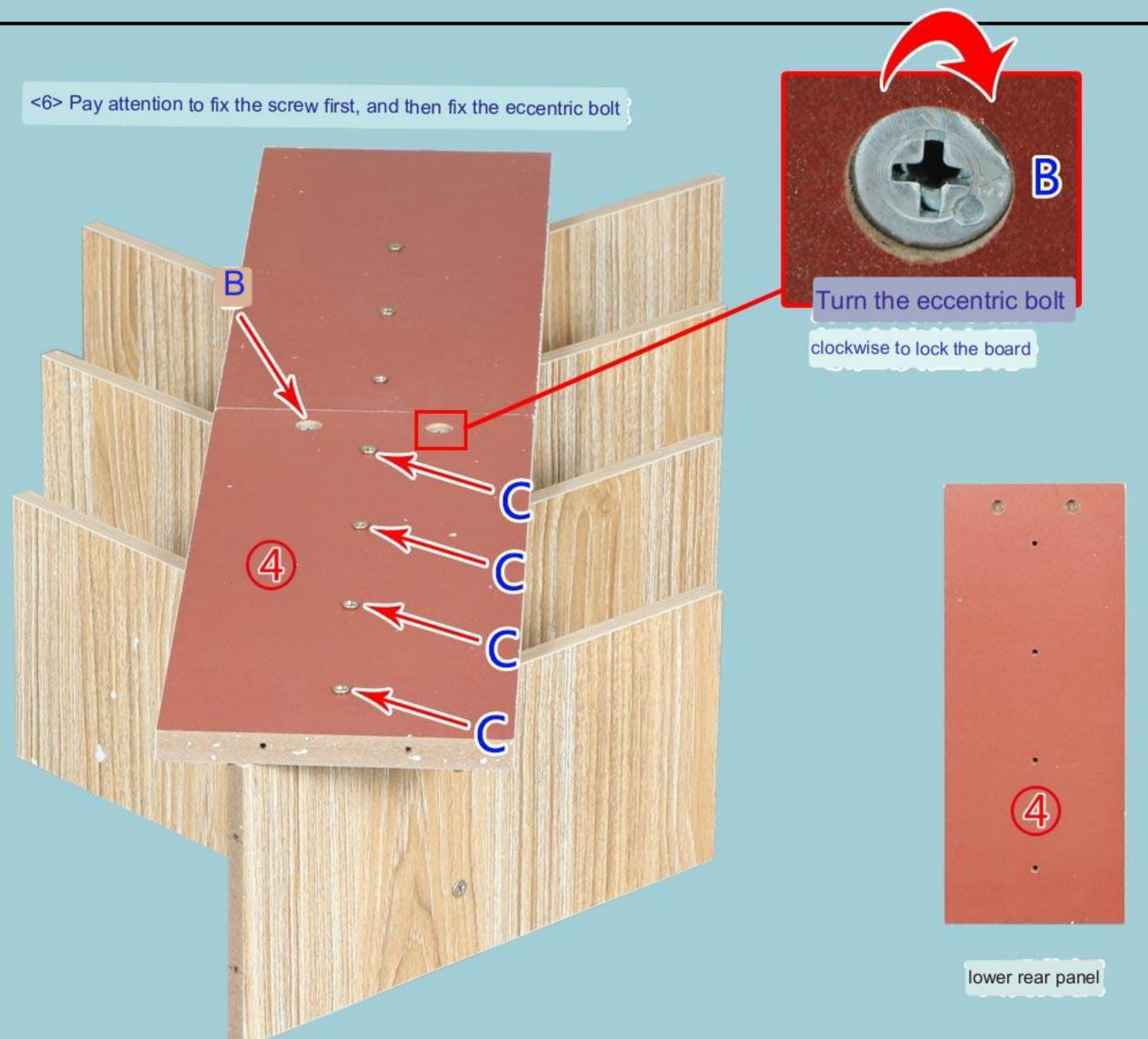
<4>

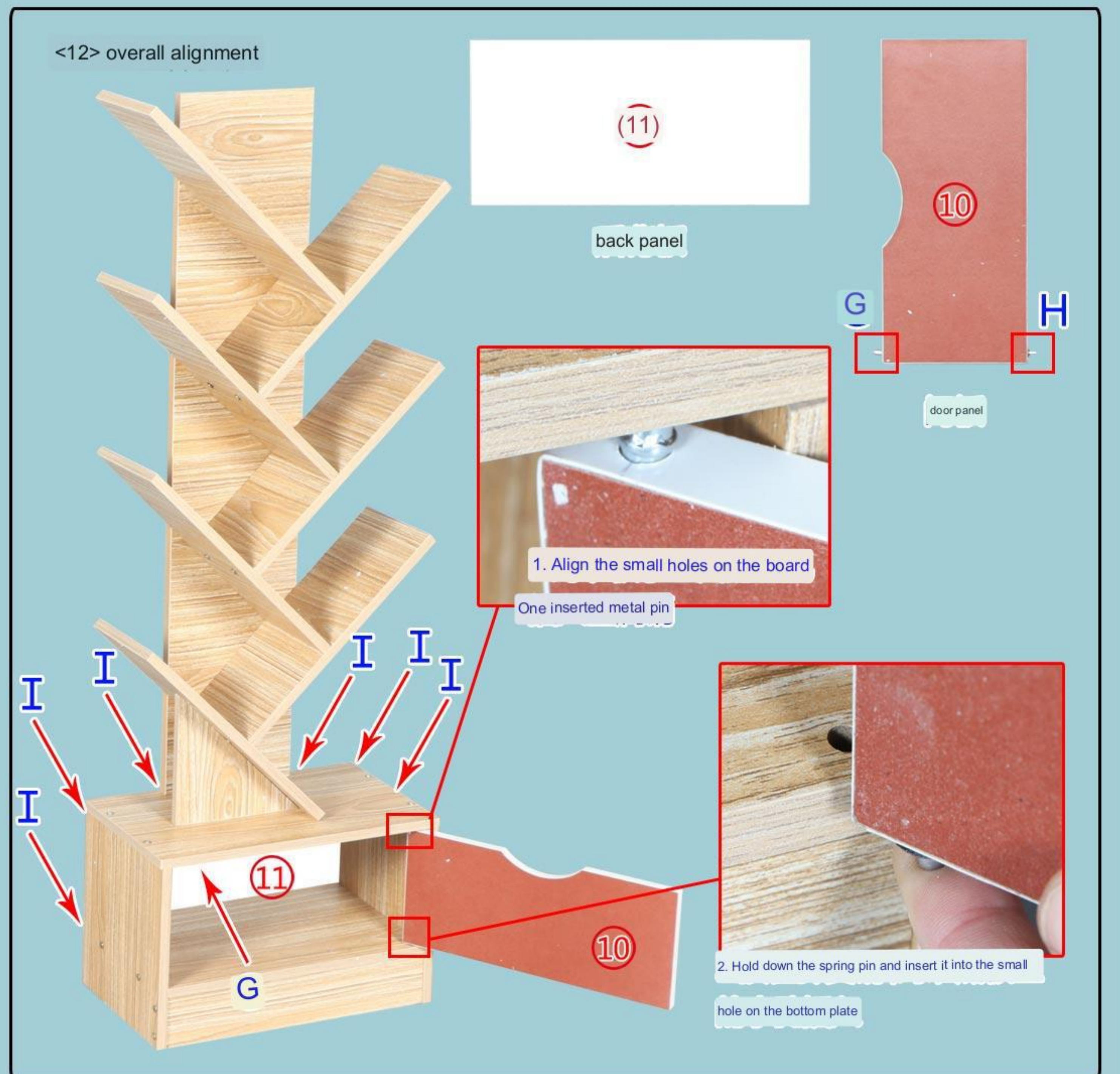
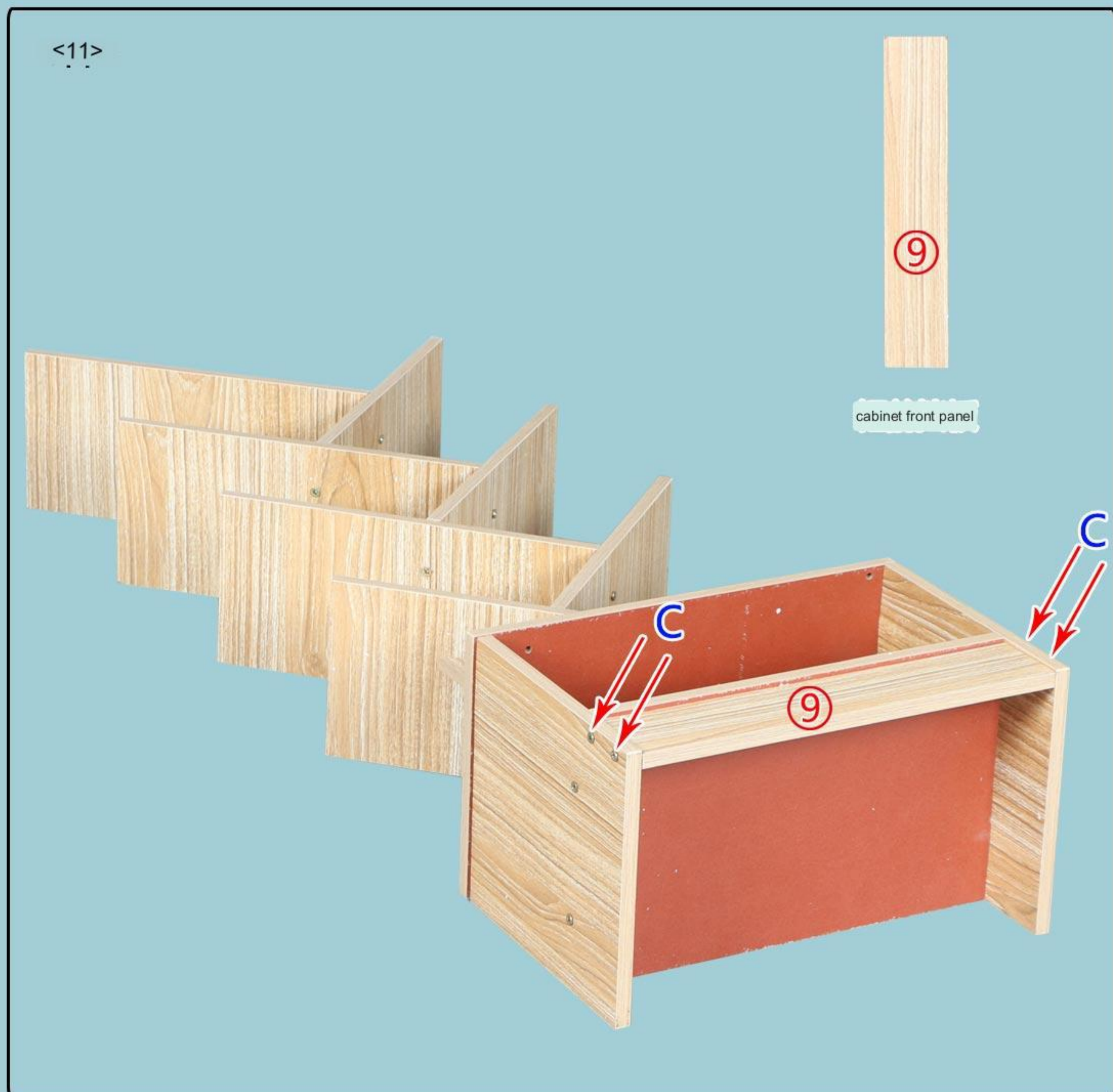
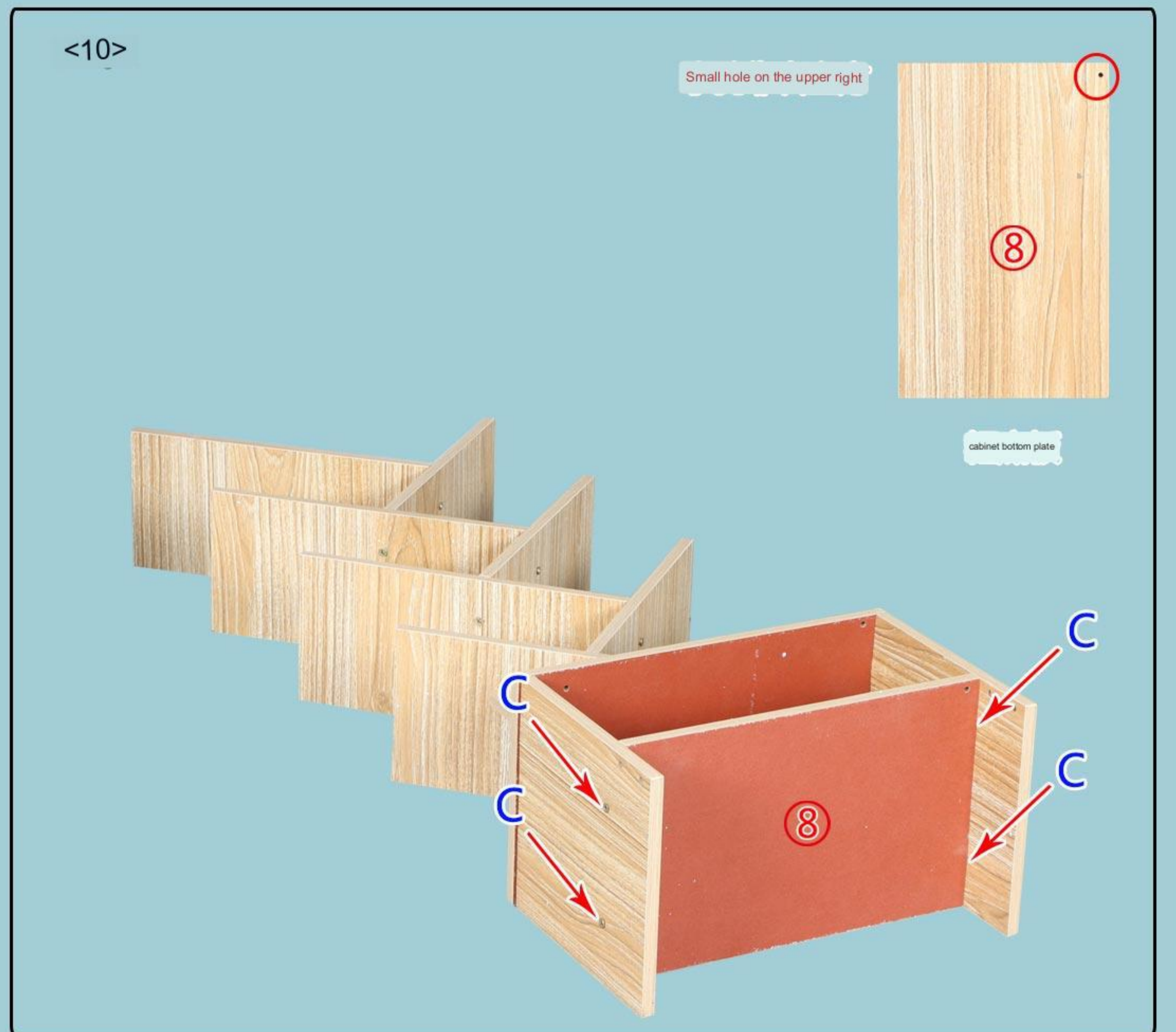
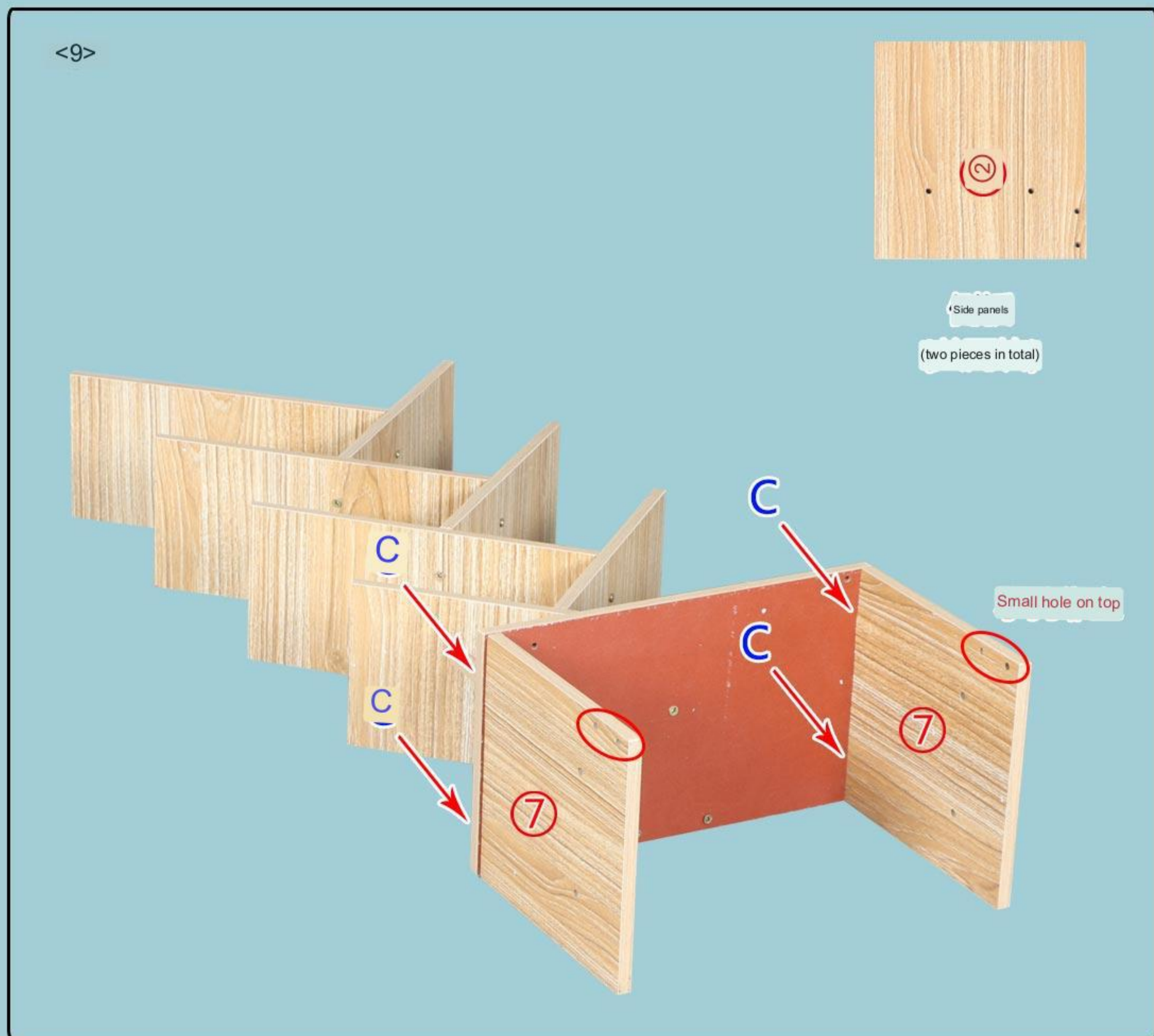
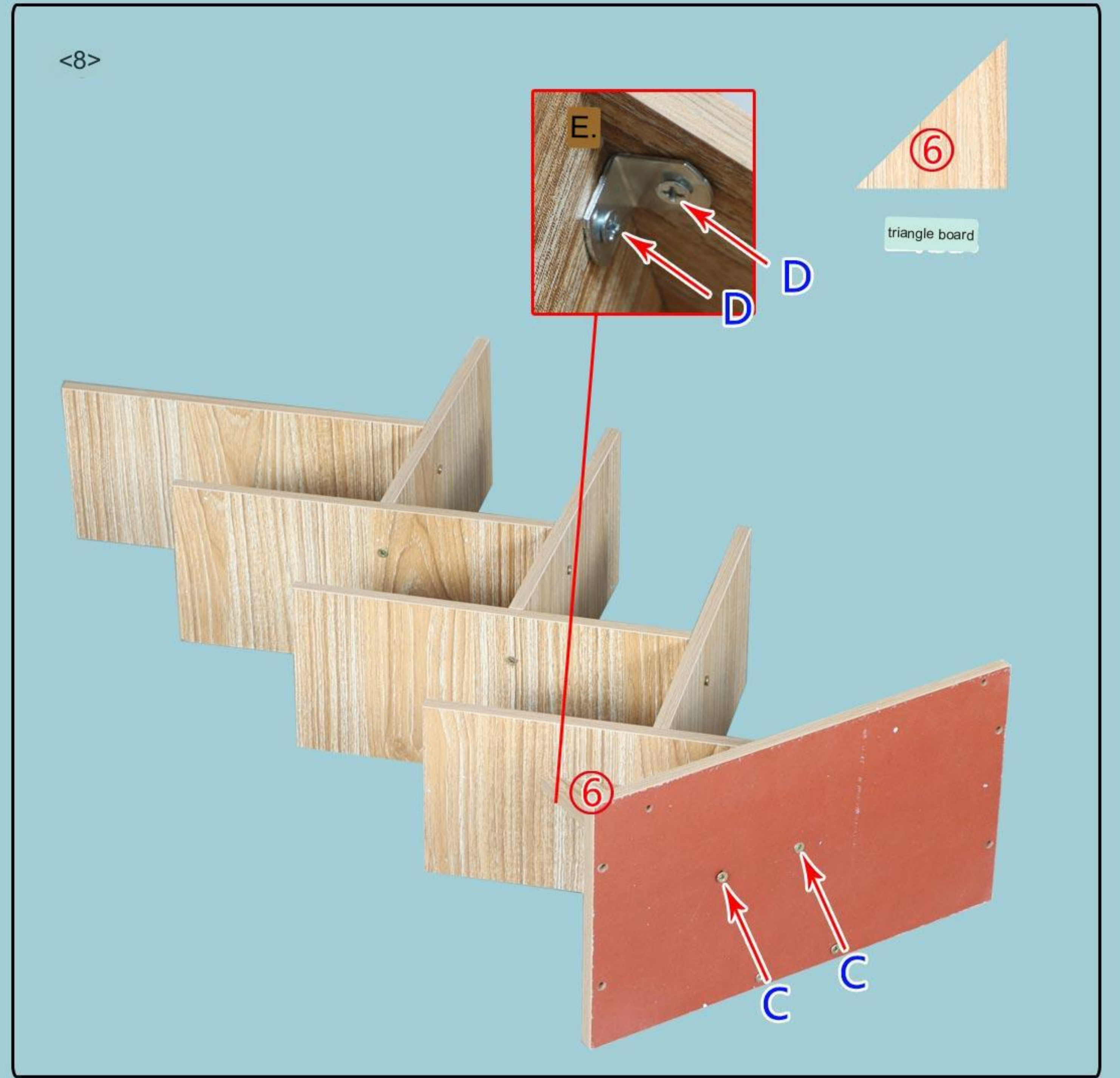
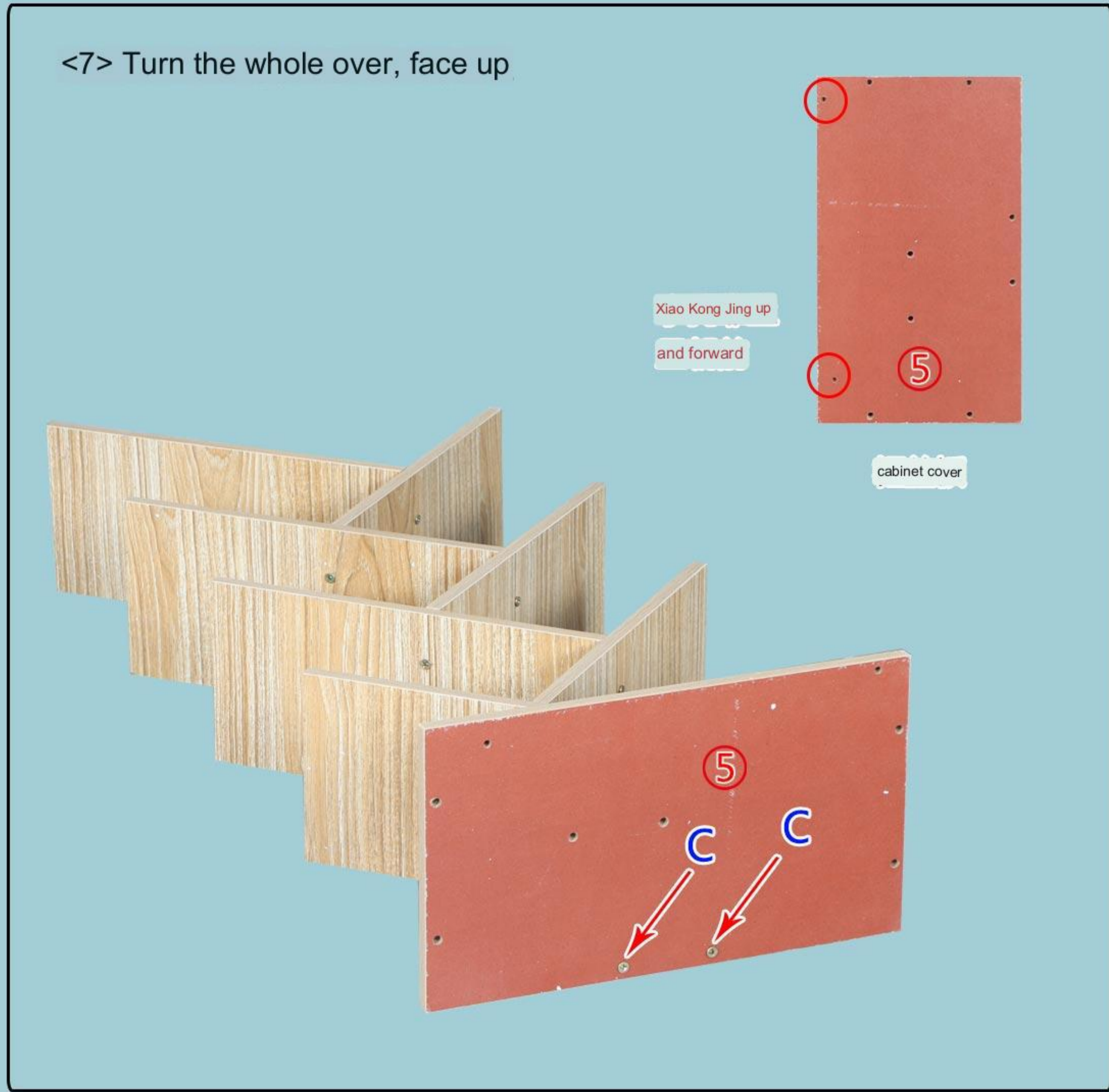


<5>

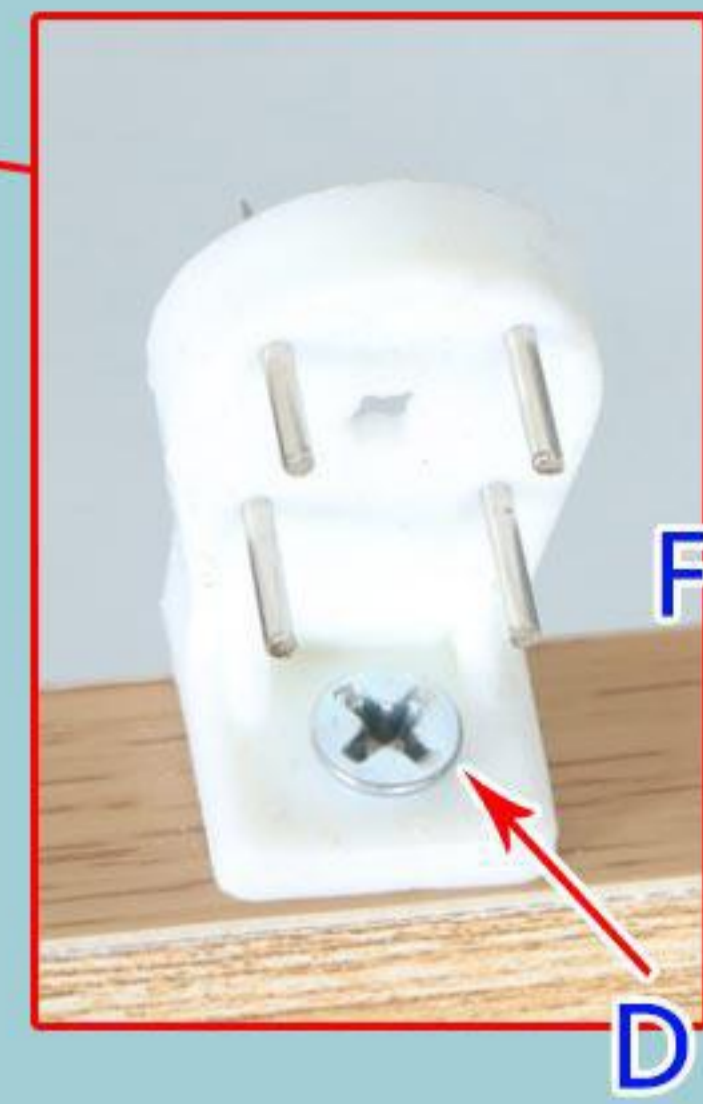


<6> Pay attention to fix the screw first, and then fix the eccentric bolt





<13>Installation completed



Complete drawing!

First use the smallest self-tapping screws to fix the non-marking

nails, and then knock the small nails on the device into the wall