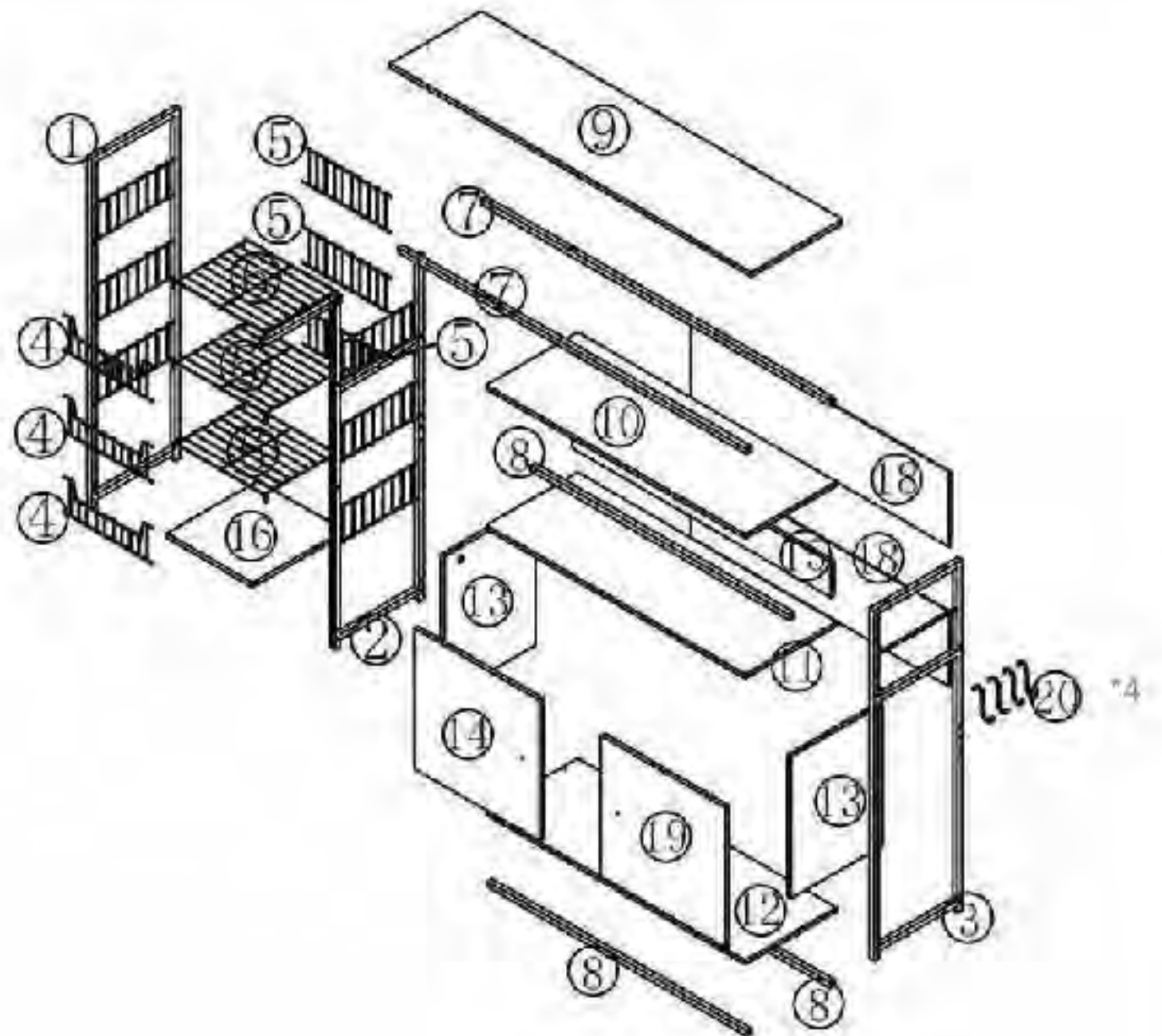
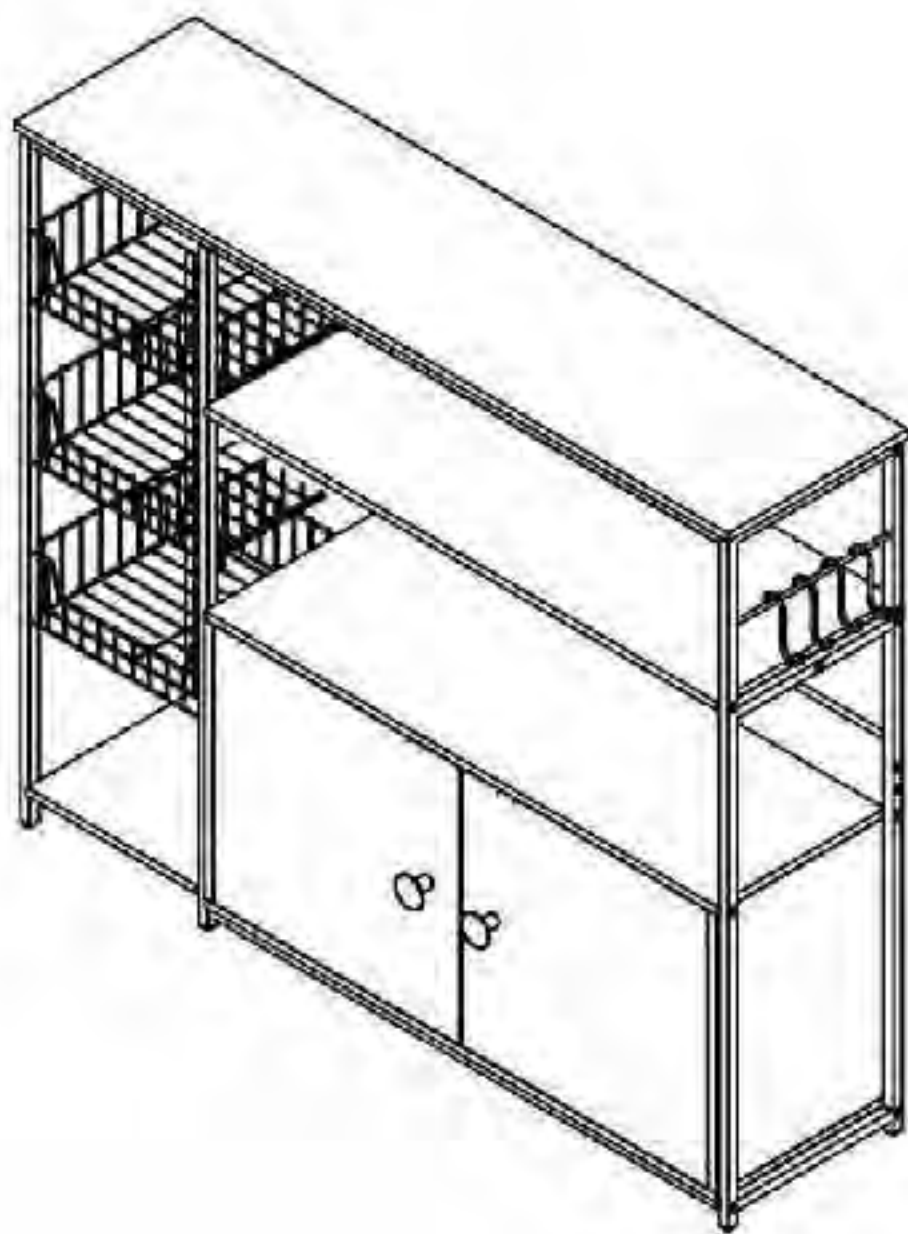


# WCK006-100CM Installation Instruction

Please be sure to use a manual screwdriver and refrain from using an electric drill.



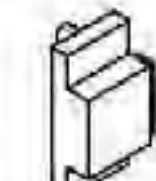
B4\*5



D14\*5



L8\*2



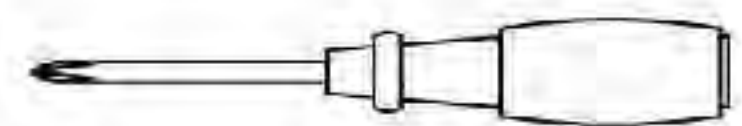
L18\*2



L19\*2



A1\*3



Screwdriver\*1



N19\*7



JO\*2



B14\*3



C1\*22



KO\*2



E6\*14



E2\*7



K20\*22



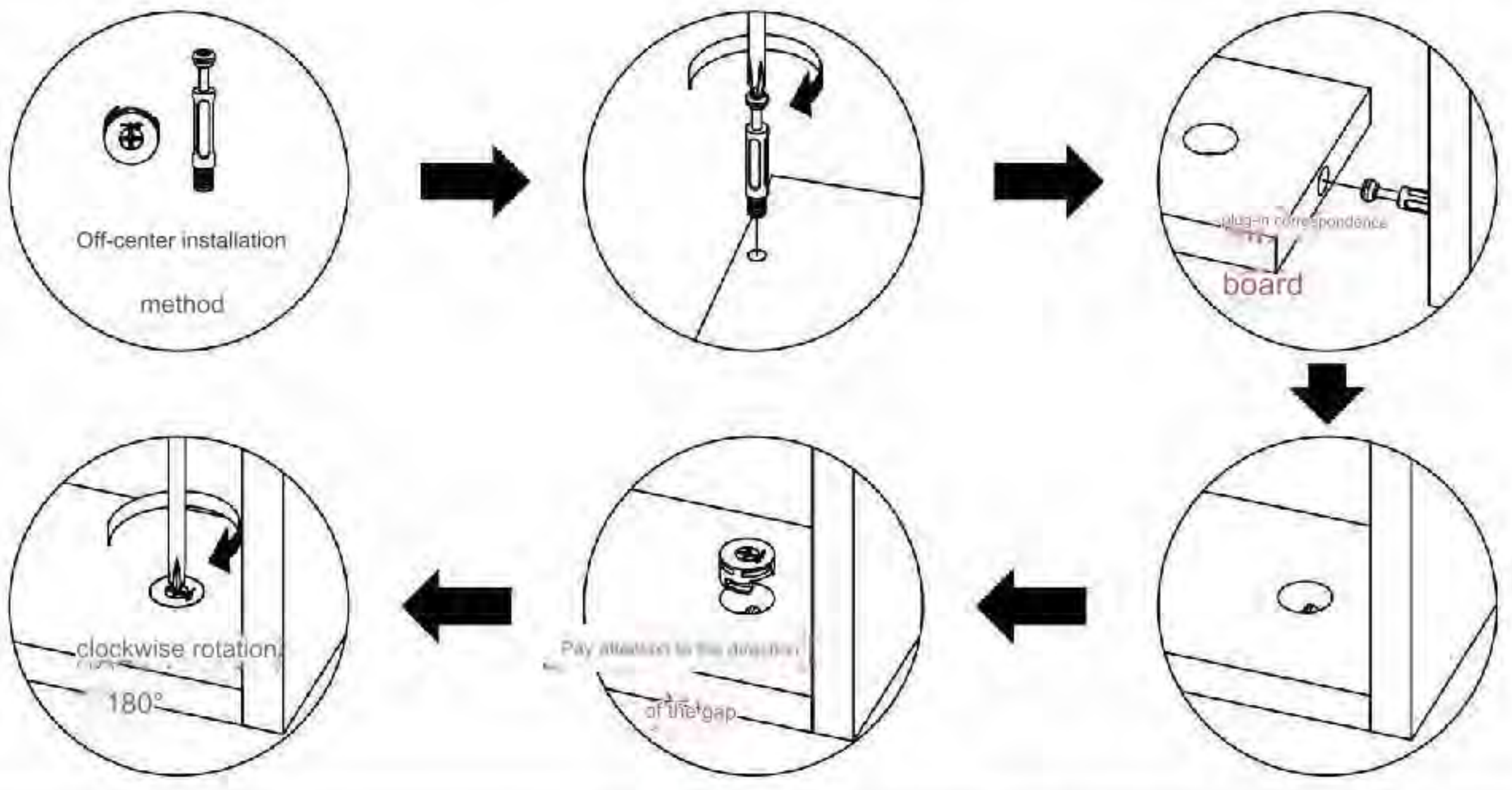
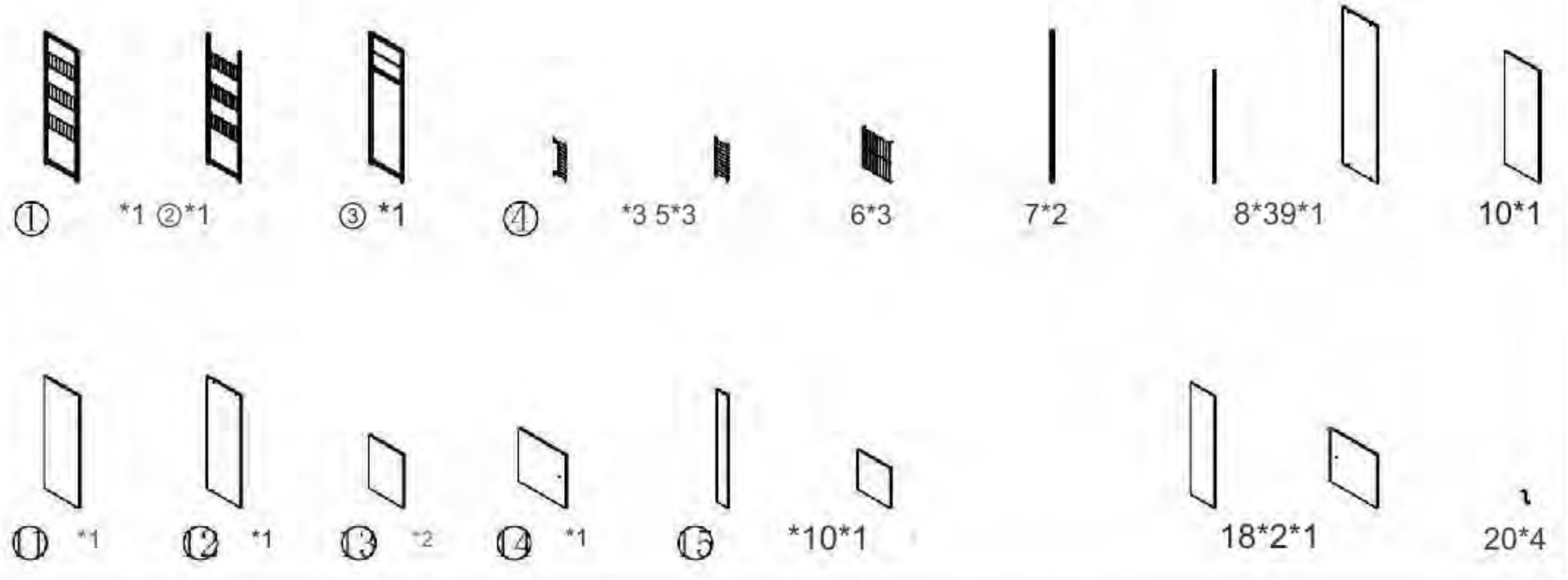
Please turn page

**Operations**

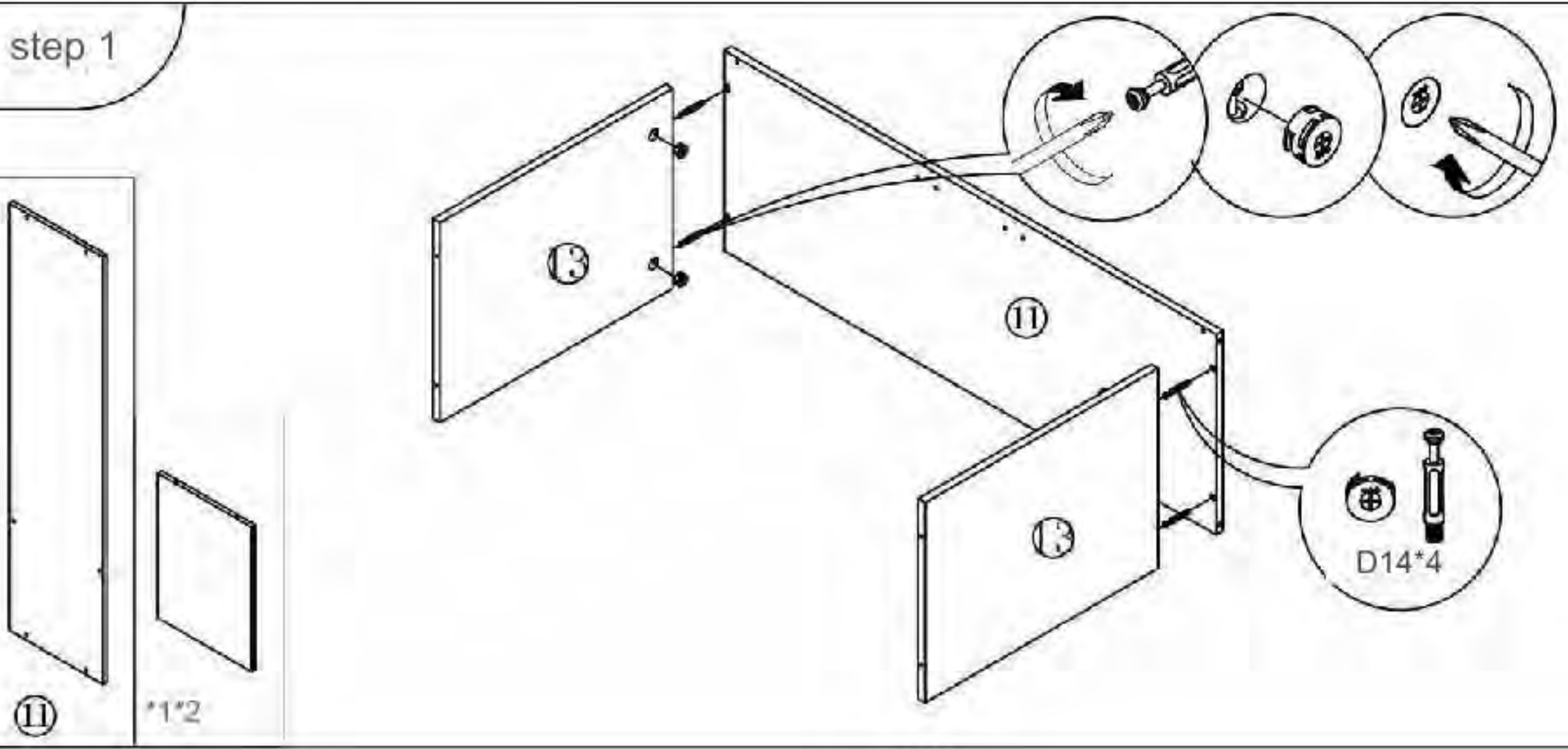
☆1. Since boards and screws are not universal, please read the instructions carefully before installation and distinguish each type of board ☆ and screws.

**Must See**

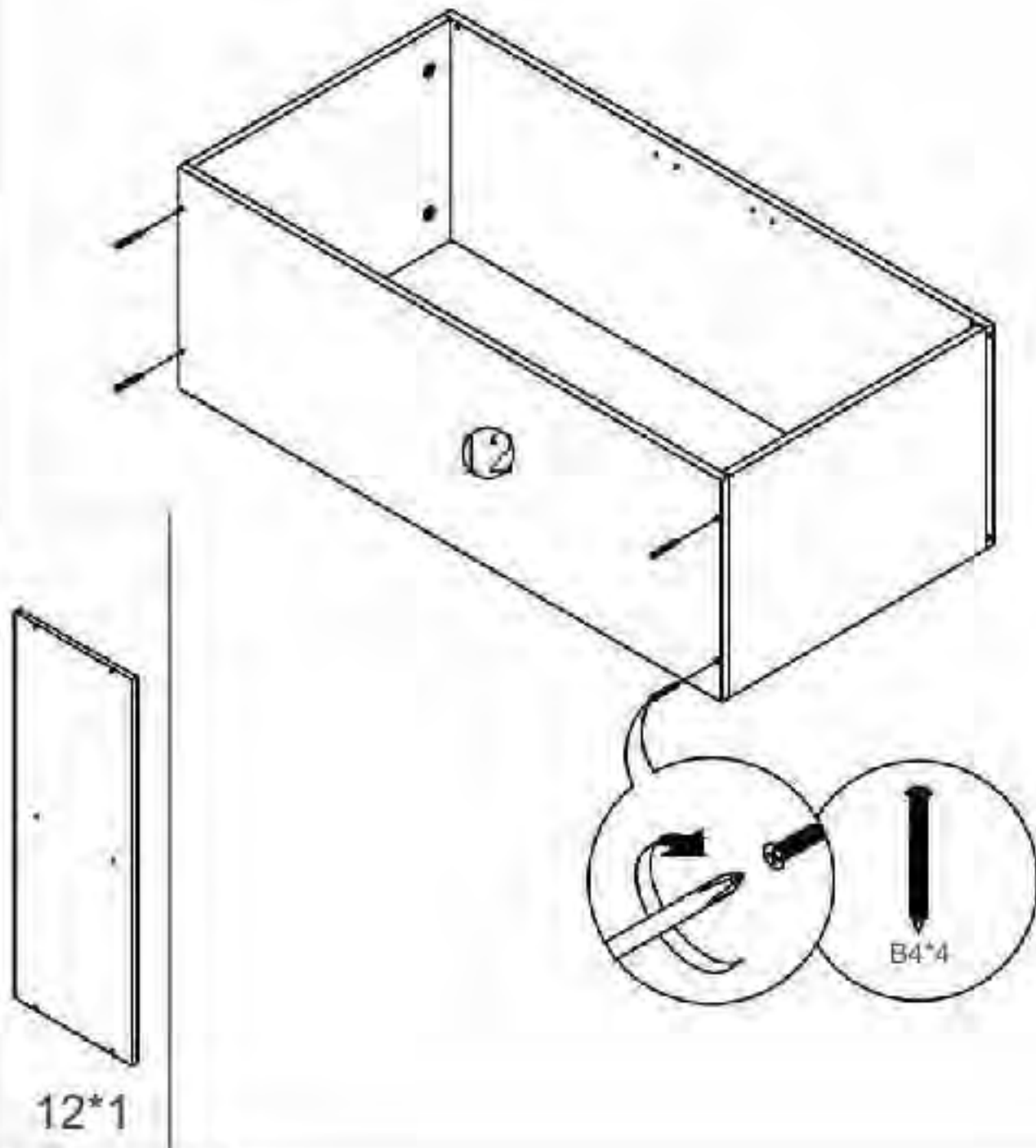
☆2. Please tighten the screws 70% during installation, and then tighten all screws after all installation is completed.



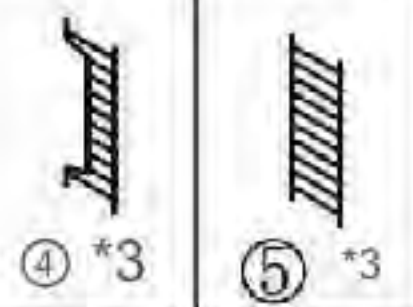
**step 1**



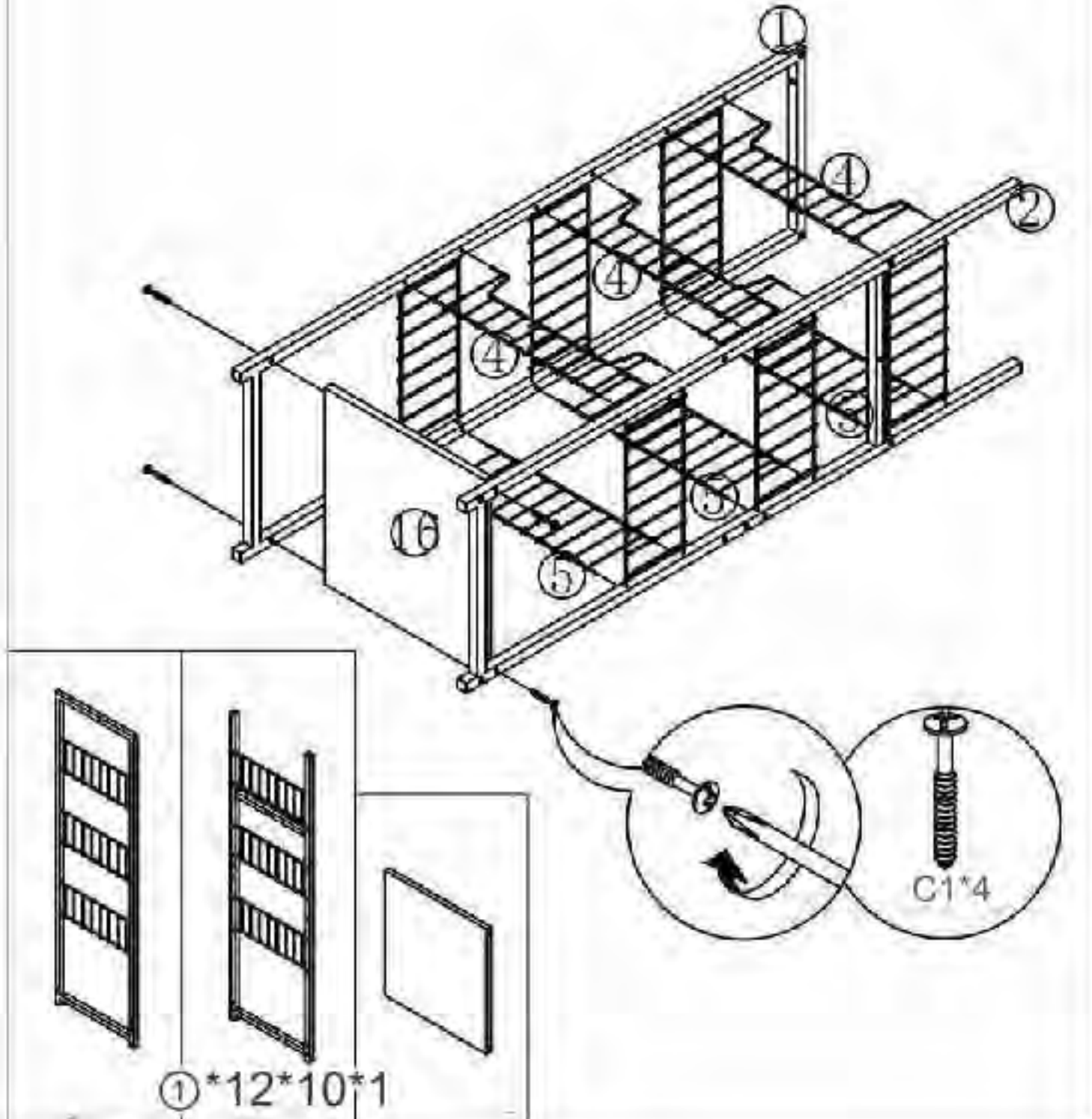
Step 2



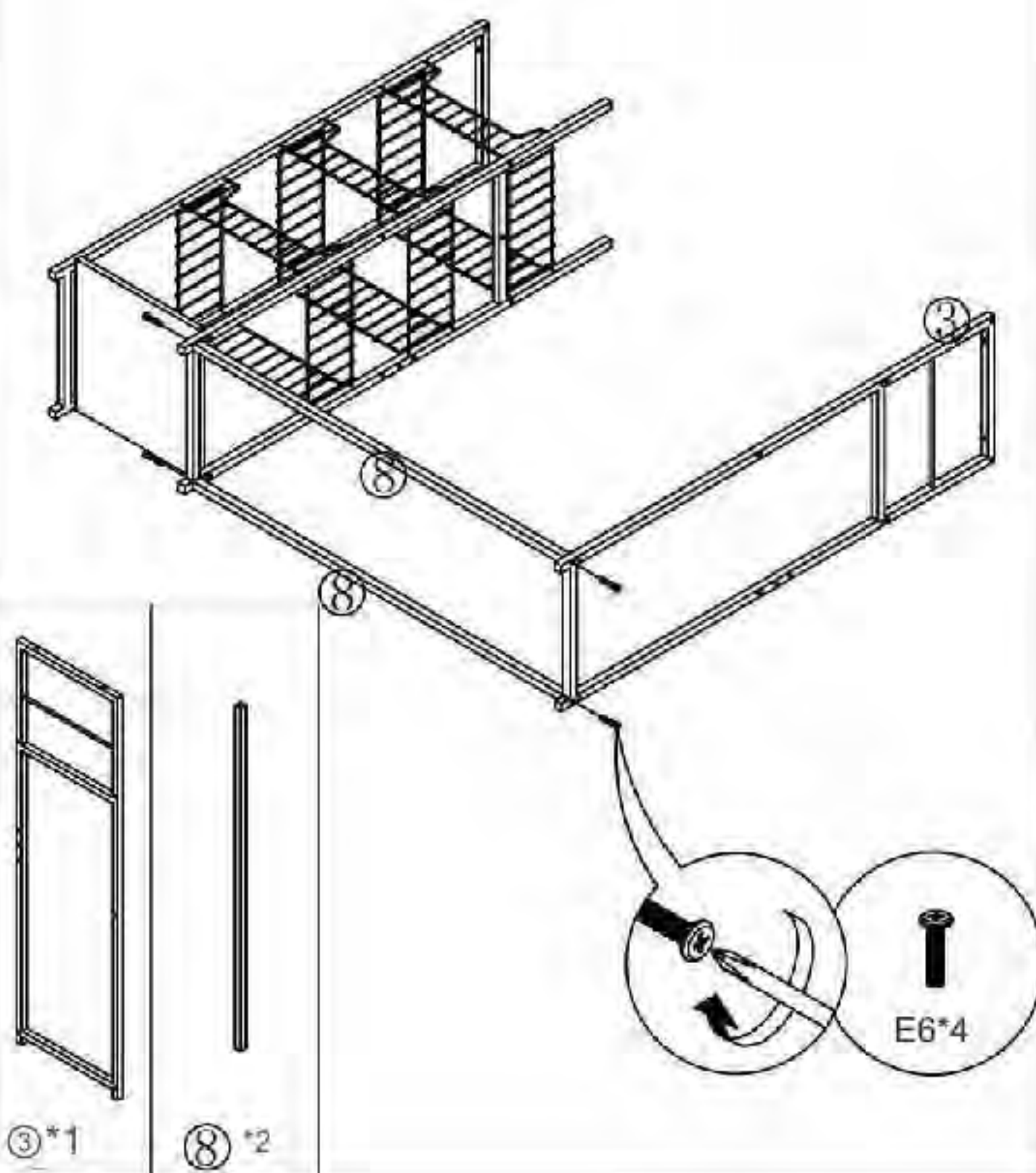
Step 3



Insert the mesh into the holes in the left and right steel frames

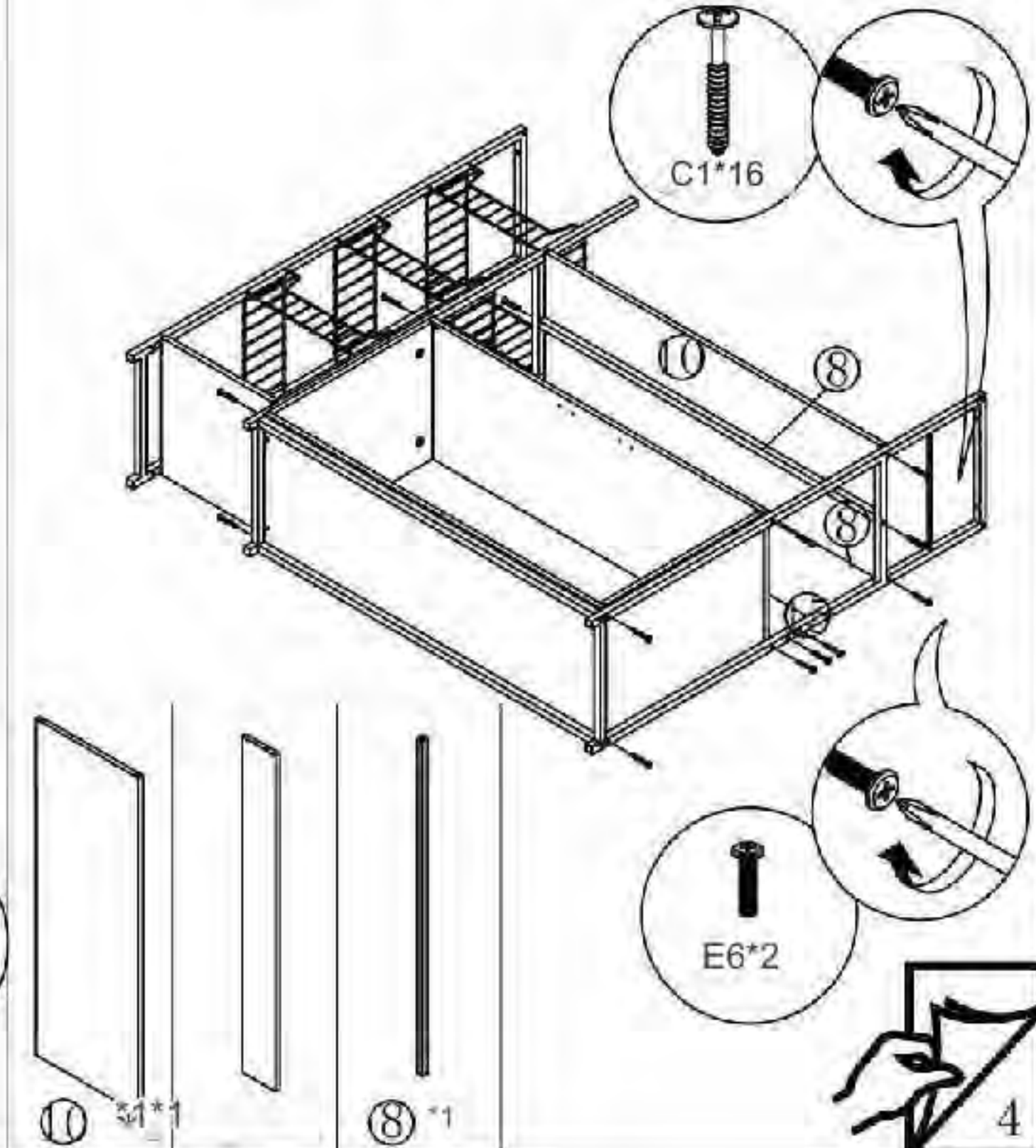


Step 4

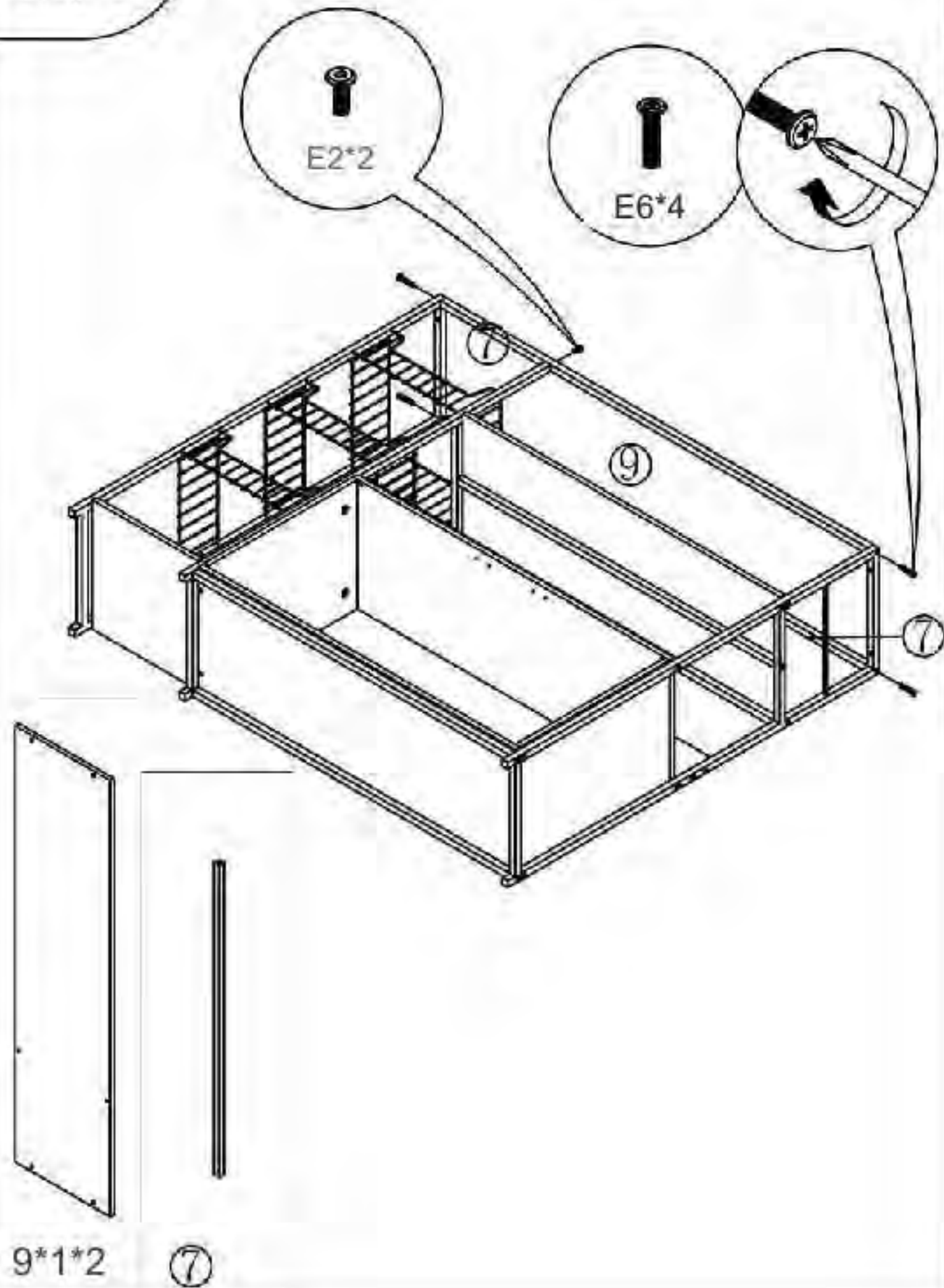


Step 5

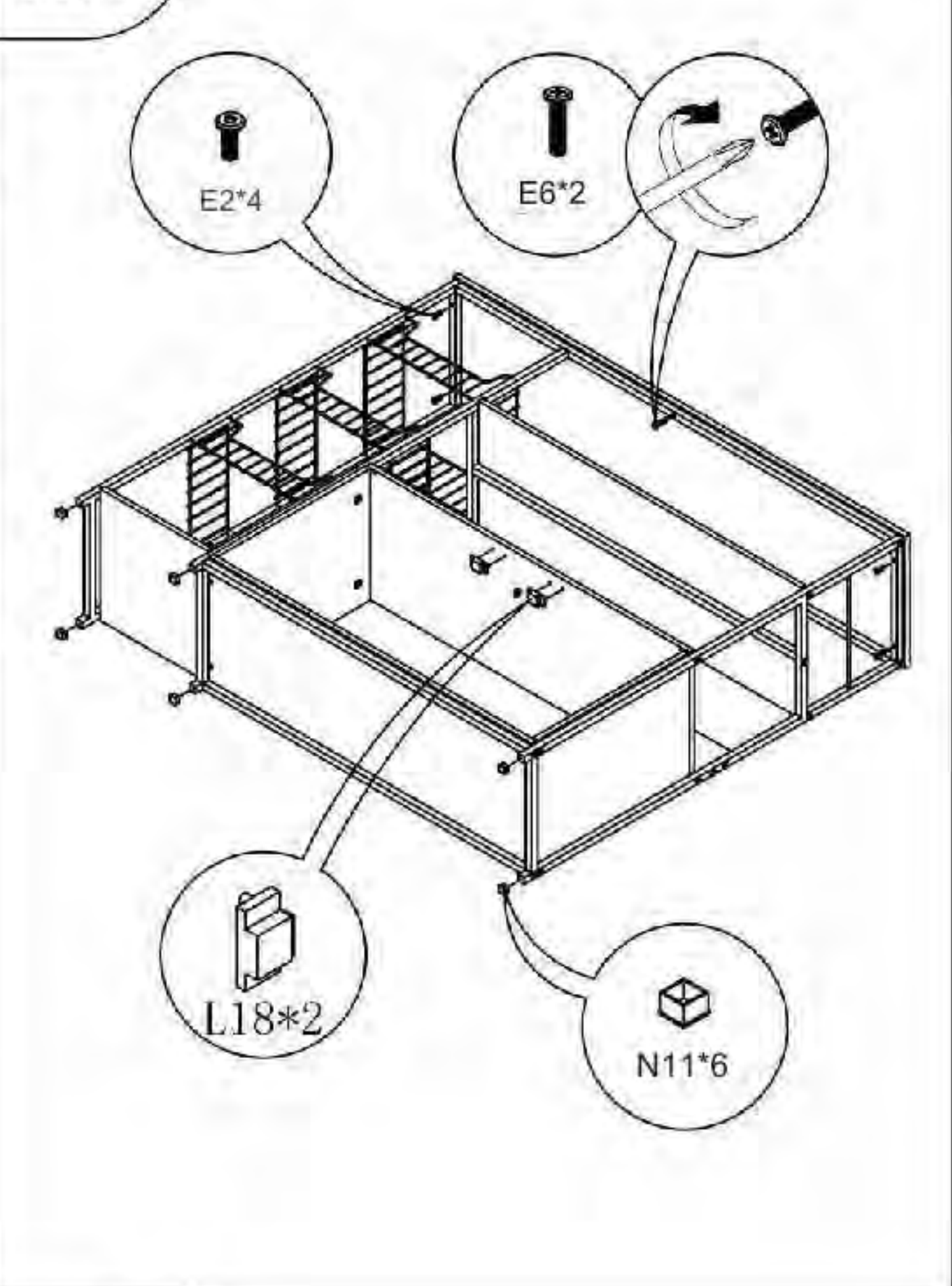
First insert the cabinet installed in step 2, and then install other panels



Step 6

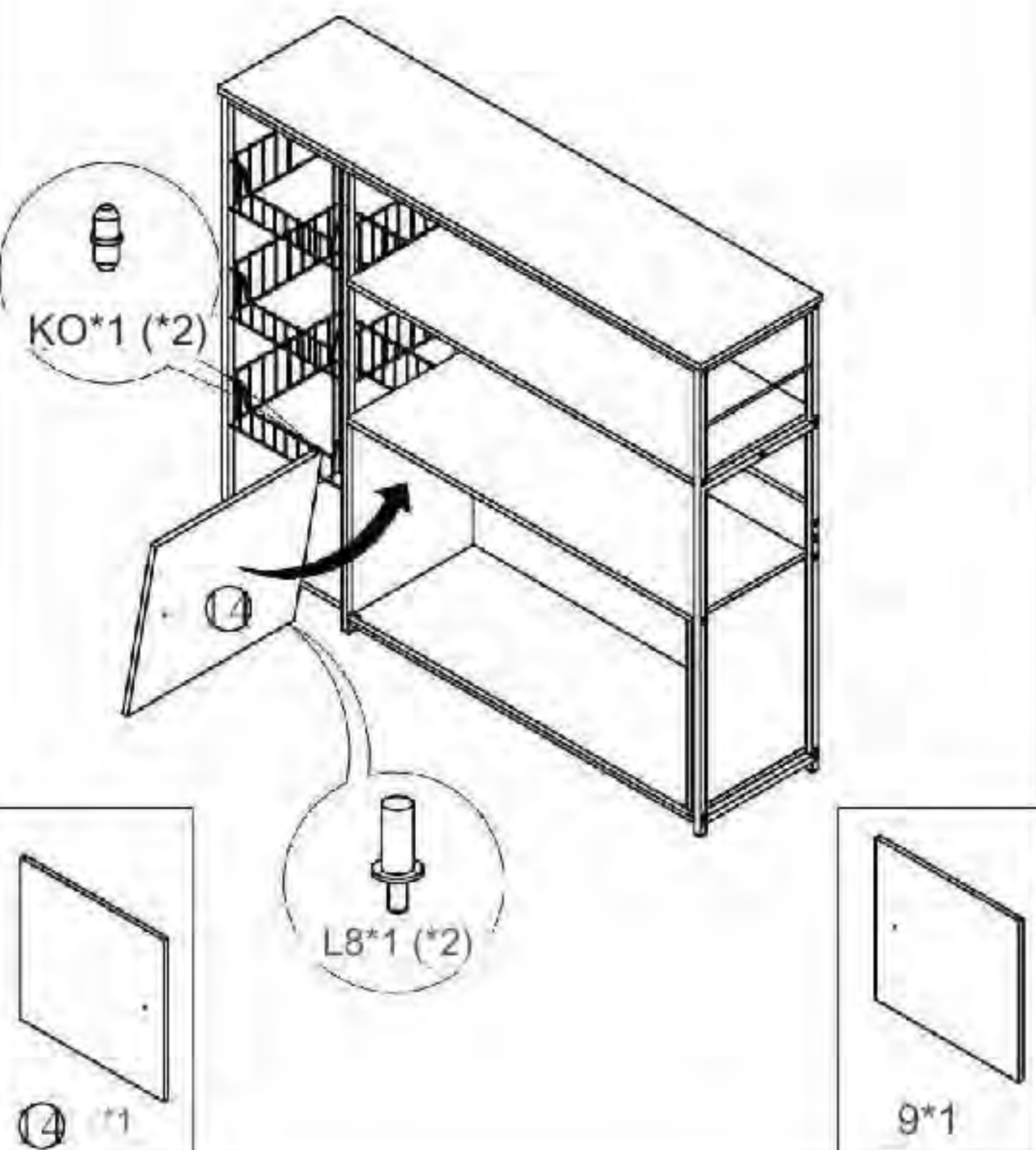


Step 7

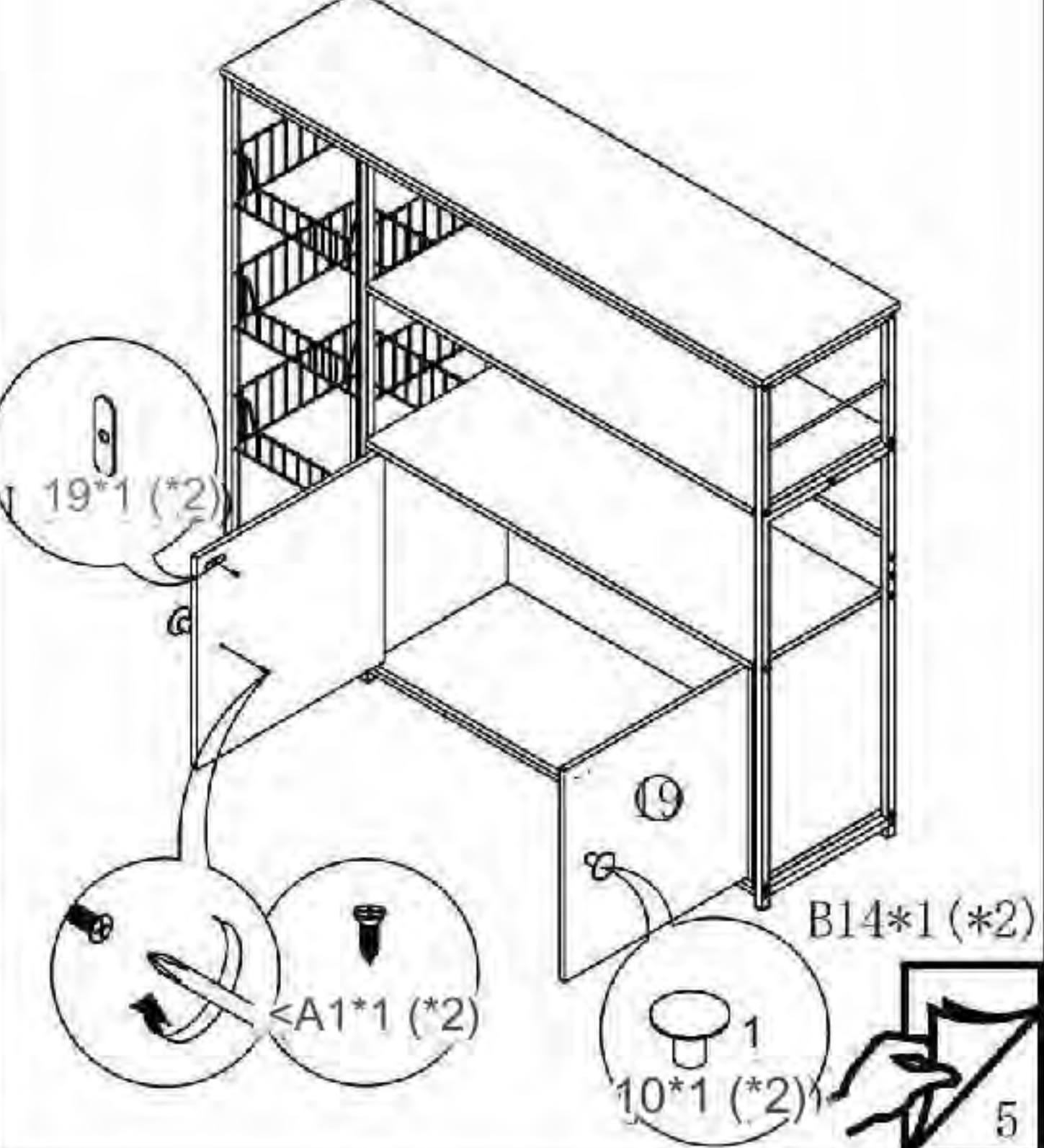


Step 8

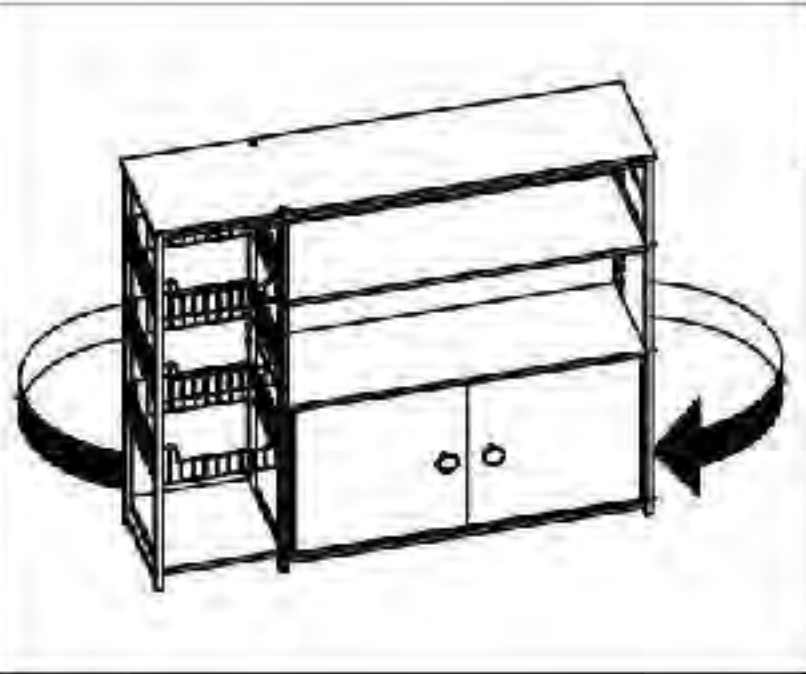
In the same way, another door panel can be installed.



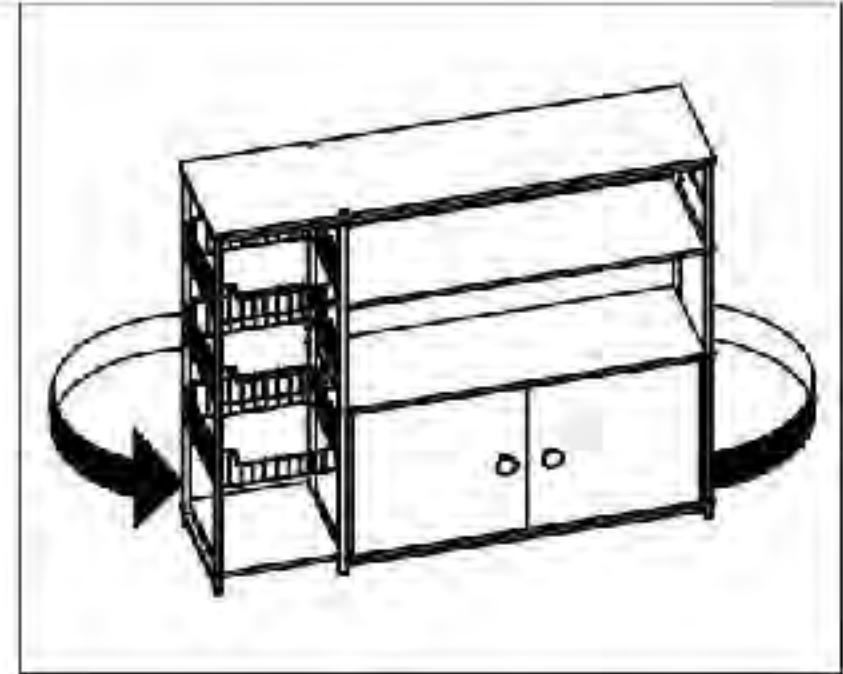
Step 9



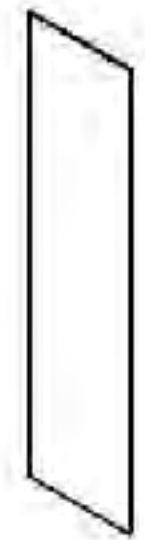
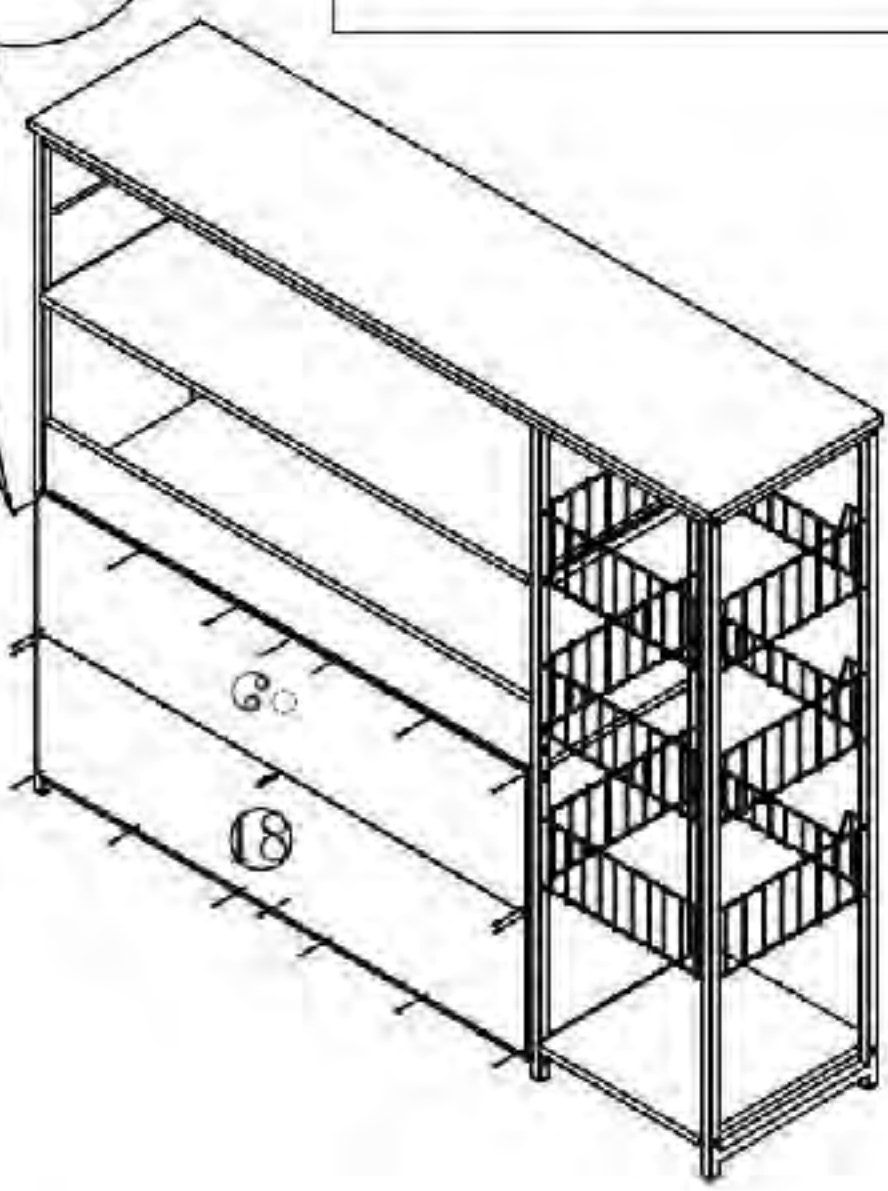
Step 10



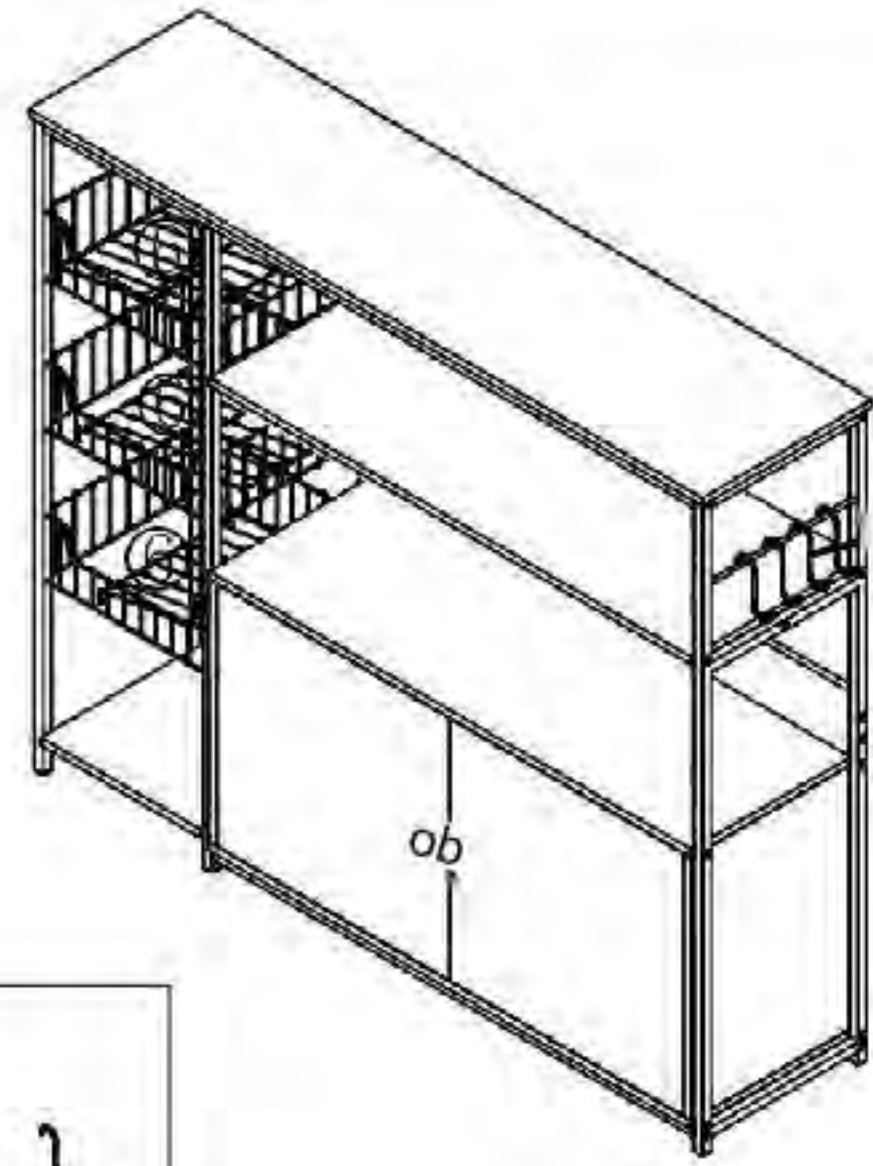
Step 11



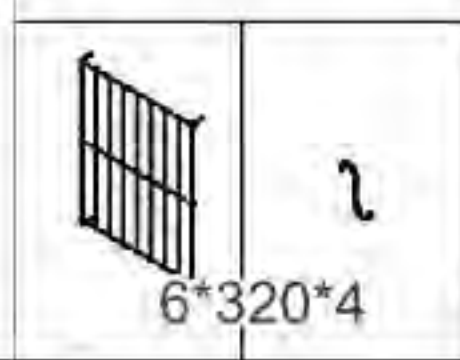
I  
K20\*20



18 \*2



20\*4



6\*320\*4

Step 12

