

SOCEO43 Installation Instruction

Please be sure to use a manual screwdriver and refrain from using an electric drill.

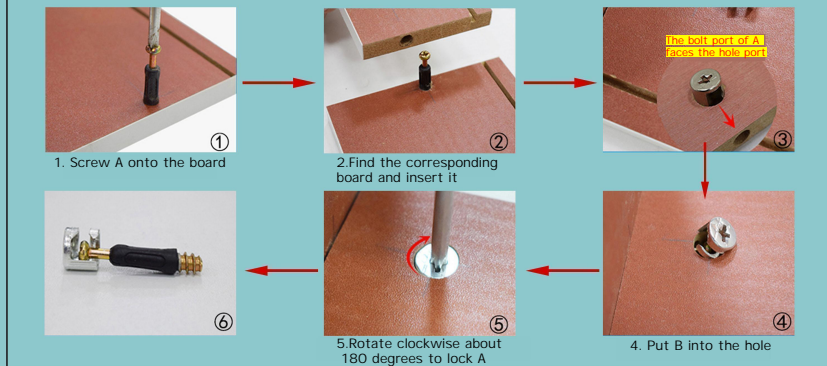


Accessories :

						H*6
A*6	B*4	C*12	D*8	E*2	F*1	G*1

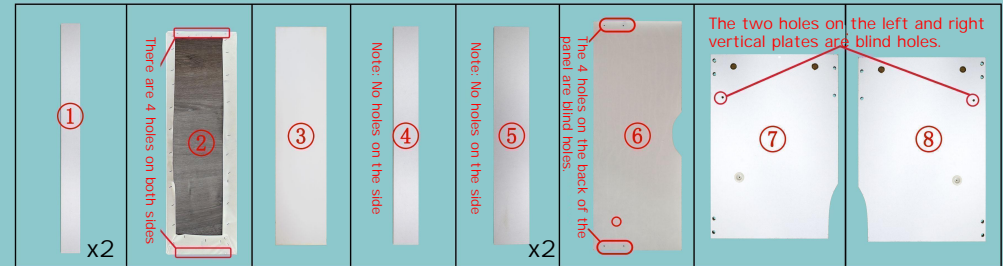
- Kind tips:**
- 1.Before installing, distinguish the panels according to the installation instructions
 - 2.When installing, tighten the screws to 70% tight first, and then tighten them after all alignment is completed
 - 3.Some boards have a red side, the red side faces down or inwards
 - 4.The color is subject to the actual product, and the instructions are for reference only

Installation Steps of Accessory A



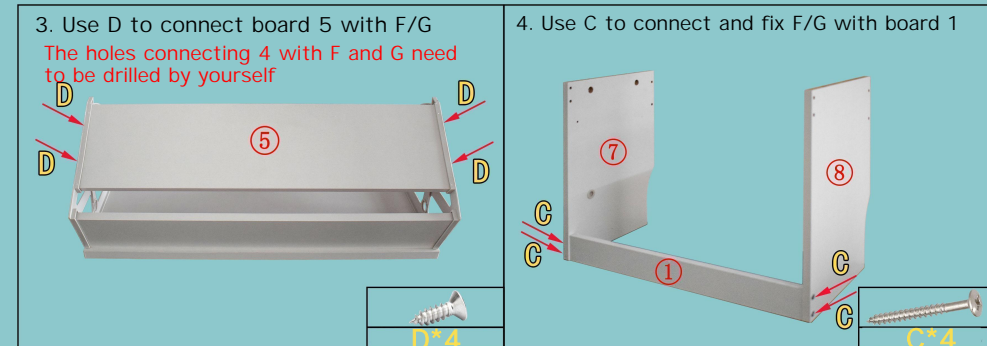
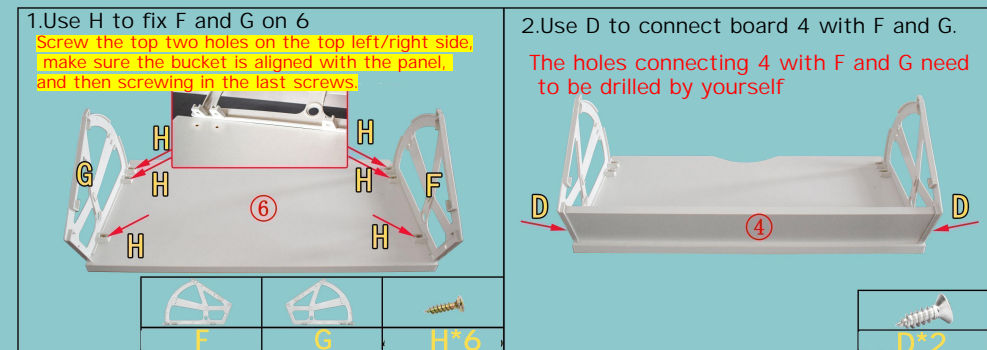
(1)

Boards :



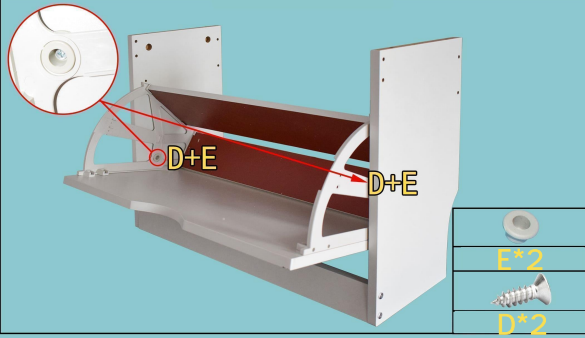
Before installing, please distinguish the boards according to the installation instructions and check whether there are annotations.

Installation steps:

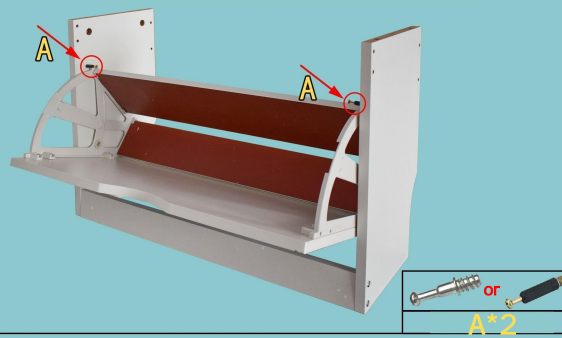


(2)

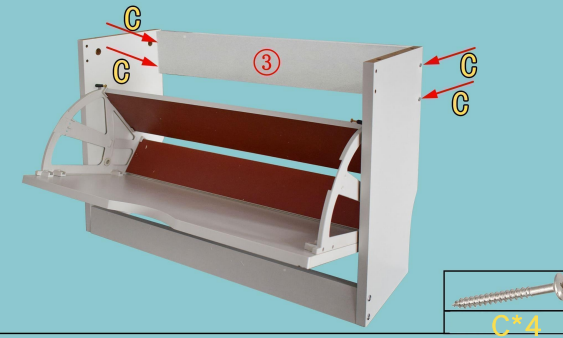
5. Use D and E to install the installed components between F and G.



6. Insert an A on each of F and G



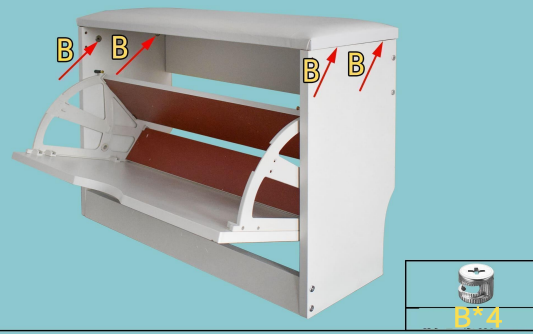
7. Use C to connect and fix F/G with board 3



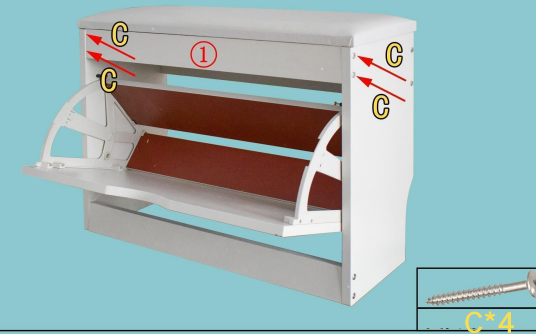
8. Screw A on the back of the board 2.



9. Insert A (on the board 2) into the holes of F/G and secure them with B.



10. Use C to connect and fix F/G with board 1



11. Insert board 5 into the cabinet



Installation Completed