

CC020 Installation Instruction

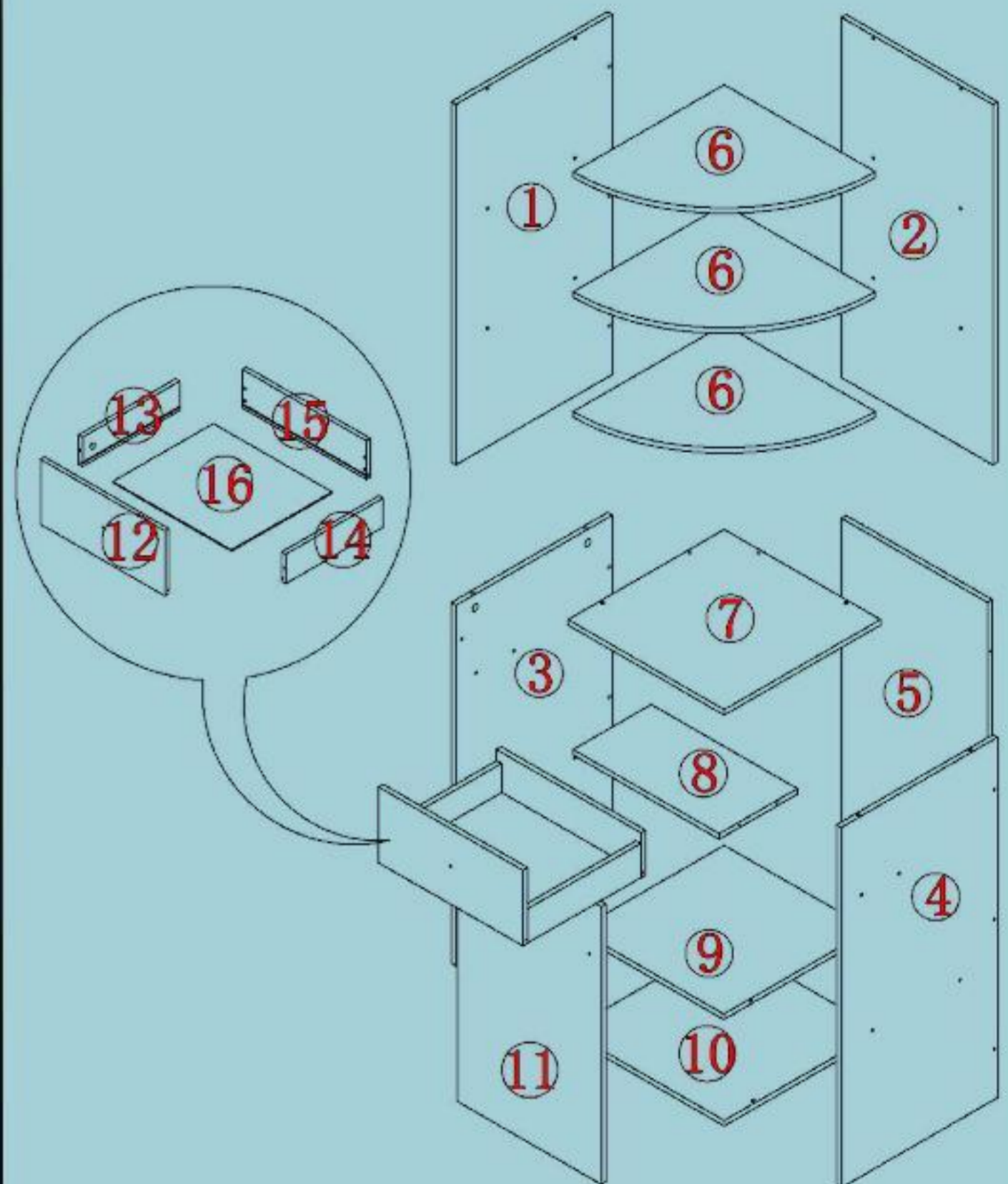
Please be sure to use a manual screwdriver and refrain from using an electric drill.



Finished product display



Panel split view



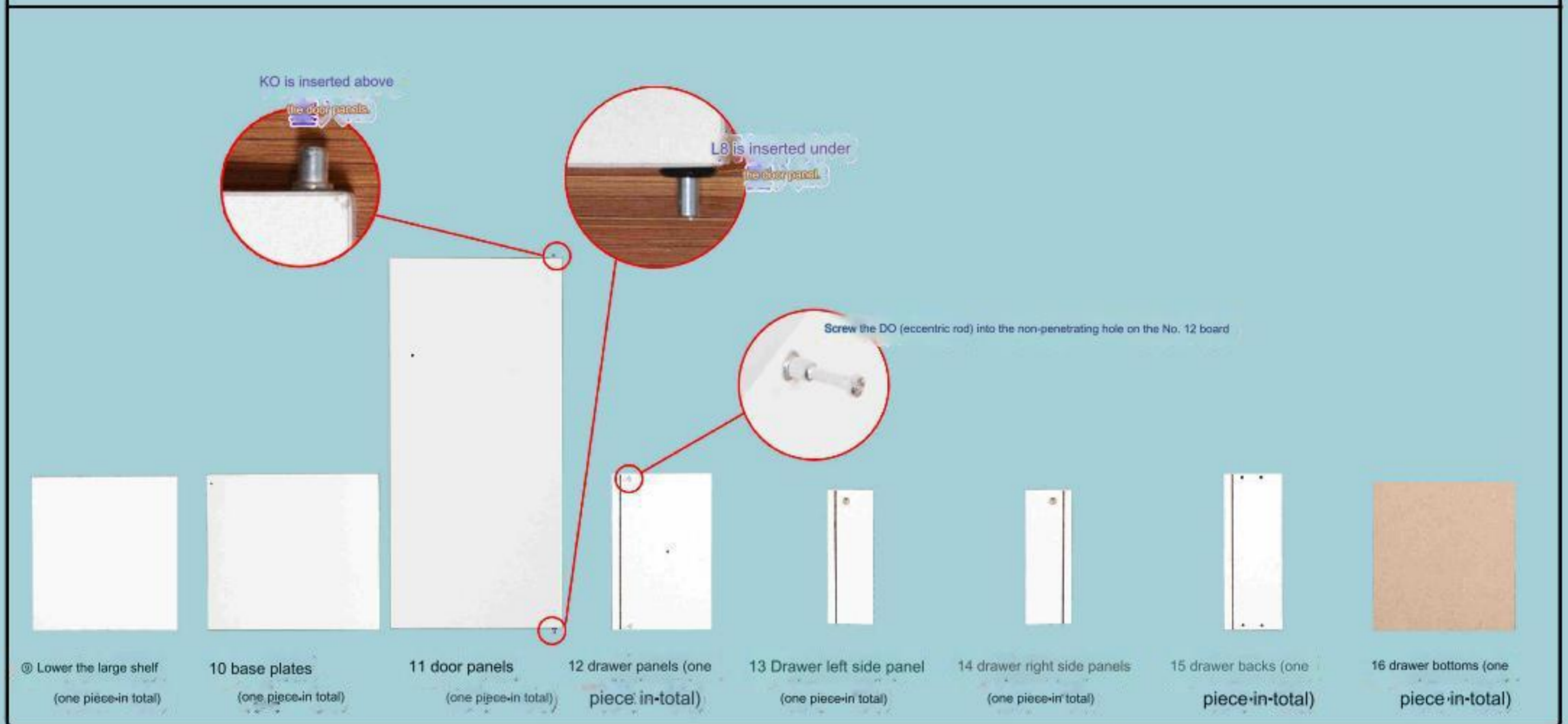
Product accessories and quantity:

| | | | | | | | |
|---------------------------------|----------------|---------------------|-------------|-------------------|---------------------|-------------------|-------------|
| | | | | | | | |
| Eccentric wheel + eccentric rod | iron shelf pin | 5*40 pointed screws | small nails | Spring spacer pin | Xiaobai holds hands | 4*16 handle screw | screwdriver |
| D0 × 11 | K0 × 5 | C1 × 33 | K20 × 12 | L8 × 1 | J0 × 2 | B8 × 3 | 1 |

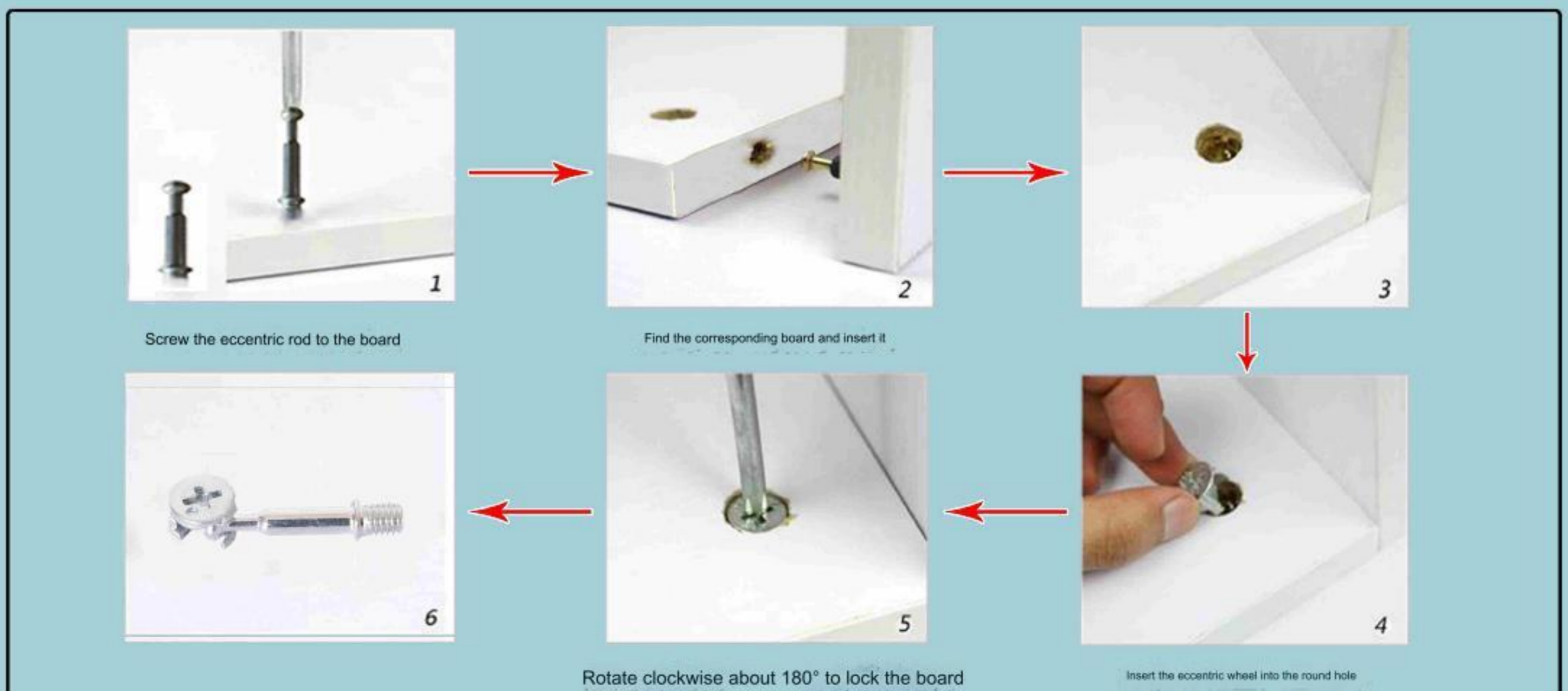
Kind tips:

1. Please distinguish the boards according to the drawings when installing.
2. Tighten the screws 70%, and then tighten them again after everything is completed!
3. Some boards have a red side, and the red side faces down or inward.
4. Please refer to the actual product for color. The contents shown in the manual are for reference only.

Product name and serial number:



Installation principle of eccentric parts:



Start the installation; Step 1: Install the drawer part as follows:

<1>

①② Drawer panel

①③ Drawer left side panel 14 drawer right side panel

Insert DO (eccentric wheel)

Eccentric wheel + eccentric rod
D0x2

<2>

1. Insert the No. 16 plate first.
2. Then rotate the DO (eccentric wheel) clockwise to lock the plate.

①⑥ Drawer bottom

<3>

15 Drawer back panel

5*40 pointed screws
C1x4

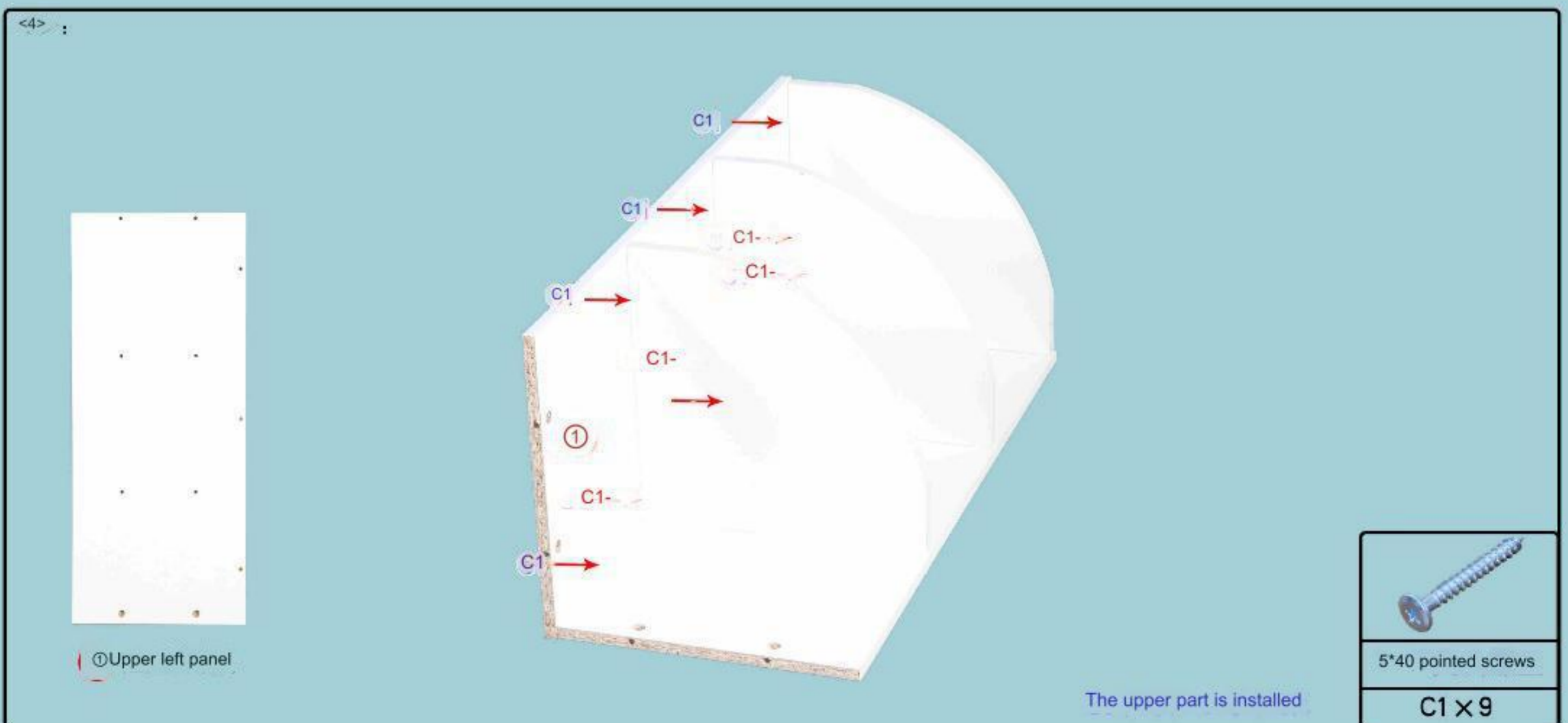
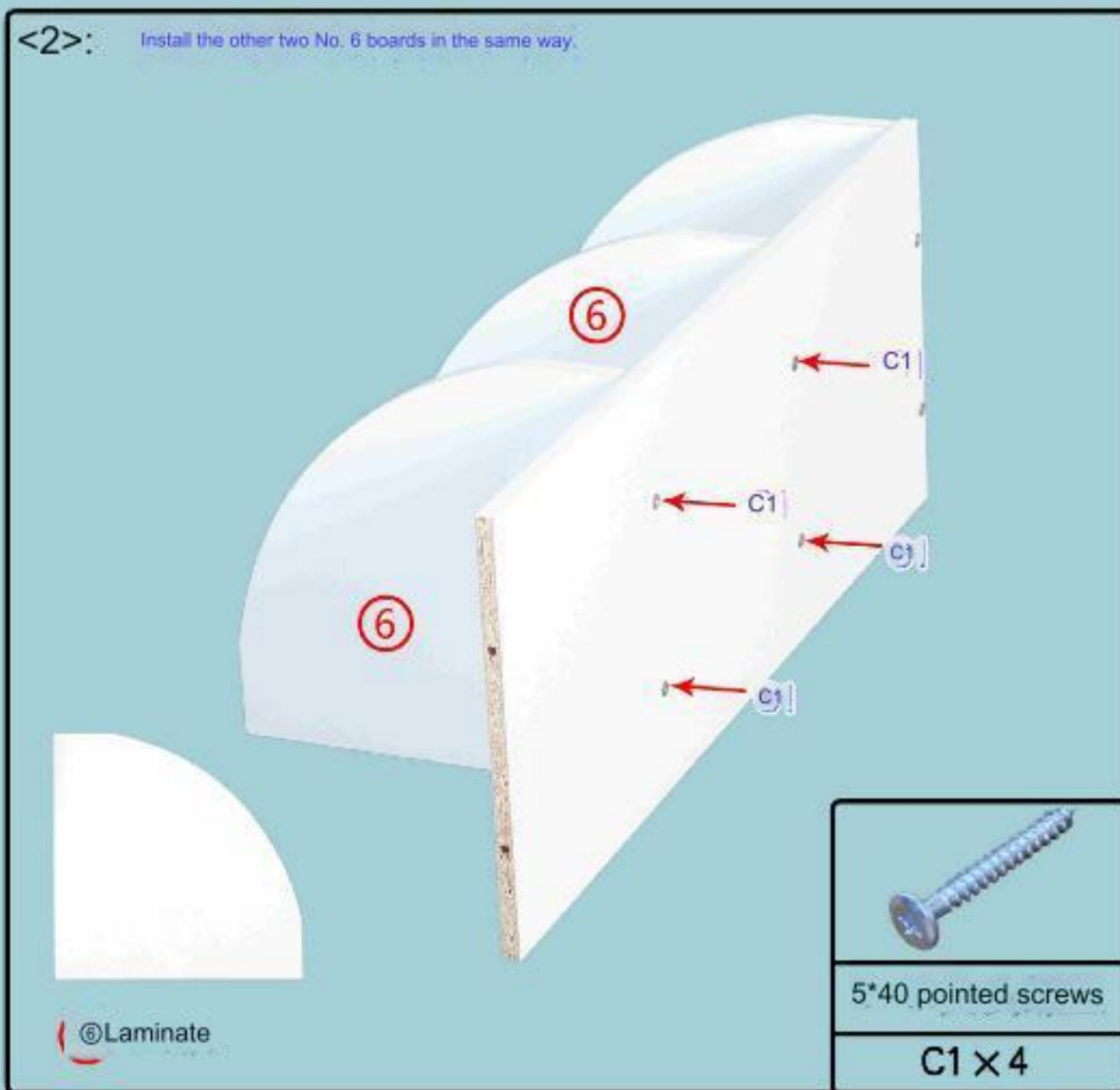
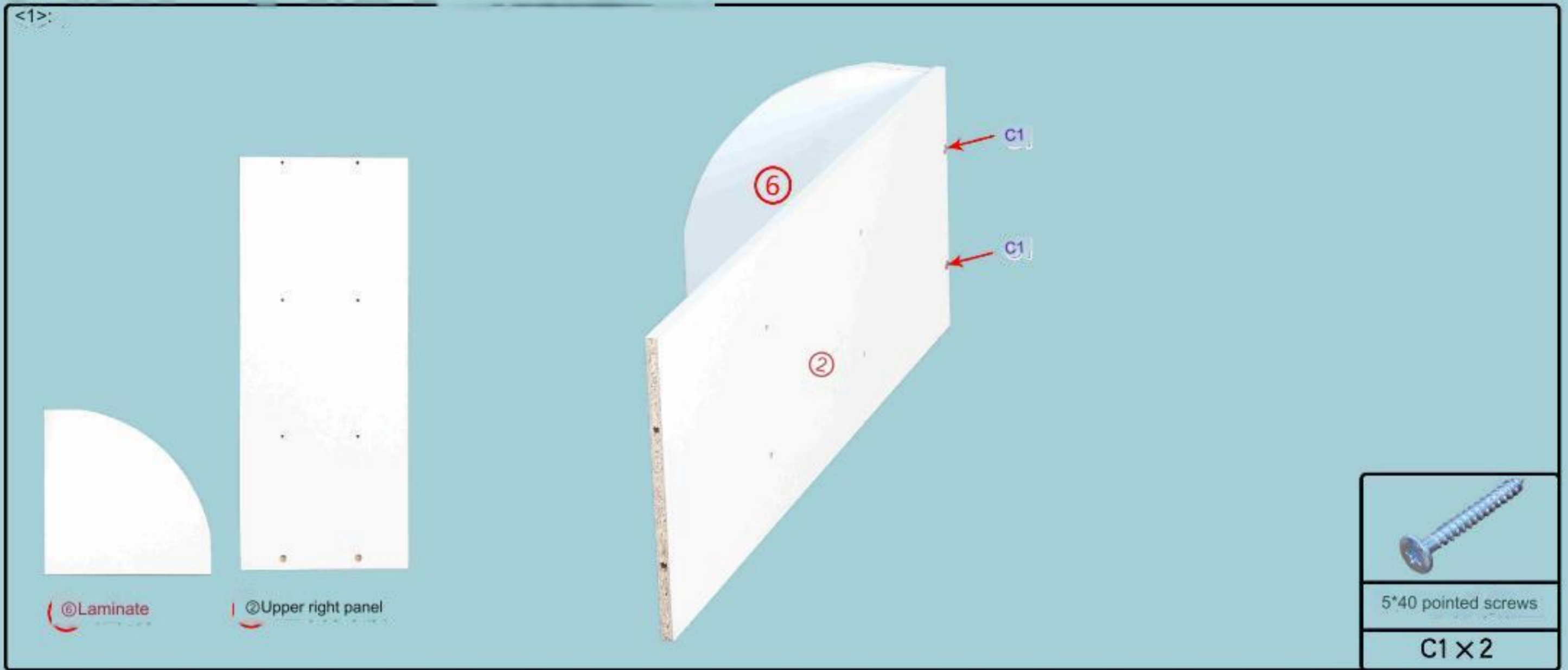
<4>

B8

JO

4*16 handle screw Spring spacer pin
B8x1 J0x1

Step 2: Install the lower part as follows:



Step 3: Install the upper part as follows:

<1>

The non-penetrating holes circled on boards 3 and 4 are on top

Circle the small hole on the No. 10 plate.

③ Lower left panel ④ Lower right panel 10 base plate

5*40, pointed screws
C1 x 4

<2>

The small hole on the side of No. 9 board to the side with the shorter distance is on top

The distance from the small hole on the side of No. 9 board to the two sides is different.

⑨ Lower the large shelf

5*40 pointed screws
C1 x 4

<3>

The non-penetrating hole on No. 8 is up and facing forward.

⑧ Lower board

5*40 pointed screws
C1 x 4

<4>

(5)

<5>

You can choose the direction of installing the DO (eccentric rod) on the No. 7 plate

Ⓞ Connection plate

Eccentric wheel + eccentric rod

D0x4

<6>: Lower it forward as follows

<7>

Knock in the K20 with a tool hammer
(You need to bring your own tool hammer)

Ⓞ Pull plate The lower part is installed

Small nails

K20 x 10

Step 4: The overall installation is as follows:

<1>

Arrange the upper and lower parts and assemble them

Upper part

DO DO DO

the second half

Eccentric wheel + eccentric rod

rod D0 x 4

<4>

1. Align the KO above board No. 11
Insert into the small hole at the bottom of No. 8 board

Non-penetrating hole on No. 4 board [Plug in KO, plug in Ko to block the door

2. Press and hold L8 under No. 11 board and push it until it is inside the small hole of No. 10 board.

11 door panels

| | |
|-------------------|-------------------|
| | |
| Spring spacer pin | Spring spacer pin |
| J0x1 | L8X1 |
| | |
| 4x16 handle screw | iron shelf pin |
| B8x1 | K0x2 |

<5>

The function of inserting KO KO is to prevent the drawer from falling out when it is pulled out.

Drawer part

| |
|----------------|
| |
| iron shelf pin |
| K0x2 |

<6>

The installation is complete

<7>

The upper part can be installed in different directions