

SOCE017 80&100cm Installation Instruction

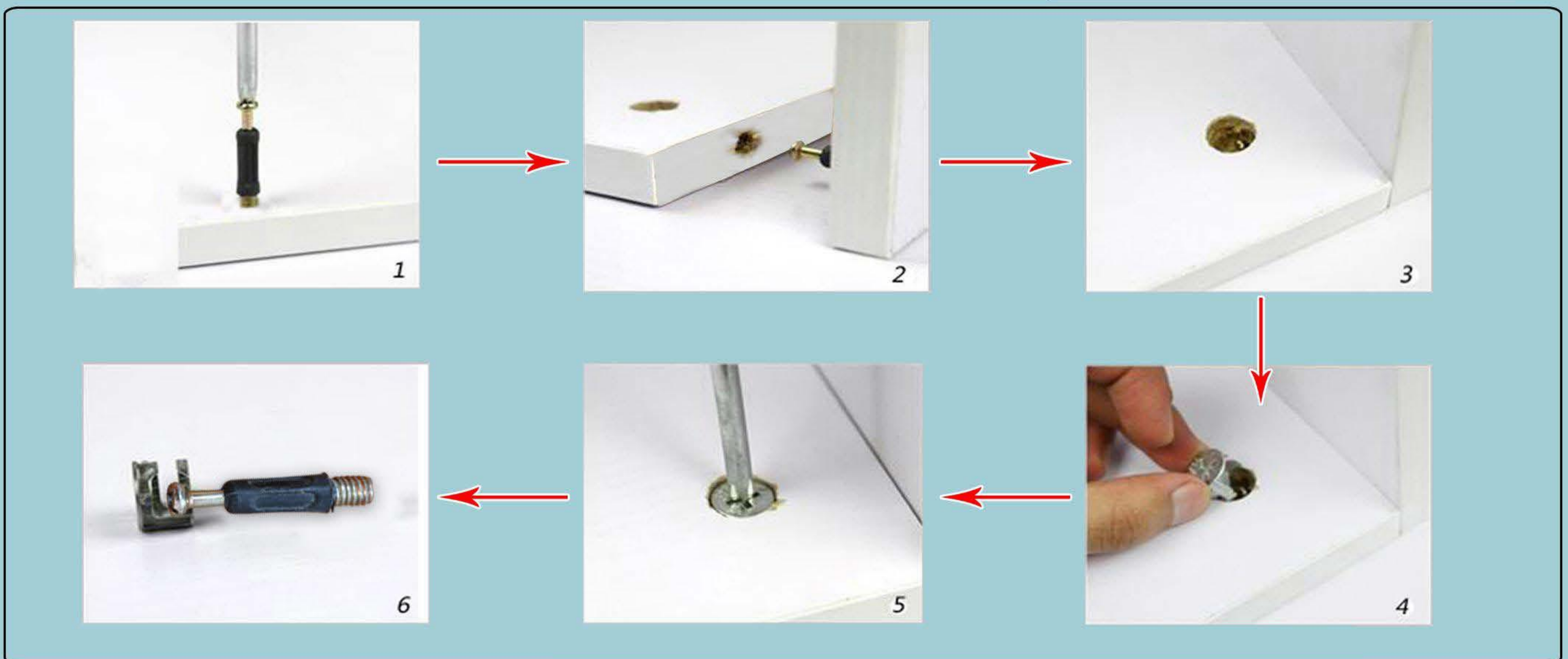
								
Eccentric screw	Eccentric Bolt	3.5CM self-tapping screw	metal pin	spring pin	Smallest self-tapping screw	air hole	small nail	3CM flat head screw
A*6	B*6	C*35	D*13	E*3	F*11	G*1	H*30	I*4

Reminder: When installing, tighten the screw seven times,

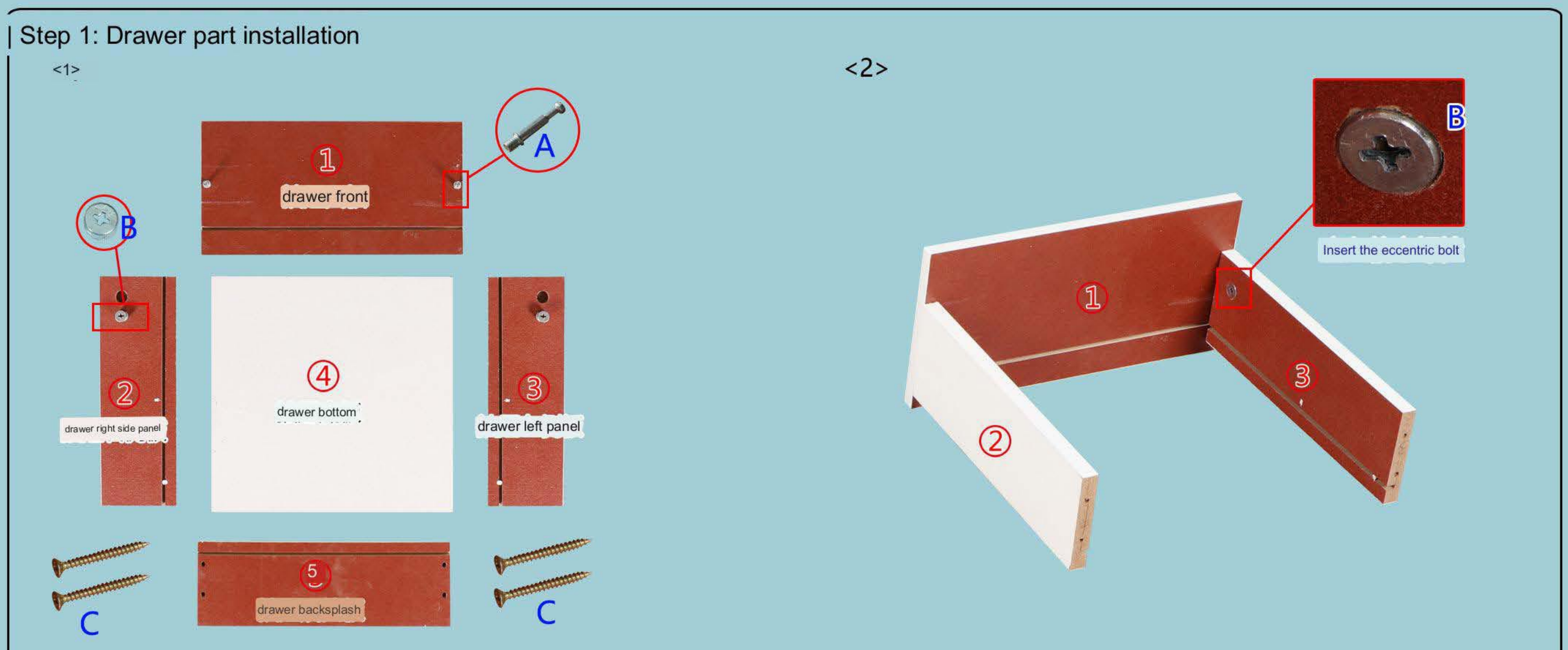
Tighten it when you're all done!

Eccentric installation principle:

		
double bouncer	rebounder	Iron sheets
J*1	K*1	L*3



installation steps:

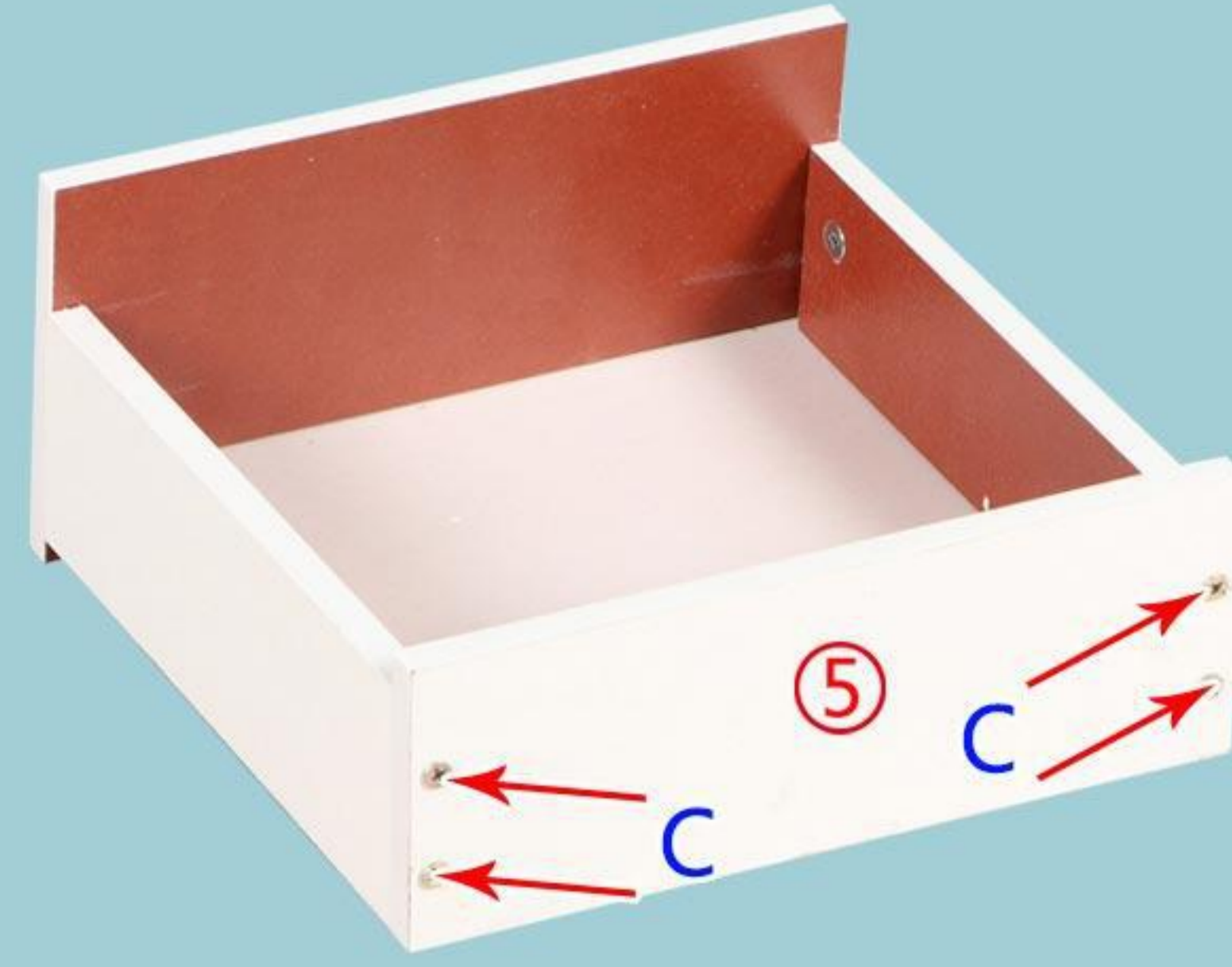


<3>



Insert the bottom plate of the drawer first, then turn the eccentric bolt clockwise to lock the plate

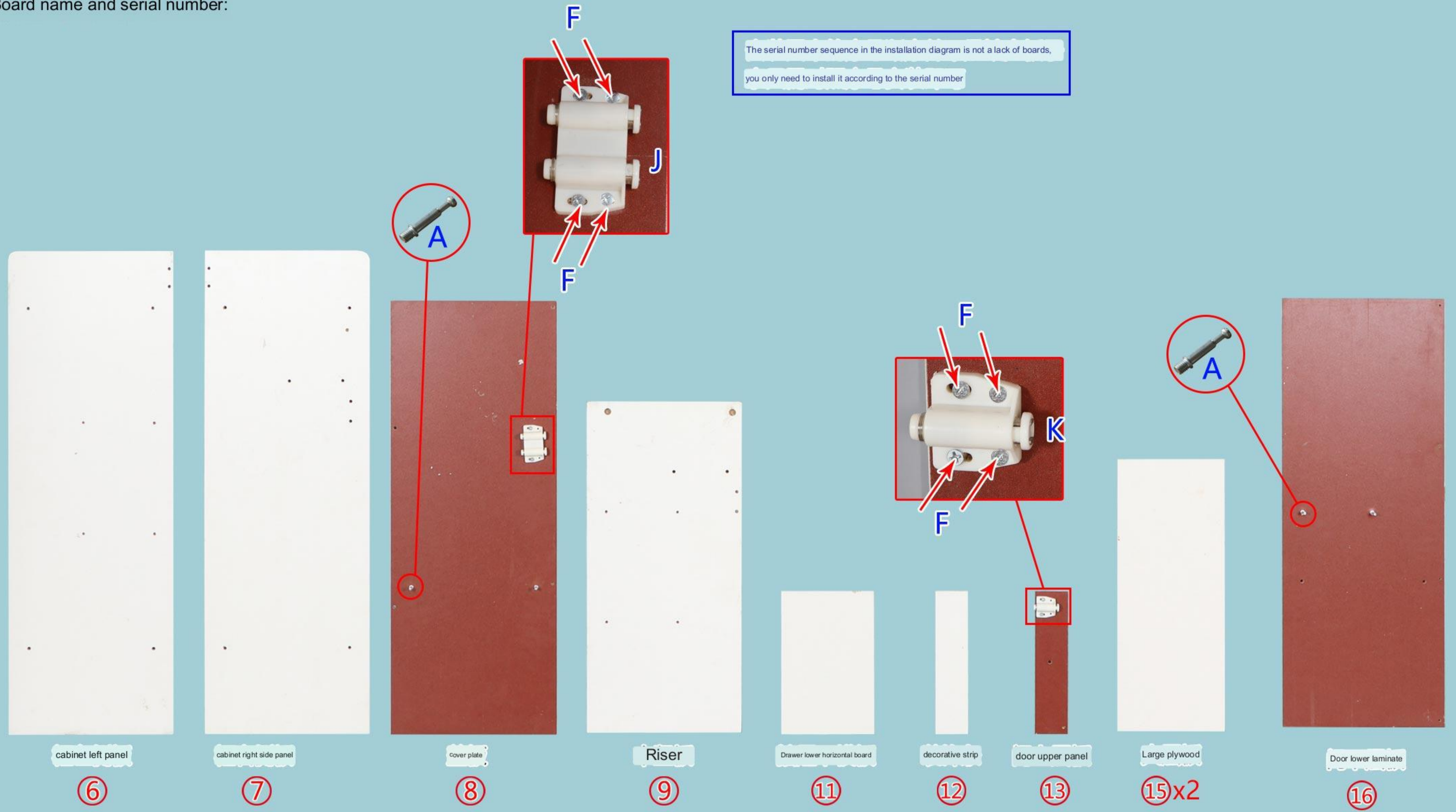
<4>



The drawer part is installed!

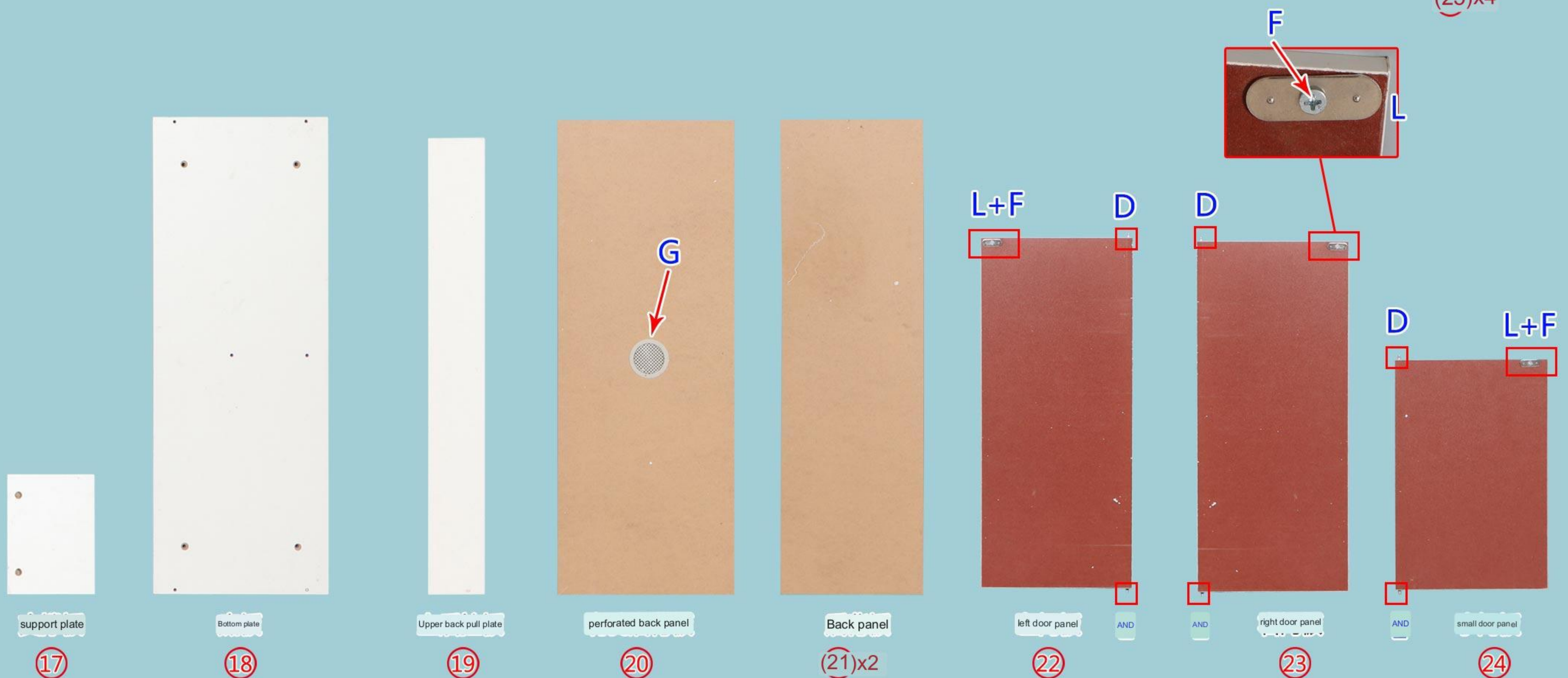
Board name and serial number:

The serial number sequence in the installation diagram is not a lack of boards, you only need to install it according to the serial number



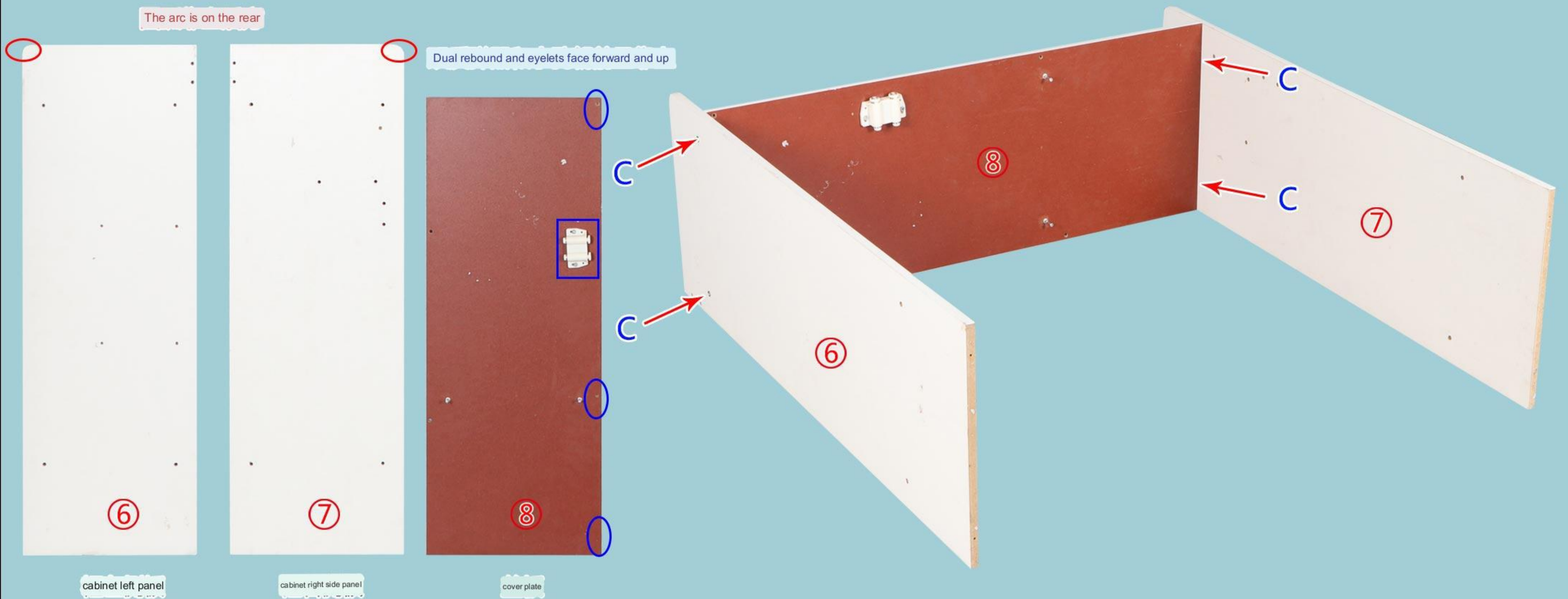
This model is a 80CM style with three doors and one drawer. If you buy a 100CM style with three doors and one drawer, there are 5 cabinet legs, and you can install it in the same way

cabinet legs
(25)x4

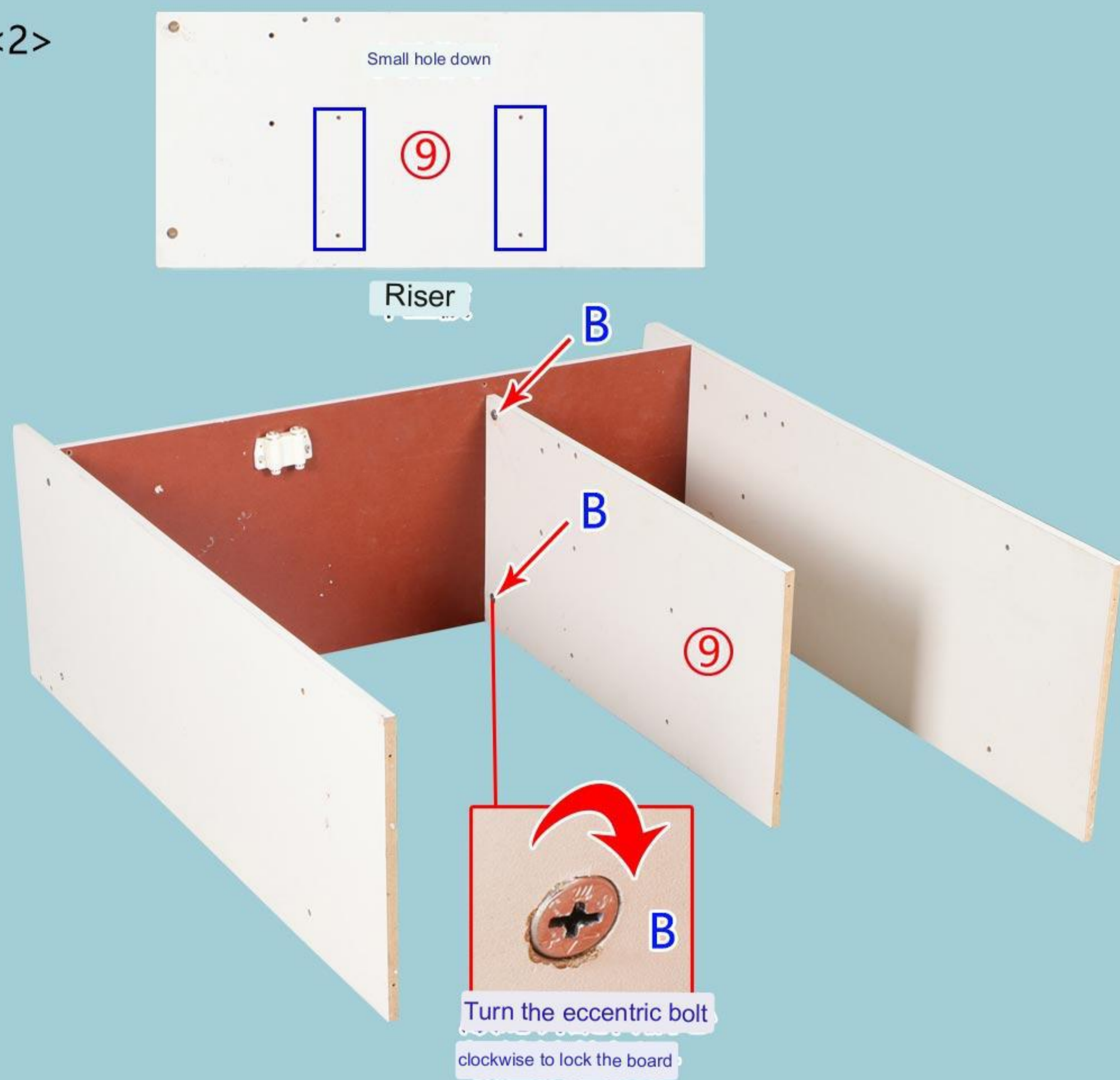


Step 2: Whole Parts Installation

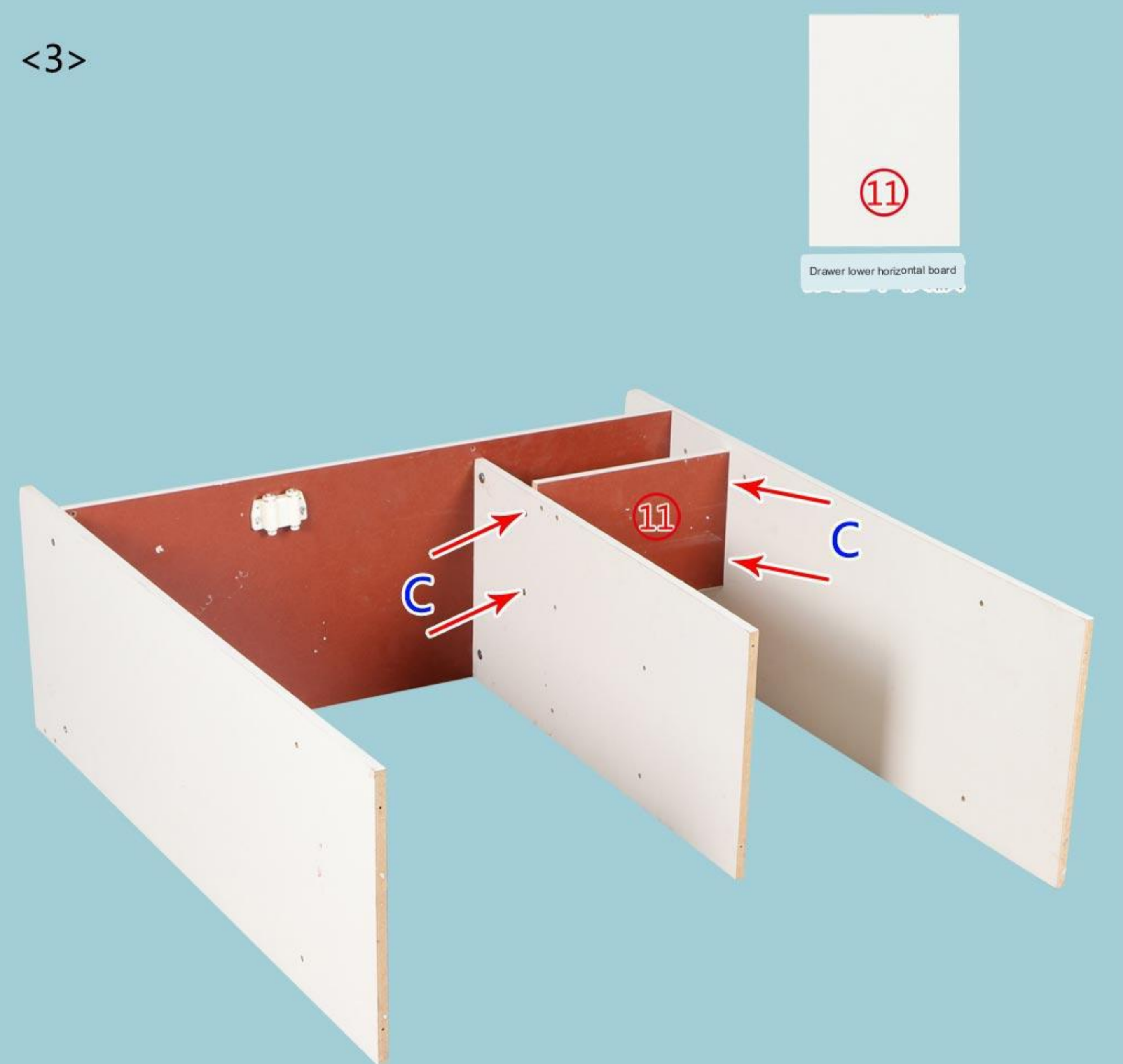
<1>



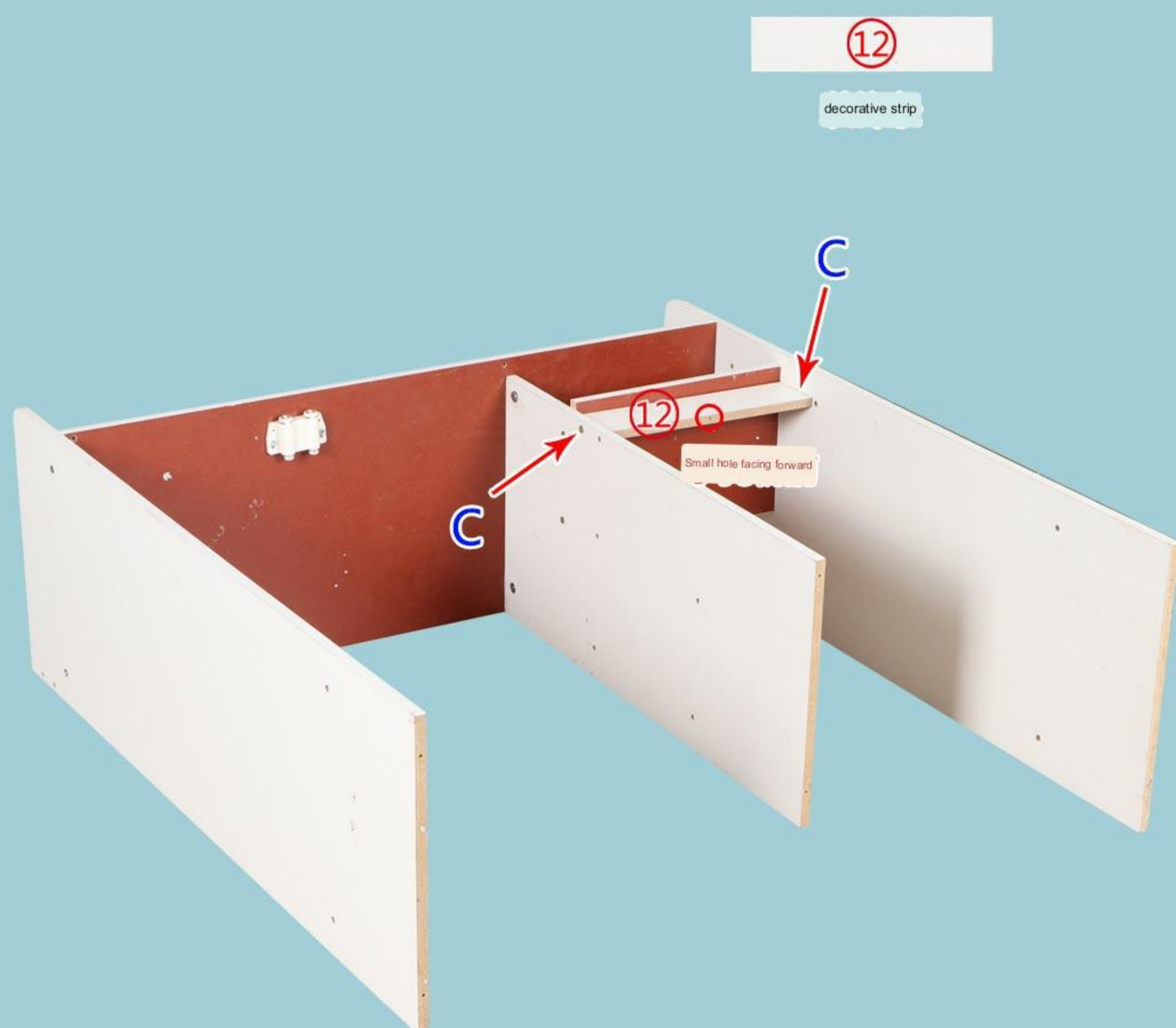
<2>



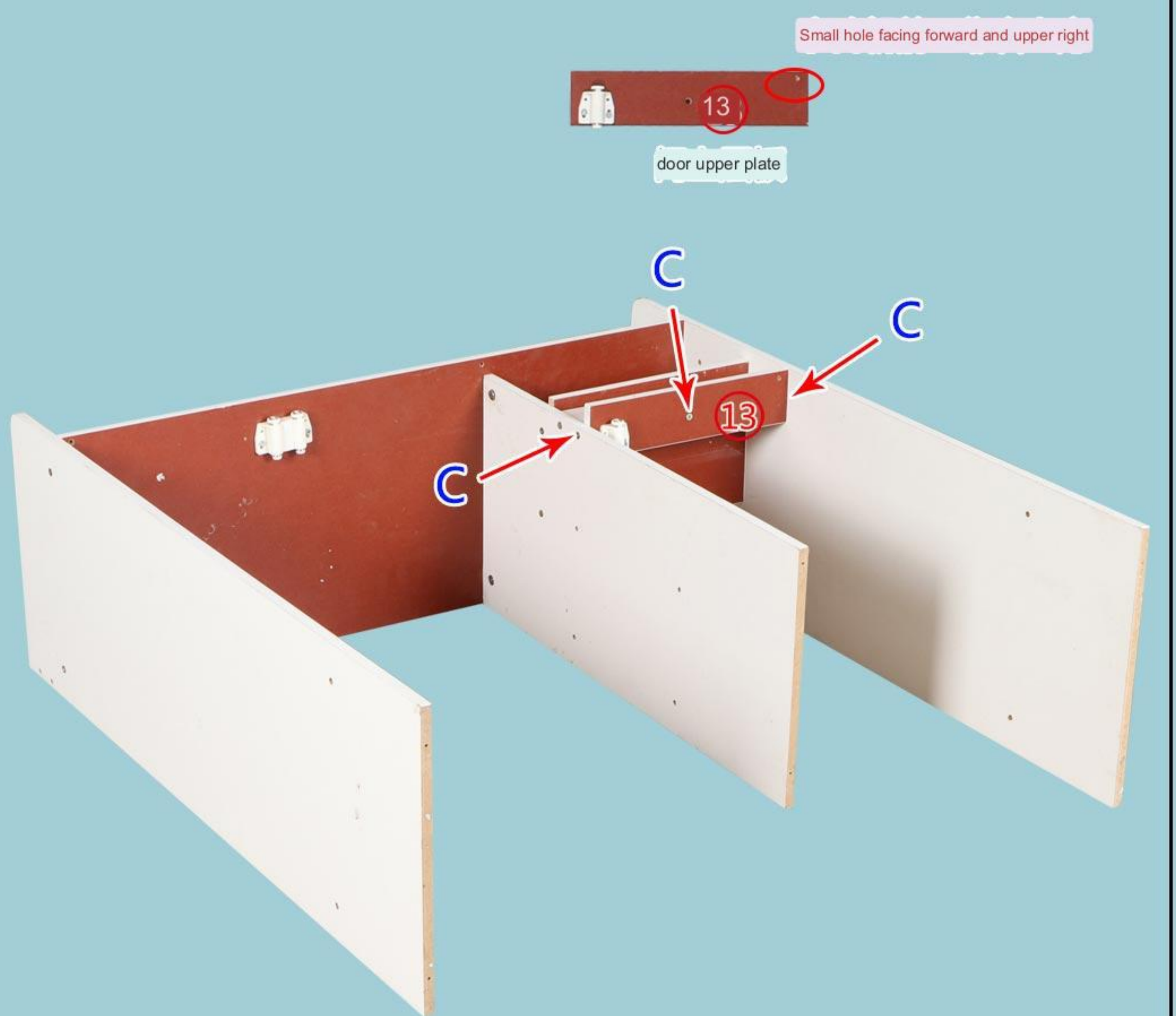
<3>



<4>



<5>



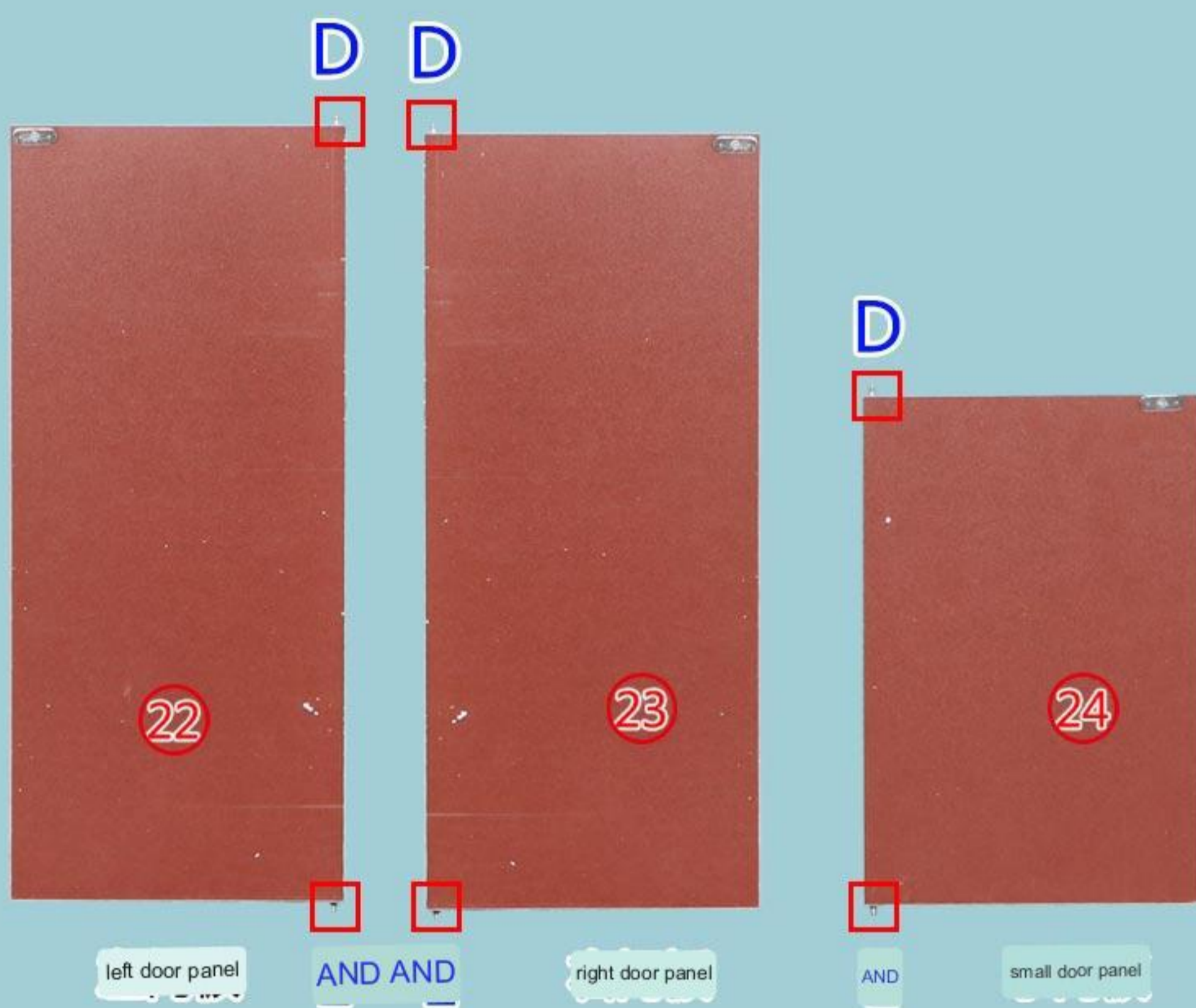
<12> The overall alignment, facing forward



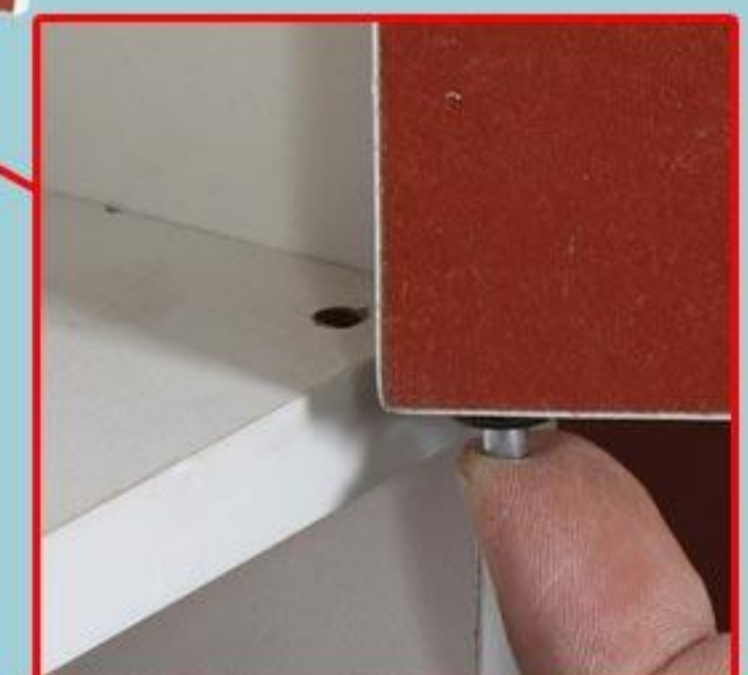
<13> Put in large laminates



<14>



1. Align the small hole at the bottom of the board and insert the metal pin on the door panel



2. Press and hold the spring pin and insert it into the small hole on the board

<15> Slowly push into the drawer

Method 1: Insert the metal pin after pushing in the drawer.

Method 2: After inserting the metal pin, push the drawer at an angle of 45 degrees.



Insert the metal pin. The role of the metal pin is to prevent the drawer from falling out when the drawer is pulled.

Complete drawing!